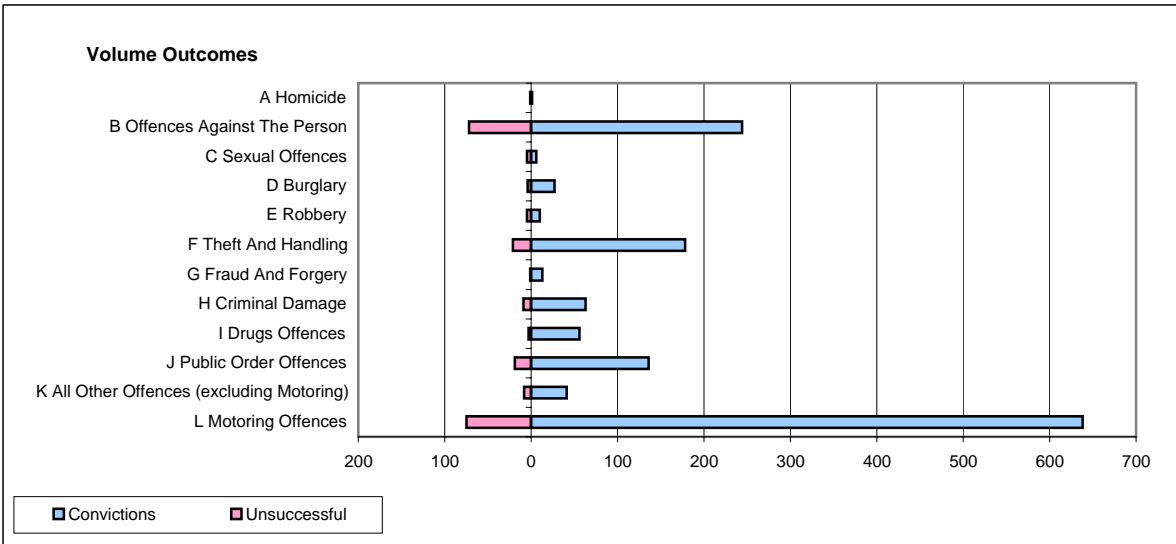
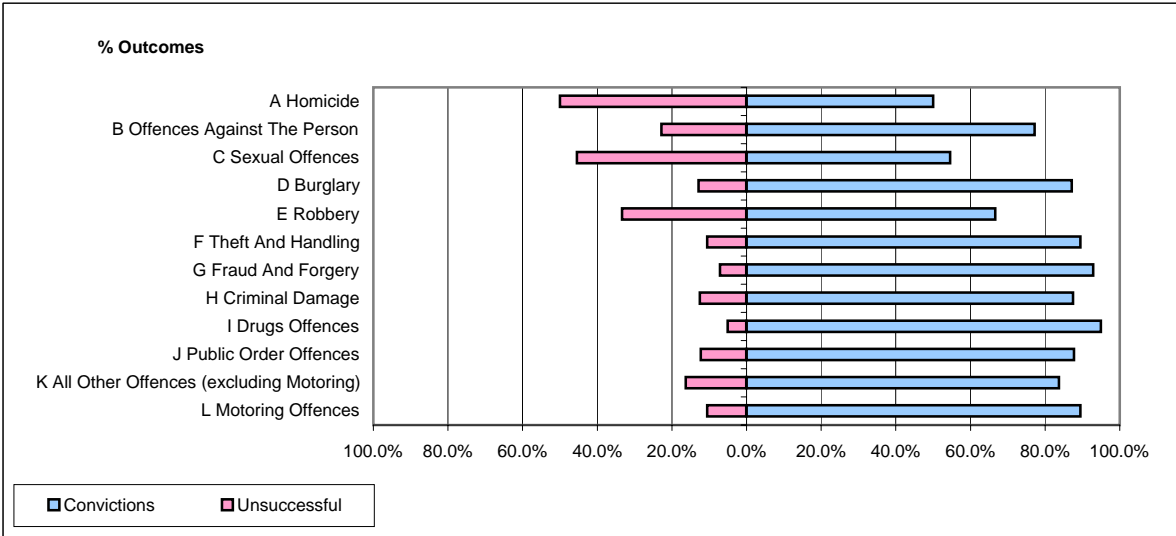


**CPS OUTCOMES BY PRINCIPAL OFFENCE CATEGORY**

**August 2007**

**P22-Leicestershire**



	Convictions		Unsuccessful	
	Number of Defendants	%	Number of Defendants	%
<b>A Homicide</b>	<b>1</b>	<b>50.0%</b>	<b>1</b>	<b>50.0%</b>
<b>B Offences Against The Person</b>	<b>244</b>	<b>77.2%</b>	<b>72</b>	<b>22.8%</b>
<b>C Sexual Offences</b>	<b>6</b>	<b>54.5%</b>	<b>5</b>	<b>45.5%</b>
<b>D Burglary</b>	<b>27</b>	<b>87.1%</b>	<b>4</b>	<b>12.9%</b>
<b>E Robbery</b>	<b>10</b>	<b>66.7%</b>	<b>5</b>	<b>33.3%</b>
<b>F Theft And Handling</b>	<b>178</b>	<b>89.4%</b>	<b>21</b>	<b>10.6%</b>
<b>G Fraud And Forgery</b>	<b>13</b>	<b>92.9%</b>	<b>1</b>	<b>7.1%</b>
<b>H Criminal Damage</b>	<b>63</b>	<b>87.5%</b>	<b>9</b>	<b>12.5%</b>
<b>I Drugs Offences</b>	<b>56</b>	<b>94.9%</b>	<b>3</b>	<b>5.1%</b>
<b>J Public Order Offences</b>	<b>136</b>	<b>87.7%</b>	<b>19</b>	<b>12.3%</b>
<b>K All Other Offences (excluding Motoring)</b>	<b>41</b>	<b>83.7%</b>	<b>8</b>	<b>16.3%</b>
<b>L Motoring Offences</b>	<b>638</b>	<b>89.5%</b>	<b>75</b>	<b>10.5%</b>
<b>Admin Finalisations</b>	<b>0</b>	<b>0.0%</b>	<b>24</b>	<b>100.0%</b>
<b>TOTAL</b>	<b>1,413</b>	<b>85.1%</b>	<b>247</b>	<b>14.9%</b>