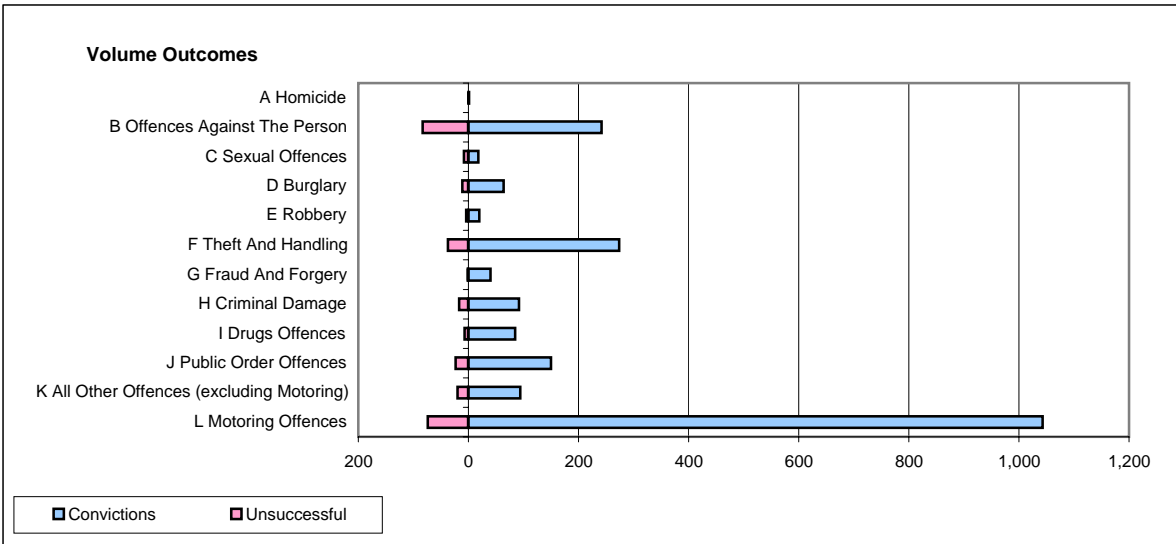
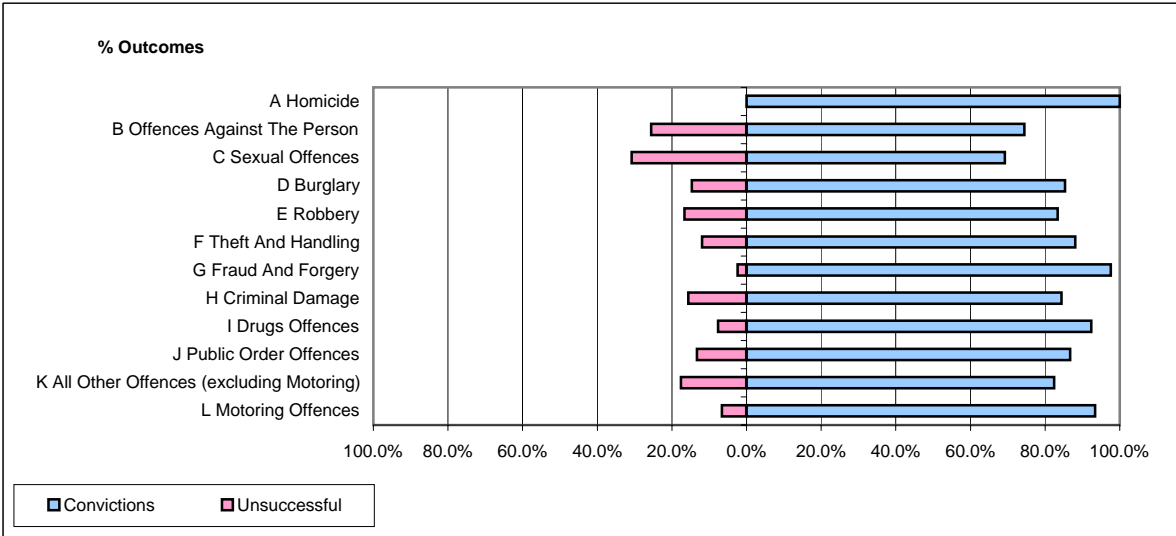


CPS OUTCOMES BY PRINCIPAL OFFENCE CATEGORY

August 2007

P20-Kent



	Convictions		Unsuccessful	
	Number of Defendants	%	Number of Defendants	%
A Homicide	1	100.0%	0	0.0%
B Offences Against The Person	242	74.5%	83	25.5%
C Sexual Offences	18	69.2%	8	30.8%
D Burglary	64	85.3%	11	14.7%
E Robbery	20	83.3%	4	16.7%
F Theft And Handling	274	88.1%	37	11.9%
G Fraud And Forgery	40	97.6%	1	2.4%
H Criminal Damage	92	84.4%	17	15.6%
I Drugs Offences	85	92.4%	7	7.6%
J Public Order Offences	150	86.7%	23	13.3%
K All Other Offences (excluding Motoring)	94	82.5%	20	17.5%
L Motoring Offences	1,043	93.4%	74	6.6%
Admin Finalisations	0	0.0%	25	100.0%
TOTAL	2,123	87.3%	310	12.7%