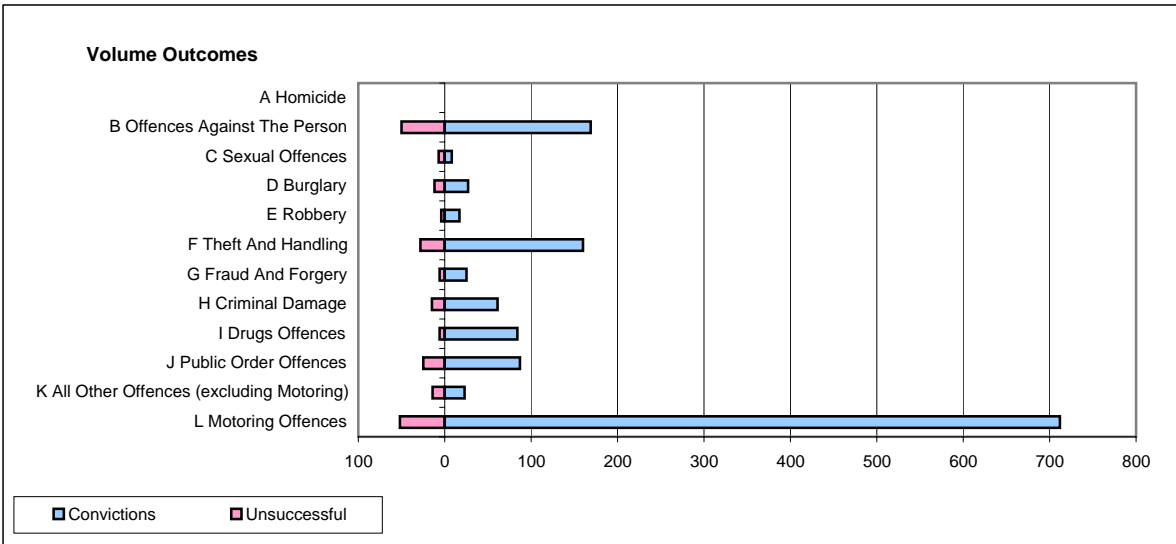
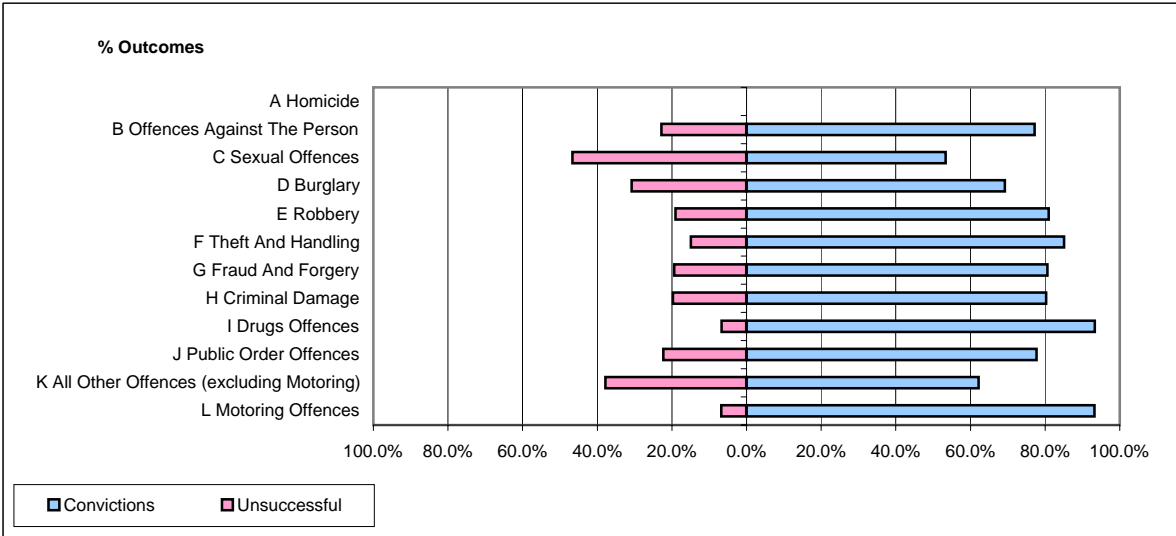


**CPS OUTCOMES BY PRINCIPAL OFFENCE CATEGORY**

**August 2007**

**P18-Hertfordshire**



	Convictions		Unsuccessful	
	Number of Defendants	%	Number of Defendants	%
<b>A Homicide</b>	<b>0</b>	<b>0</b>	<b>0</b>	<b>0</b>
<b>B Offences Against The Person</b>	<b>169</b>	<b>77.2%</b>	<b>50</b>	<b>22.8%</b>
<b>C Sexual Offences</b>	<b>8</b>	<b>53.3%</b>	<b>7</b>	<b>46.7%</b>
<b>D Burglary</b>	<b>27</b>	<b>69.2%</b>	<b>12</b>	<b>30.8%</b>
<b>E Robbery</b>	<b>17</b>	<b>81.0%</b>	<b>4</b>	<b>19.0%</b>
<b>F Theft And Handling</b>	<b>160</b>	<b>85.1%</b>	<b>28</b>	<b>14.9%</b>
<b>G Fraud And Forgery</b>	<b>25</b>	<b>80.6%</b>	<b>6</b>	<b>19.4%</b>
<b>H Criminal Damage</b>	<b>61</b>	<b>80.3%</b>	<b>15</b>	<b>19.7%</b>
<b>I Drugs Offences</b>	<b>84</b>	<b>93.3%</b>	<b>6</b>	<b>6.7%</b>
<b>J Public Order Offences</b>	<b>87</b>	<b>77.7%</b>	<b>25</b>	<b>22.3%</b>
<b>K All Other Offences (excluding Motoring)</b>	<b>23</b>	<b>62.2%</b>	<b>14</b>	<b>37.8%</b>
<b>L Motoring Offences</b>	<b>712</b>	<b>93.2%</b>	<b>52</b>	<b>6.8%</b>
<b>Admin Finalisations</b>	<b>0</b>	<b>0.0%</b>	<b>31</b>	<b>100.0%</b>
<b>TOTAL</b>	<b>1,373</b>	<b>84.6%</b>	<b>250</b>	<b>15.4%</b>