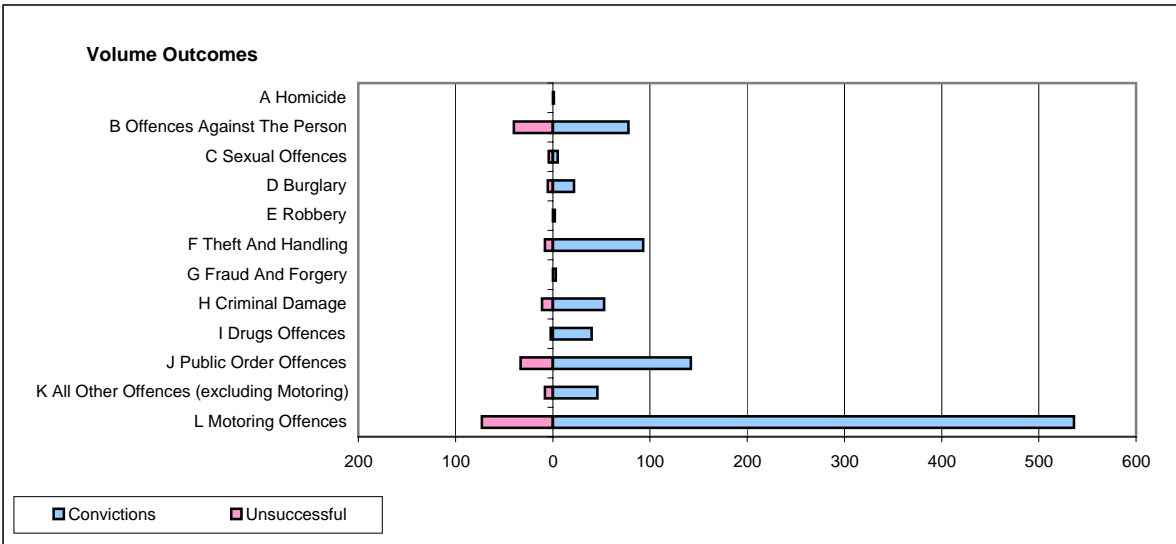
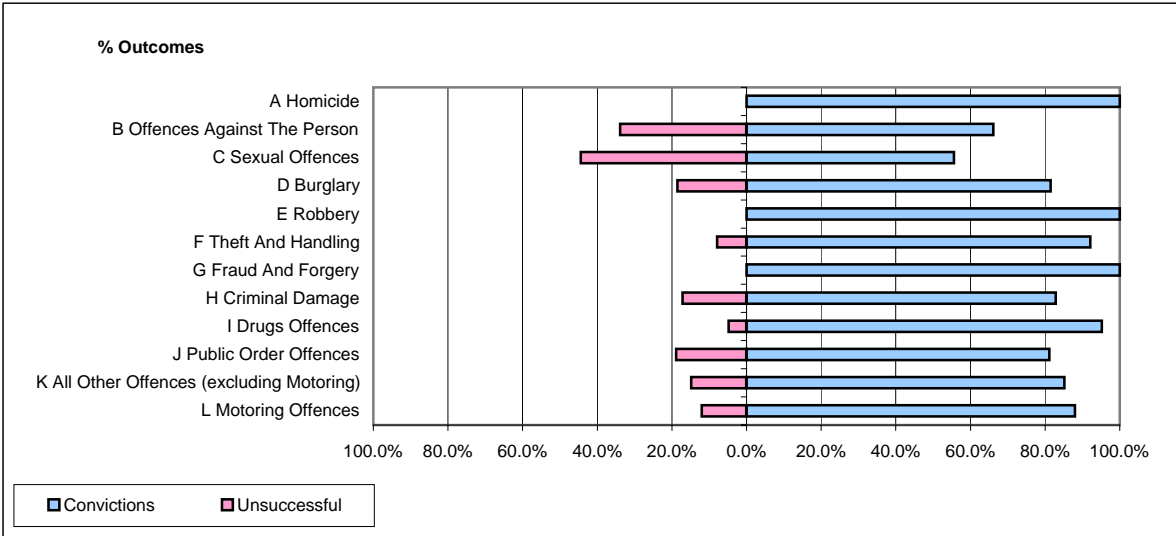


**CPS OUTCOMES BY PRINCIPAL OFFENCE CATEGORY**

**August 2007**

**P16-Gwent**



	Convictions		Unsuccessful	
	Number of Defendants	%	Number of Defendants	%
<b>A Homicide</b>	1	100.0%	0	0.0%
<b>B Offences Against The Person</b>	78	66.1%	40	33.9%
<b>C Sexual Offences</b>	5	55.6%	4	44.4%
<b>D Burglary</b>	22	81.5%	5	18.5%
<b>E Robbery</b>	2	100.0%	0	0.0%
<b>F Theft And Handling</b>	93	92.1%	8	7.9%
<b>G Fraud And Forgery</b>	3	100.0%	0	0.0%
<b>H Criminal Damage</b>	53	82.8%	11	17.2%
<b>I Drugs Offences</b>	40	95.2%	2	4.8%
<b>J Public Order Offences</b>	142	81.1%	33	18.9%
<b>K All Other Offences (excluding Motoring)</b>	46	85.2%	8	14.8%
<b>L Motoring Offences</b>	536	88.0%	73	12.0%
<b>Admin Finalisations</b>	0	0.0%	23	100.0%
<b>TOTAL</b>	<b>1,021</b>	<b>83.1%</b>	<b>207</b>	<b>16.9%</b>