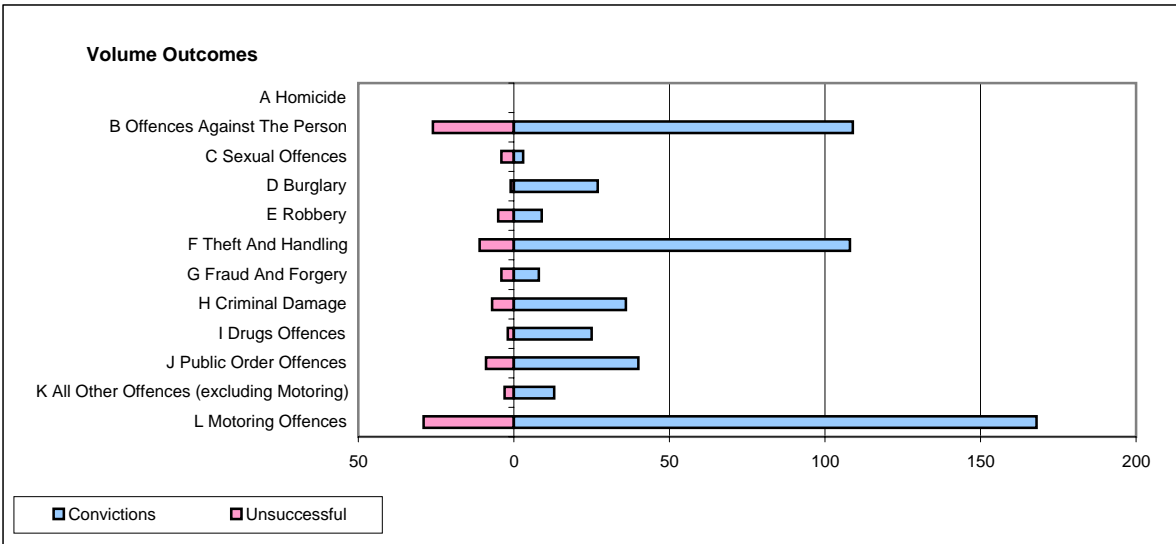
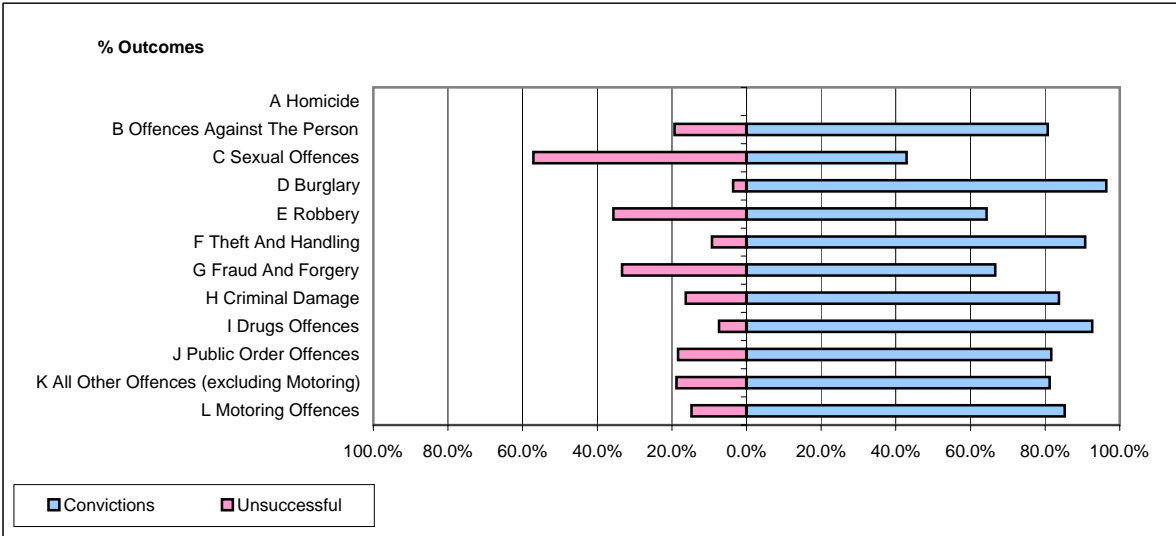


**CPS OUTCOMES BY PRINCIPAL OFFENCE CATEGORY**

**August 2007**

**P14-Gloucestershire**



	Convictions		Unsuccessful	
	Number of Defendants	%	Number of Defendants	%
<b>A Homicide</b>	<b>0</b>	<b>0</b>	<b>0</b>	<b>0</b>
<b>B Offences Against The Person</b>	<b>109</b>	<b>80.7%</b>	<b>26</b>	<b>19.3%</b>
<b>C Sexual Offences</b>	<b>3</b>	<b>42.9%</b>	<b>4</b>	<b>57.1%</b>
<b>D Burglary</b>	<b>27</b>	<b>96.4%</b>	<b>1</b>	<b>3.6%</b>
<b>E Robbery</b>	<b>9</b>	<b>64.3%</b>	<b>5</b>	<b>35.7%</b>
<b>F Theft And Handling</b>	<b>108</b>	<b>90.8%</b>	<b>11</b>	<b>9.2%</b>
<b>G Fraud And Forgery</b>	<b>8</b>	<b>66.7%</b>	<b>4</b>	<b>33.3%</b>
<b>H Criminal Damage</b>	<b>36</b>	<b>83.7%</b>	<b>7</b>	<b>16.3%</b>
<b>I Drugs Offences</b>	<b>25</b>	<b>92.6%</b>	<b>2</b>	<b>7.4%</b>
<b>J Public Order Offences</b>	<b>40</b>	<b>81.6%</b>	<b>9</b>	<b>18.4%</b>
<b>K All Other Offences (excluding Motoring)</b>	<b>13</b>	<b>81.3%</b>	<b>3</b>	<b>18.8%</b>
<b>L Motoring Offences</b>	<b>168</b>	<b>85.3%</b>	<b>29</b>	<b>14.7%</b>
<b>Admin Finalisations</b>	<b>0</b>	<b>0.0%</b>	<b>18</b>	<b>100.0%</b>
<b>TOTAL</b>	<b>546</b>	<b>82.1%</b>	<b>119</b>	<b>17.9%</b>