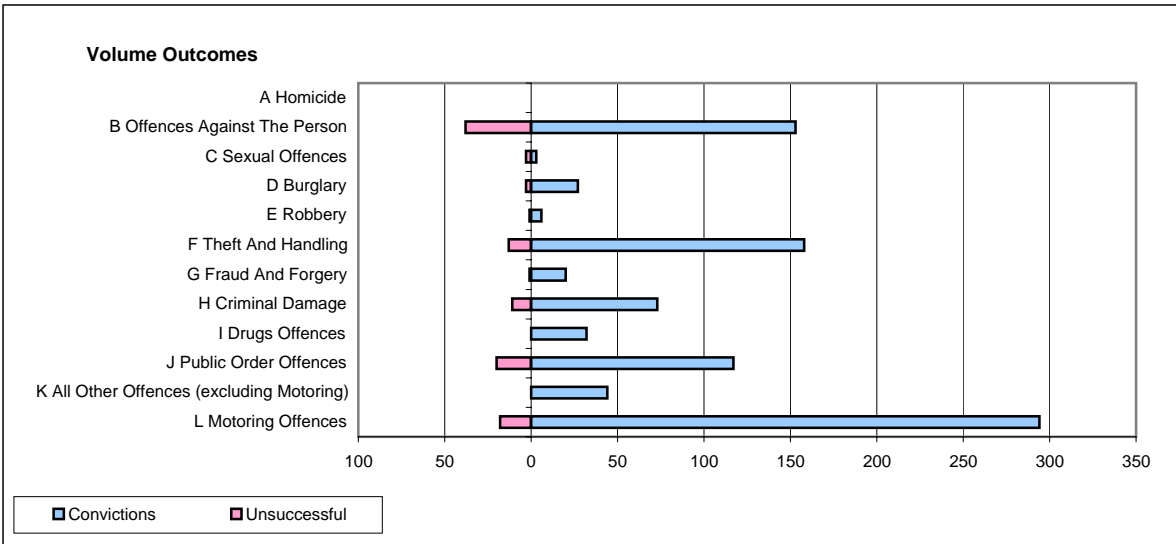
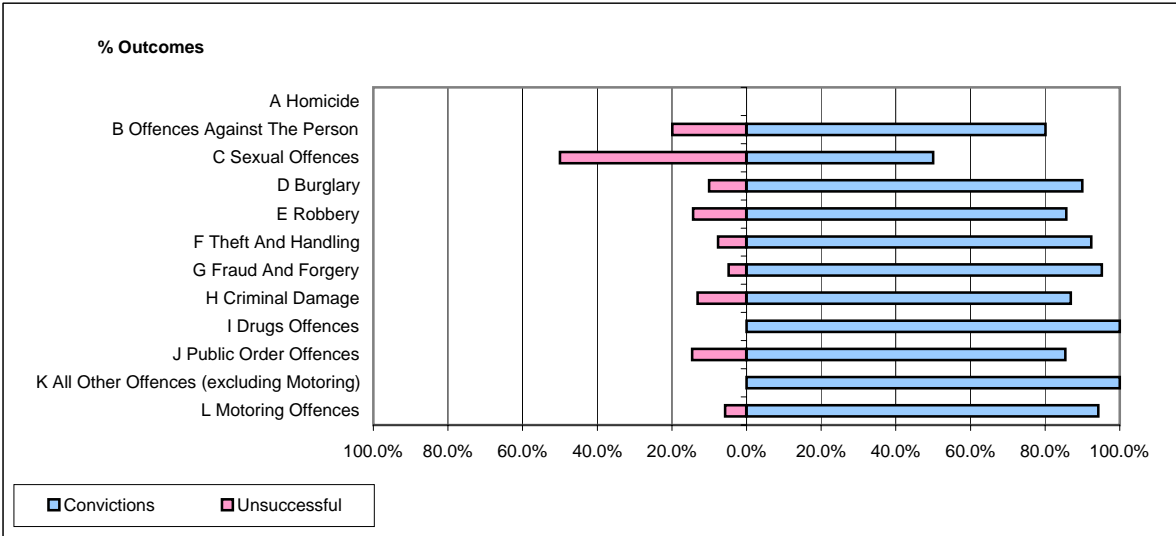


CPS OUTCOMES BY PRINCIPAL OFFENCE CATEGORY

August 2007

P11-Durham



	Convictions		Unsuccessful	
	Number of Defendants	%	Number of Defendants	%
A Homicide	0	0	0	0
B Offences Against The Person	153	80.1%	38	19.9%
C Sexual Offences	3	50.0%	3	50.0%
D Burglary	27	90.0%	3	10.0%
E Robbery	6	85.7%	1	14.3%
F Theft And Handling	158	92.4%	13	7.6%
G Fraud And Forgery	20	95.2%	1	4.8%
H Criminal Damage	73	86.9%	11	13.1%
I Drugs Offences	32	100.0%	0	0.0%
J Public Order Offences	117	85.4%	20	14.6%
K All Other Offences (excluding Motoring)	44	100.0%	0	0.0%
L Motoring Offences	294	94.2%	18	5.8%
Admin Finalisations	0	0.0%	9	100.0%
TOTAL	927	88.8%	117	11.2%