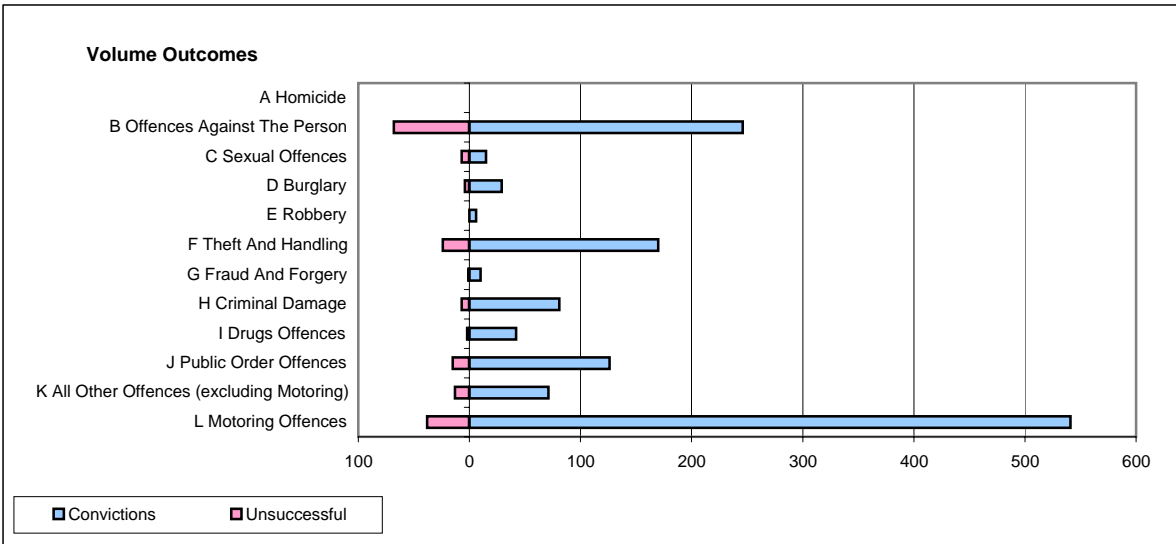
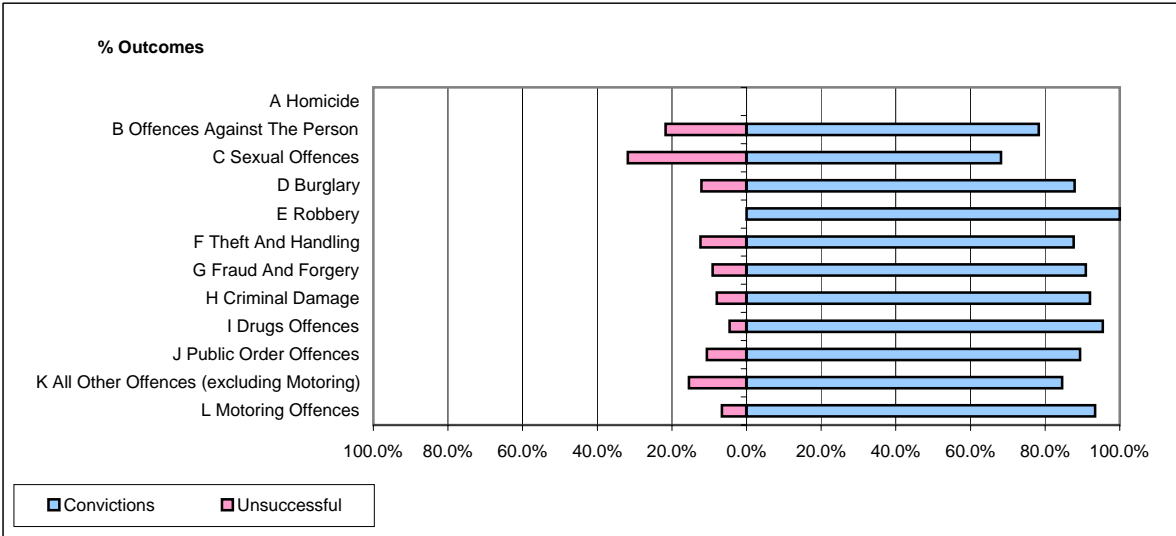


**CPS OUTCOMES BY PRINCIPAL OFFENCE CATEGORY**

**August 2007**

**P08-Derbyshire**



	Convictions		Unsuccessful	
	Number of Defendants	%	Number of Defendants	%
<b>A Homicide</b>	<b>0</b>	<b>0</b>	<b>0</b>	<b>0</b>
<b>B Offences Against The Person</b>	<b>246</b>	<b>78.3%</b>	<b>68</b>	<b>21.7%</b>
<b>C Sexual Offences</b>	<b>15</b>	<b>68.2%</b>	<b>7</b>	<b>31.8%</b>
<b>D Burglary</b>	<b>29</b>	<b>87.9%</b>	<b>4</b>	<b>12.1%</b>
<b>E Robbery</b>	<b>6</b>	<b>100.0%</b>	<b>0</b>	<b>0.0%</b>
<b>F Theft And Handling</b>	<b>170</b>	<b>87.6%</b>	<b>24</b>	<b>12.4%</b>
<b>G Fraud And Forgery</b>	<b>10</b>	<b>90.9%</b>	<b>1</b>	<b>9.1%</b>
<b>H Criminal Damage</b>	<b>81</b>	<b>92.0%</b>	<b>7</b>	<b>8.0%</b>
<b>I Drugs Offences</b>	<b>42</b>	<b>95.5%</b>	<b>2</b>	<b>4.5%</b>
<b>J Public Order Offences</b>	<b>126</b>	<b>89.4%</b>	<b>15</b>	<b>10.6%</b>
<b>K All Other Offences (excluding Motoring)</b>	<b>71</b>	<b>84.5%</b>	<b>13</b>	<b>15.5%</b>
<b>L Motoring Offences</b>	<b>541</b>	<b>93.4%</b>	<b>38</b>	<b>6.6%</b>
<b>Admin Finalisations</b>	<b>0</b>	<b>0.0%</b>	<b>16</b>	<b>100.0%</b>
<b>TOTAL</b>	<b>1,337</b>	<b>87.3%</b>	<b>195</b>	<b>12.7%</b>