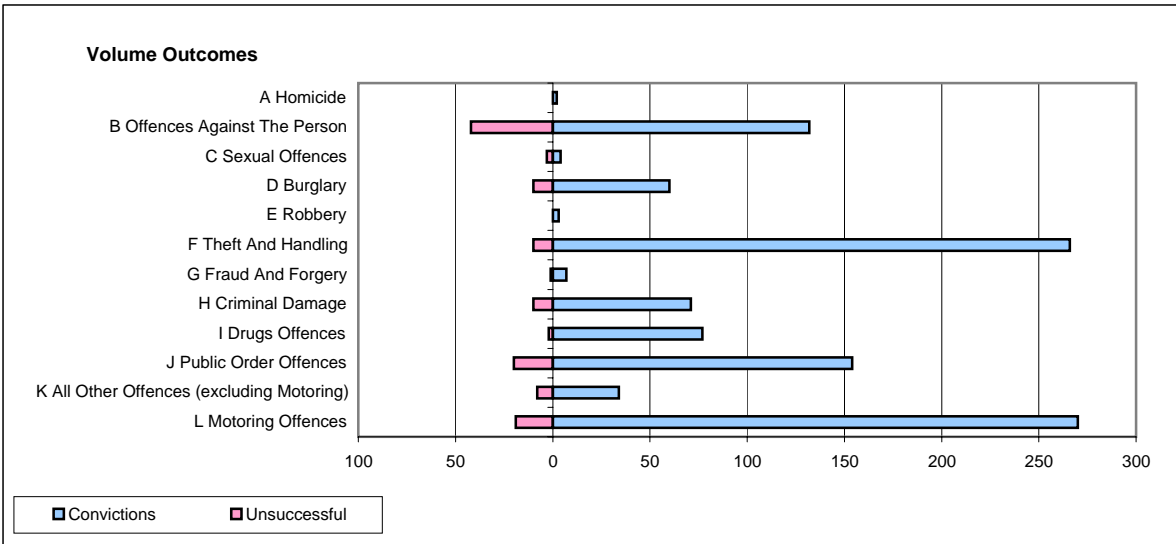
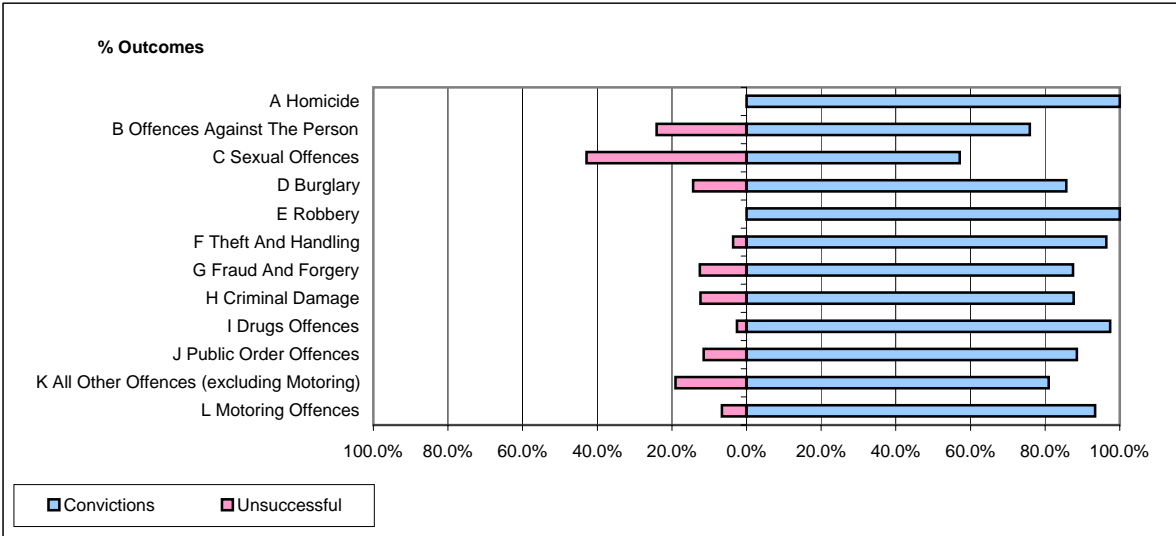


**CPS OUTCOMES BY PRINCIPAL OFFENCE CATEGORY**

**August 2007**

**P06-Cleveland**



	Convictions		Unsuccessful	
	Number of Defendants	%	Number of Defendants	%
<b>A Homicide</b>	<b>2</b>	<b>100.0%</b>	<b>0</b>	<b>0.0%</b>
<b>B Offences Against The Person</b>	<b>132</b>	<b>75.9%</b>	<b>42</b>	<b>24.1%</b>
<b>C Sexual Offences</b>	<b>4</b>	<b>57.1%</b>	<b>3</b>	<b>42.9%</b>
<b>D Burglary</b>	<b>60</b>	<b>85.7%</b>	<b>10</b>	<b>14.3%</b>
<b>E Robbery</b>	<b>3</b>	<b>100.0%</b>	<b>0</b>	<b>0.0%</b>
<b>F Theft And Handling</b>	<b>266</b>	<b>96.4%</b>	<b>10</b>	<b>3.6%</b>
<b>G Fraud And Forgery</b>	<b>7</b>	<b>87.5%</b>	<b>1</b>	<b>12.5%</b>
<b>H Criminal Damage</b>	<b>71</b>	<b>87.7%</b>	<b>10</b>	<b>12.3%</b>
<b>I Drugs Offences</b>	<b>77</b>	<b>97.5%</b>	<b>2</b>	<b>2.5%</b>
<b>J Public Order Offences</b>	<b>154</b>	<b>88.5%</b>	<b>20</b>	<b>11.5%</b>
<b>K All Other Offences (excluding Motoring)</b>	<b>34</b>	<b>81.0%</b>	<b>8</b>	<b>19.0%</b>
<b>L Motoring Offences</b>	<b>270</b>	<b>93.4%</b>	<b>19</b>	<b>6.6%</b>
<b>Admin Finalisations</b>	<b>0</b>	<b>0.0%</b>	<b>19</b>	<b>100.0%</b>
<b>TOTAL</b>	<b>1,080</b>	<b>88.2%</b>	<b>144</b>	<b>11.8%</b>