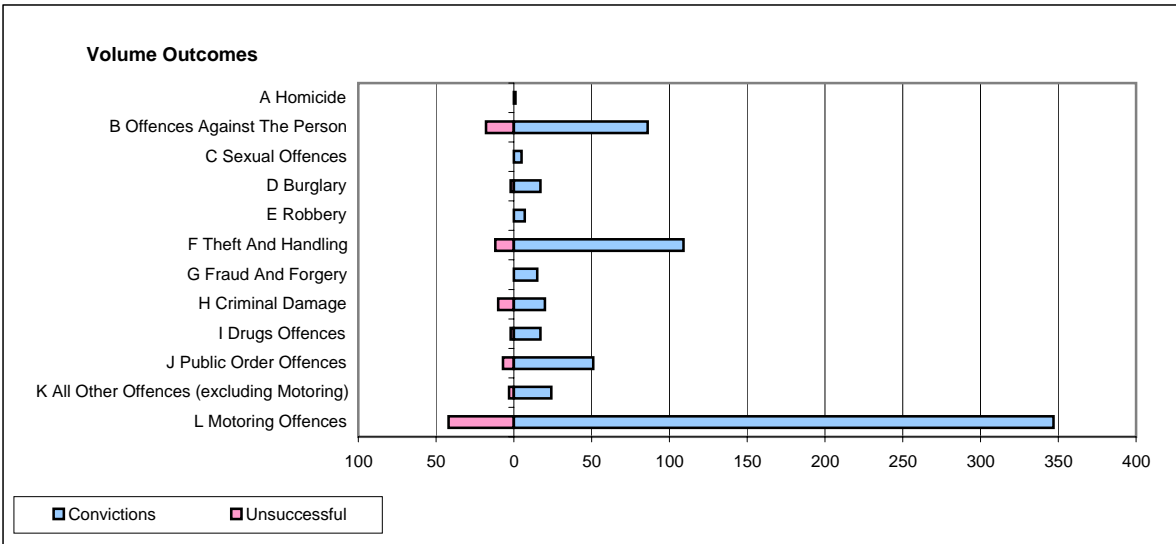
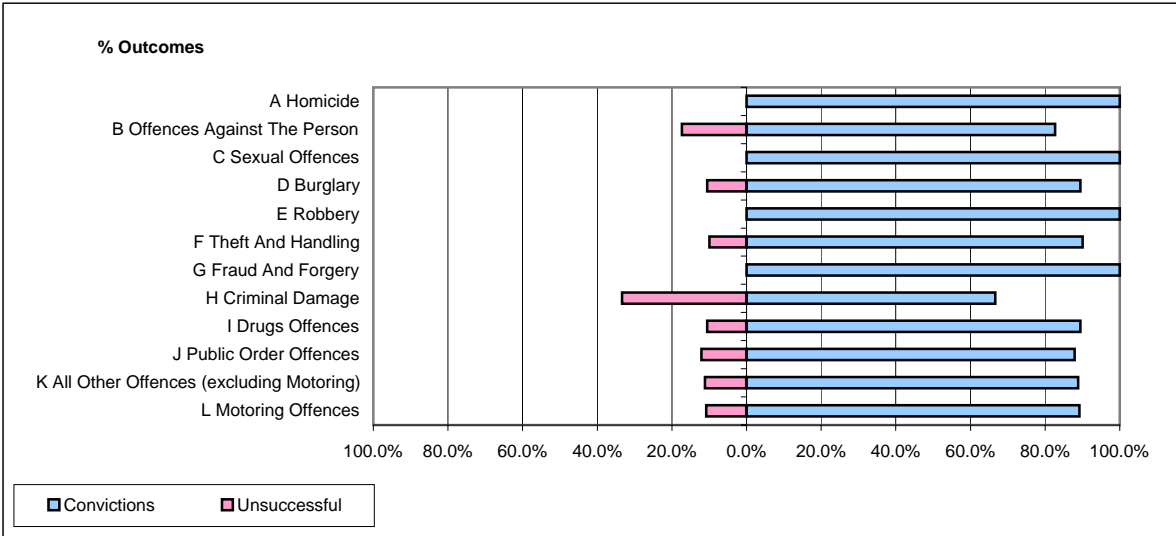


CPS OUTCOMES BY PRINCIPAL OFFENCE CATEGORY

August 2007

P02-Bedfordshire



	Convictions		Unsuccessful	
	Number of Defendants	%	Number of Defendants	%
A Homicide	1	100.0%	0	0.0%
B Offences Against The Person	86	82.7%	18	17.3%
C Sexual Offences	5	100.0%	0	0.0%
D Burglary	17	89.5%	2	10.5%
E Robbery	7	100.0%	0	0.0%
F Theft And Handling	109	90.1%	12	9.9%
G Fraud And Forgery	15	100.0%	0	0.0%
H Criminal Damage	20	66.7%	10	33.3%
I Drugs Offences	17	89.5%	2	10.5%
J Public Order Offences	51	87.9%	7	12.1%
K All Other Offences (excluding Motoring)	24	88.9%	3	11.1%
L Motoring Offences	347	89.2%	42	10.8%
Admin Finalisations	0	0.0%	8	100.0%
TOTAL	699	87.0%	104	13.0%