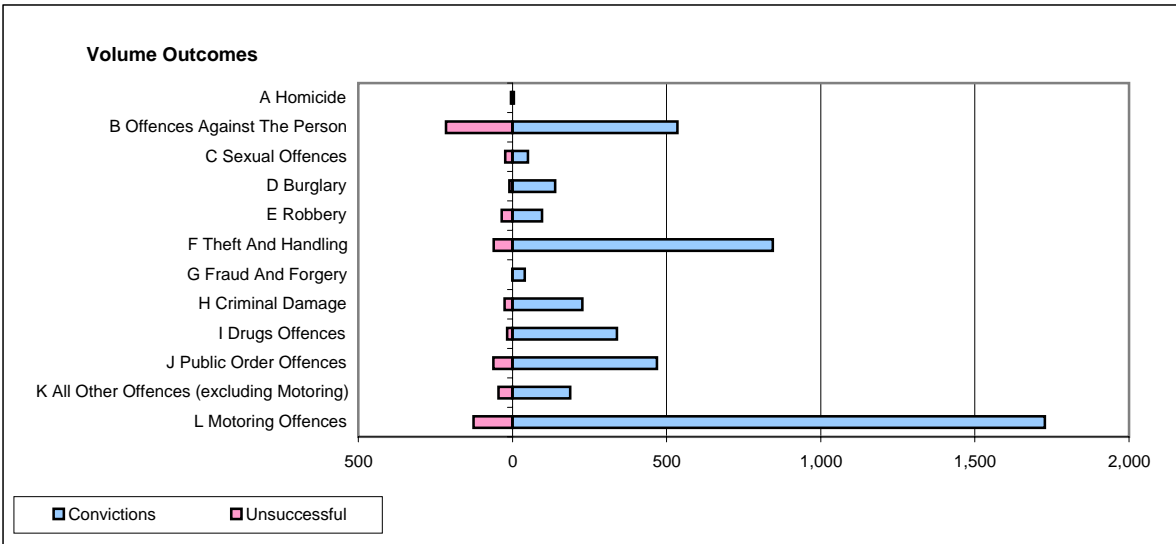
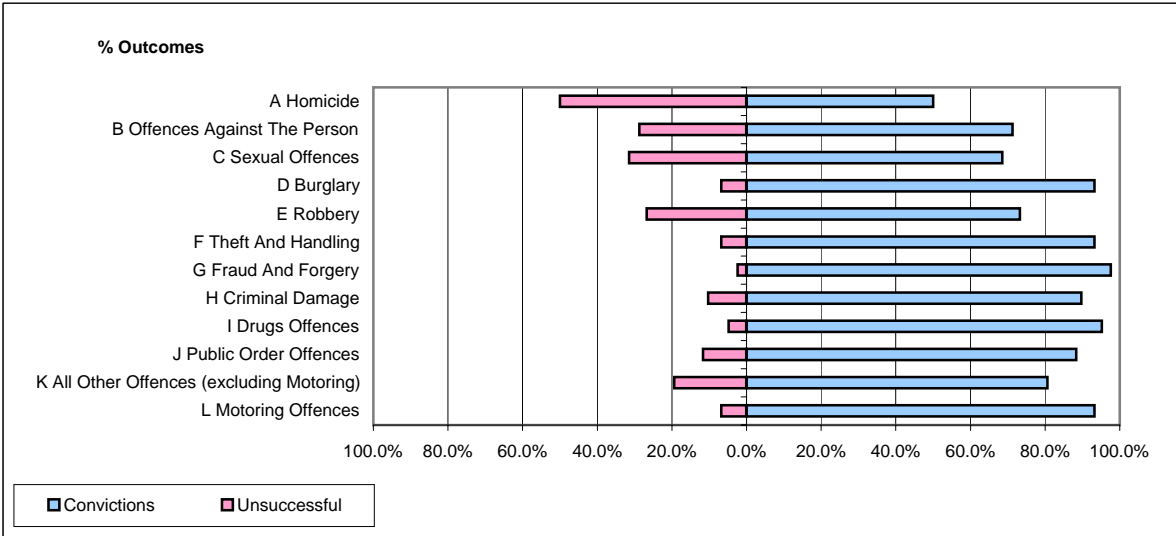


CPS OUTCOMES BY PRINCIPAL OFFENCE CATEGORY

July 2007

P41-WestMidlands



	Convictions		Unsuccessful	
	Number of Defendants	%	Number of Defendants	%
A Homicide	5	50.0%	5	50.0%
B Offences Against The Person	535	71.2%	216	28.8%
C Sexual Offences	50	68.5%	23	31.5%
D Burglary	138	93.2%	10	6.8%
E Robbery	96	73.3%	35	26.7%
F Theft And Handling	844	93.3%	61	6.7%
G Fraud And Forgery	40	97.6%	1	2.4%
H Criminal Damage	227	89.7%	26	10.3%
I Drugs Offences	339	95.2%	17	4.8%
J Public Order Offences	469	88.3%	62	11.7%
K All Other Offences (excluding Motoring)	187	80.6%	45	19.4%
L Motoring Offences	1,727	93.2%	126	6.8%
Admin Finalisations	0	0.0%	54	100.0%
TOTAL	4,657	87.2%	681	12.8%