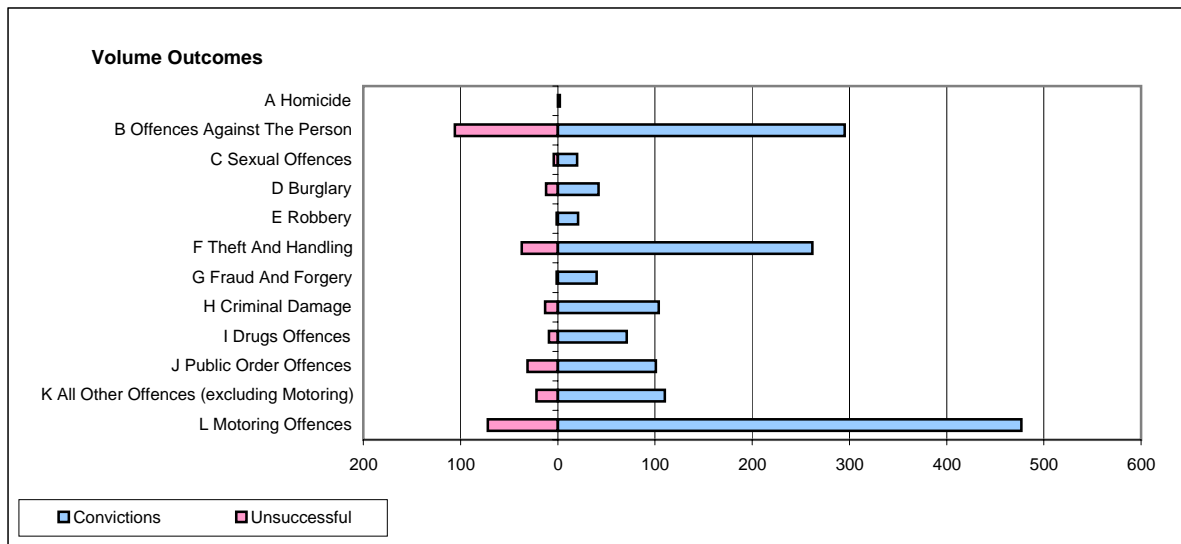
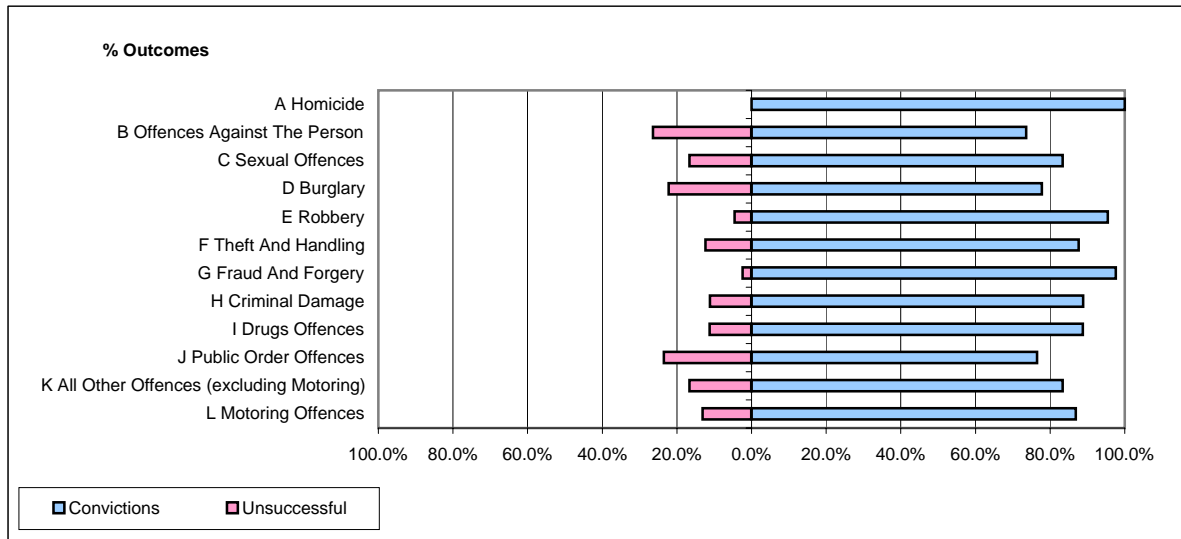


**CPS OUTCOMES BY PRINCIPAL OFFENCE CATEGORY**

**July 2007**

**P37-Sussex**



	Convictions		Unsuccessful	
	Number of Defendants	%	Number of Defendants	%
<b>A Homicide</b>	<b>2</b>	<b>100.0%</b>	<b>0</b>	<b>0.0%</b>
<b>B Offences Against The Person</b>	<b>295</b>	<b>73.6%</b>	<b>106</b>	<b>26.4%</b>
<b>C Sexual Offences</b>	<b>20</b>	<b>83.3%</b>	<b>4</b>	<b>16.7%</b>
<b>D Burglary</b>	<b>42</b>	<b>77.8%</b>	<b>12</b>	<b>22.2%</b>
<b>E Robbery</b>	<b>21</b>	<b>95.5%</b>	<b>1</b>	<b>4.5%</b>
<b>F Theft And Handling</b>	<b>262</b>	<b>87.6%</b>	<b>37</b>	<b>12.4%</b>
<b>G Fraud And Forgery</b>	<b>40</b>	<b>97.6%</b>	<b>1</b>	<b>2.4%</b>
<b>H Criminal Damage</b>	<b>104</b>	<b>88.9%</b>	<b>13</b>	<b>11.1%</b>
<b>I Drugs Offences</b>	<b>71</b>	<b>88.8%</b>	<b>9</b>	<b>11.3%</b>
<b>J Public Order Offences</b>	<b>101</b>	<b>76.5%</b>	<b>31</b>	<b>23.5%</b>
<b>K All Other Offences (excluding Motoring)</b>	<b>110</b>	<b>83.3%</b>	<b>22</b>	<b>16.7%</b>
<b>L Motoring Offences</b>	<b>477</b>	<b>86.9%</b>	<b>72</b>	<b>13.1%</b>
<b>Admin Finalisations</b>	<b>0</b>	<b>0.0%</b>	<b>42</b>	<b>100.0%</b>
<b>TOTAL</b>	<b>1,545</b>	<b>81.5%</b>	<b>350</b>	<b>18.5%</b>