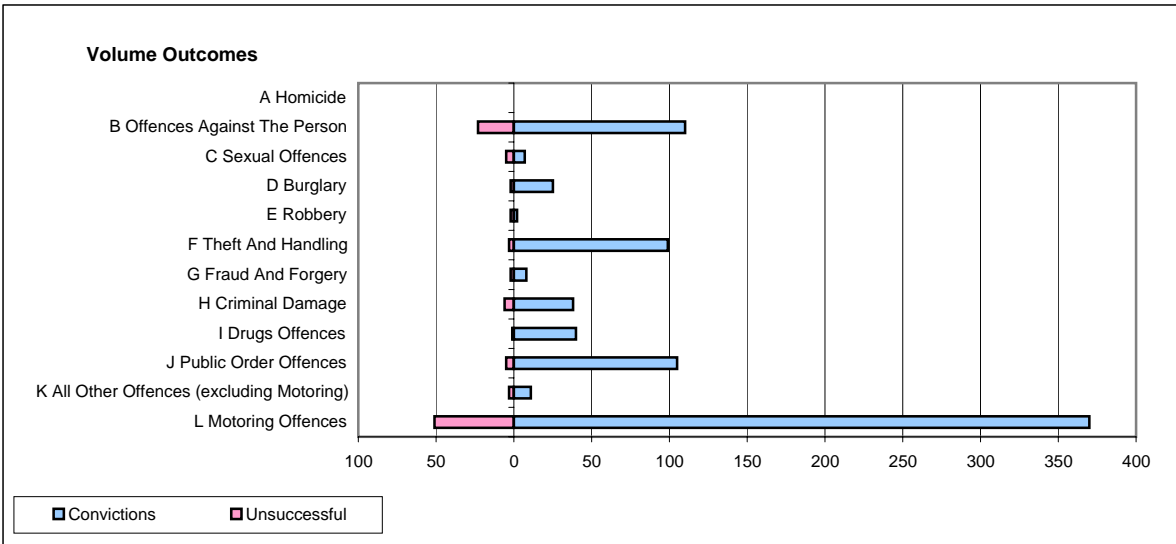
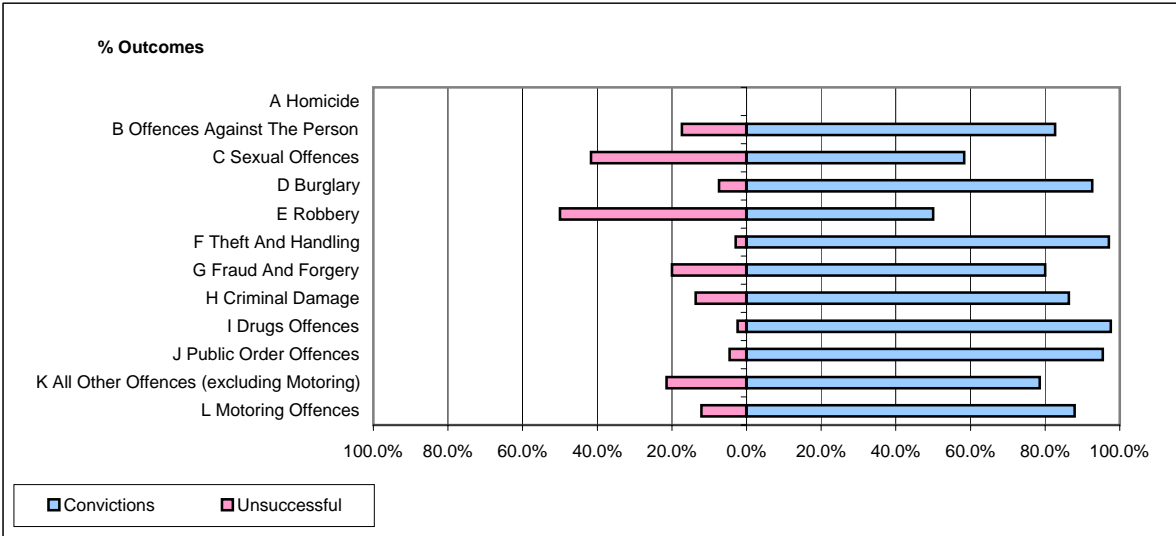


**CPS OUTCOMES BY PRINCIPAL OFFENCE CATEGORY**

July 2007

**P35-Suffolk**



	Convictions		Unsuccessful	
	Number of Defendants	%	Number of Defendants	%
<b>A Homicide</b>	<b>0</b>	<b>0</b>	<b>0</b>	<b>0</b>
<b>B Offences Against The Person</b>	<b>110</b>	<b>82.7%</b>	<b>23</b>	<b>17.3%</b>
<b>C Sexual Offences</b>	<b>7</b>	<b>58.3%</b>	<b>5</b>	<b>41.7%</b>
<b>D Burglary</b>	<b>25</b>	<b>92.6%</b>	<b>2</b>	<b>7.4%</b>
<b>E Robbery</b>	<b>2</b>	<b>50.0%</b>	<b>2</b>	<b>50.0%</b>
<b>F Theft And Handling</b>	<b>99</b>	<b>97.1%</b>	<b>3</b>	<b>2.9%</b>
<b>G Fraud And Forgery</b>	<b>8</b>	<b>80.0%</b>	<b>2</b>	<b>20.0%</b>
<b>H Criminal Damage</b>	<b>38</b>	<b>86.4%</b>	<b>6</b>	<b>13.6%</b>
<b>I Drugs Offences</b>	<b>40</b>	<b>97.6%</b>	<b>1</b>	<b>2.4%</b>
<b>J Public Order Offences</b>	<b>105</b>	<b>95.5%</b>	<b>5</b>	<b>4.5%</b>
<b>K All Other Offences (excluding Motoring)</b>	<b>11</b>	<b>78.6%</b>	<b>3</b>	<b>21.4%</b>
<b>L Motoring Offences</b>	<b>370</b>	<b>87.9%</b>	<b>51</b>	<b>12.1%</b>
<b>Admin Finalisations</b>	<b>0</b>	<b>0.0%</b>	<b>10</b>	<b>100.0%</b>
<b>TOTAL</b>	<b>815</b>	<b>87.8%</b>	<b>113</b>	<b>12.2%</b>