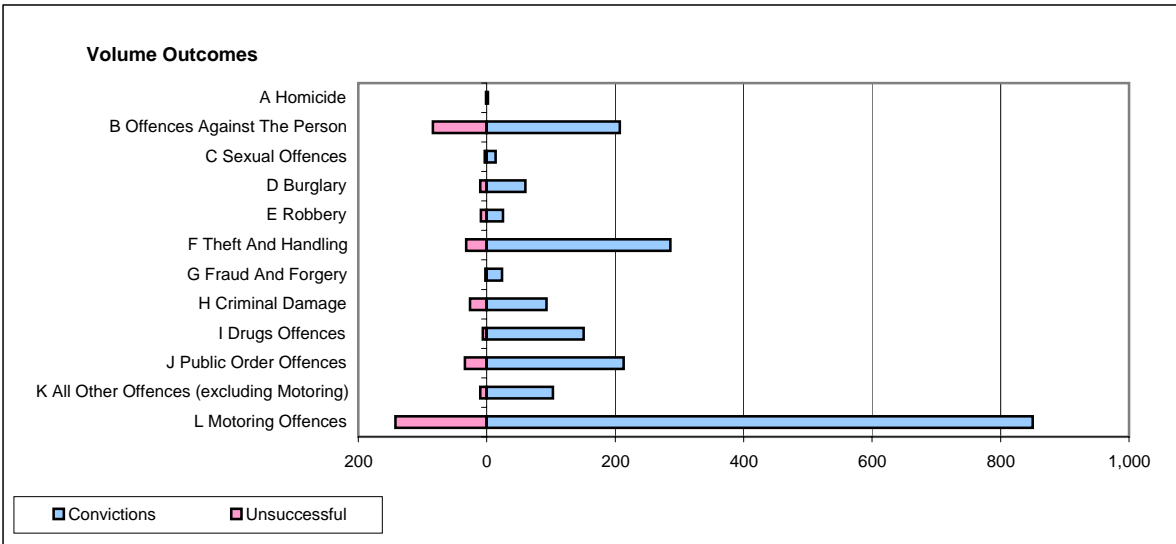
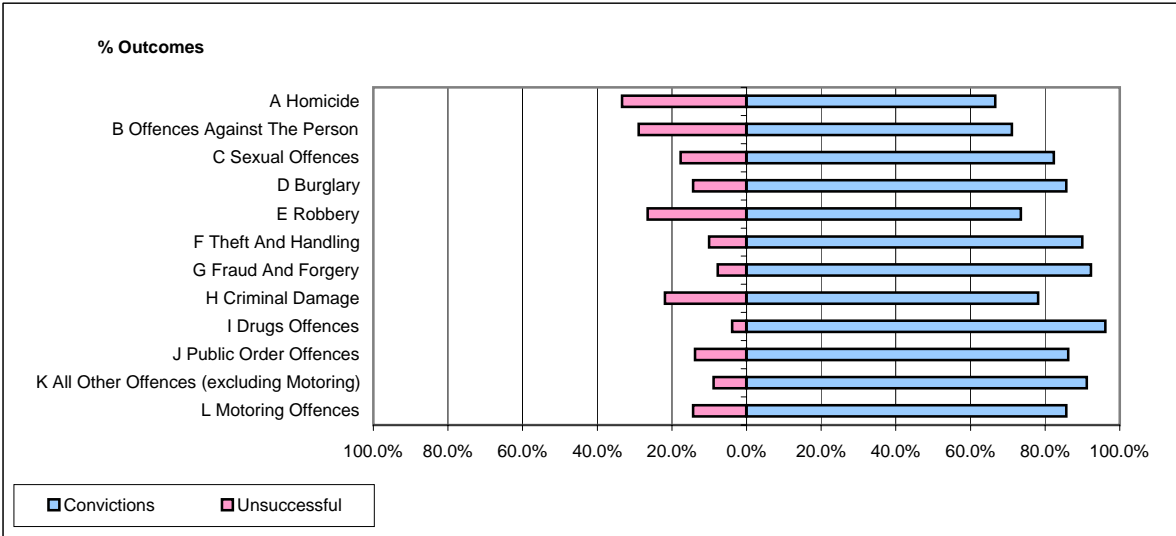


**CPS OUTCOMES BY PRINCIPAL OFFENCE CATEGORY**

**July 2007**

**P32-SouthWales**



	Convictions		Unsuccessful	
	Number of Defendants	%	Number of Defendants	%
<b>A Homicide</b>	<b>2</b>	<b>66.7%</b>	<b>1</b>	<b>33.3%</b>
<b>B Offences Against The Person</b>	<b>207</b>	<b>71.1%</b>	<b>84</b>	<b>28.9%</b>
<b>C Sexual Offences</b>	<b>14</b>	<b>82.4%</b>	<b>3</b>	<b>17.6%</b>
<b>D Burglary</b>	<b>60</b>	<b>85.7%</b>	<b>10</b>	<b>14.3%</b>
<b>E Robbery</b>	<b>25</b>	<b>73.5%</b>	<b>9</b>	<b>26.5%</b>
<b>F Theft And Handling</b>	<b>286</b>	<b>89.9%</b>	<b>32</b>	<b>10.1%</b>
<b>G Fraud And Forgery</b>	<b>24</b>	<b>92.3%</b>	<b>2</b>	<b>7.7%</b>
<b>H Criminal Damage</b>	<b>93</b>	<b>78.2%</b>	<b>26</b>	<b>21.8%</b>
<b>I Drugs Offences</b>	<b>151</b>	<b>96.2%</b>	<b>6</b>	<b>3.8%</b>
<b>J Public Order Offences</b>	<b>213</b>	<b>86.2%</b>	<b>34</b>	<b>13.8%</b>
<b>K All Other Offences (excluding Motoring)</b>	<b>103</b>	<b>91.2%</b>	<b>10</b>	<b>8.8%</b>
<b>L Motoring Offences</b>	<b>850</b>	<b>85.7%</b>	<b>142</b>	<b>14.3%</b>
<b>Admin Finalisations</b>	<b>0</b>	<b>0.0%</b>	<b>90</b>	<b>100.0%</b>
<b>TOTAL</b>	<b>2,028</b>	<b>81.9%</b>	<b>449</b>	<b>18.1%</b>