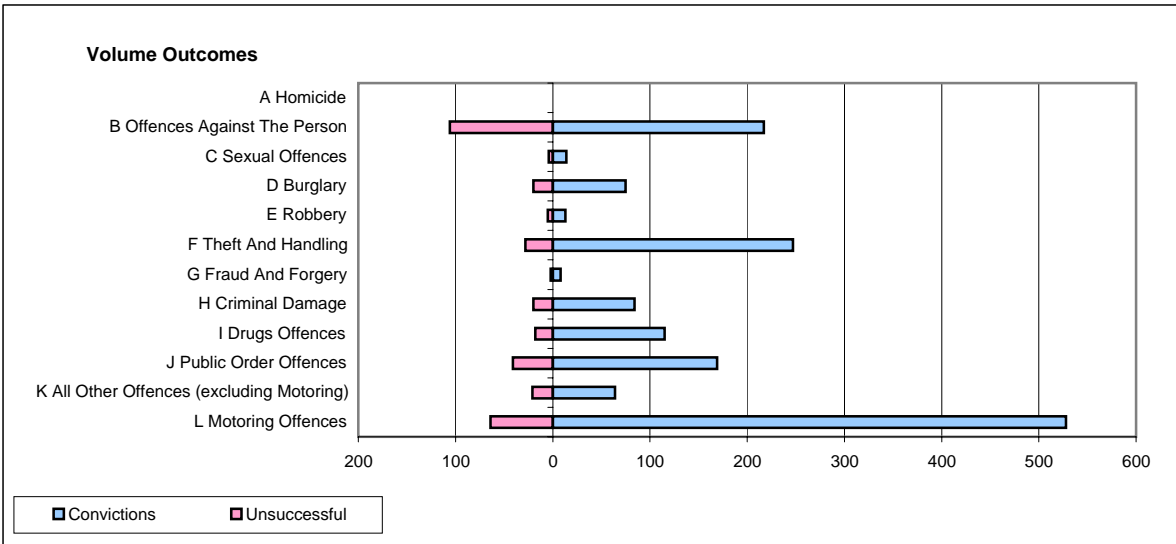
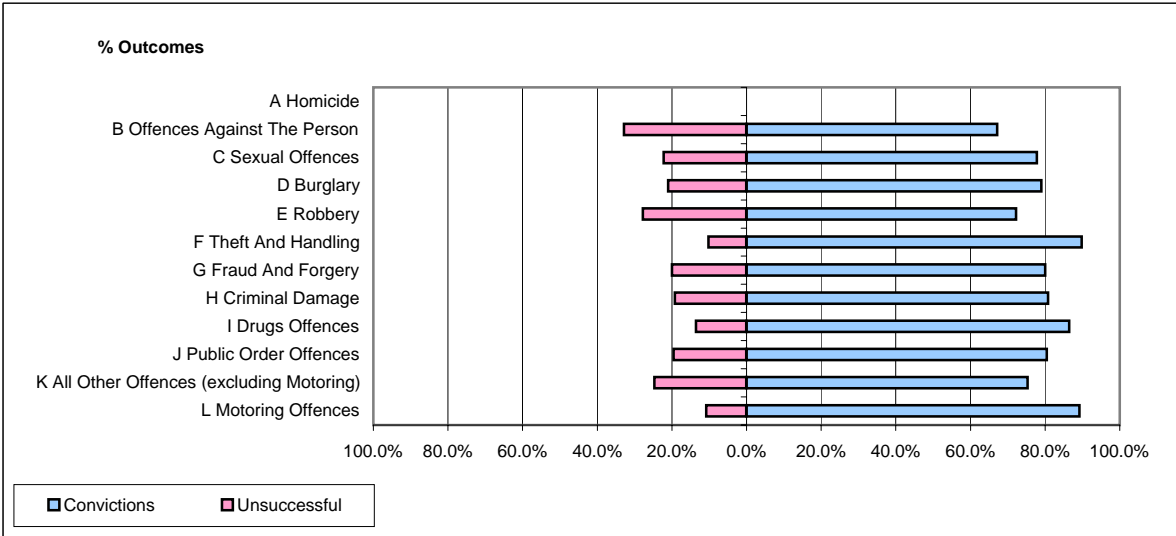


**CPS OUTCOMES BY PRINCIPAL OFFENCE CATEGORY**

**July 2007**

**P31-Nottinghamshire**



	Convictions		Unsuccessful	
	Number of Defendants	%	Number of Defendants	%
<b>A Homicide</b>	<b>0</b>	<b>0</b>	<b>0</b>	<b>0</b>
<b>B Offences Against The Person</b>	<b>217</b>	<b>67.2%</b>	<b>106</b>	<b>32.8%</b>
<b>C Sexual Offences</b>	<b>14</b>	<b>77.8%</b>	<b>4</b>	<b>22.2%</b>
<b>D Burglary</b>	<b>75</b>	<b>78.9%</b>	<b>20</b>	<b>21.1%</b>
<b>E Robbery</b>	<b>13</b>	<b>72.2%</b>	<b>5</b>	<b>27.8%</b>
<b>F Theft And Handling</b>	<b>247</b>	<b>89.8%</b>	<b>28</b>	<b>10.2%</b>
<b>G Fraud And Forgery</b>	<b>8</b>	<b>80.0%</b>	<b>2</b>	<b>20.0%</b>
<b>H Criminal Damage</b>	<b>84</b>	<b>80.8%</b>	<b>20</b>	<b>19.2%</b>
<b>I Drugs Offences</b>	<b>115</b>	<b>86.5%</b>	<b>18</b>	<b>13.5%</b>
<b>J Public Order Offences</b>	<b>169</b>	<b>80.5%</b>	<b>41</b>	<b>19.5%</b>
<b>K All Other Offences (excluding Motoring)</b>	<b>64</b>	<b>75.3%</b>	<b>21</b>	<b>24.7%</b>
<b>L Motoring Offences</b>	<b>528</b>	<b>89.2%</b>	<b>64</b>	<b>10.8%</b>
<b>Admin Finalisations</b>	<b>0</b>	<b>0.0%</b>	<b>24</b>	<b>100.0%</b>
<b>TOTAL</b>	<b>1,534</b>	<b>81.3%</b>	<b>353</b>	<b>18.7%</b>