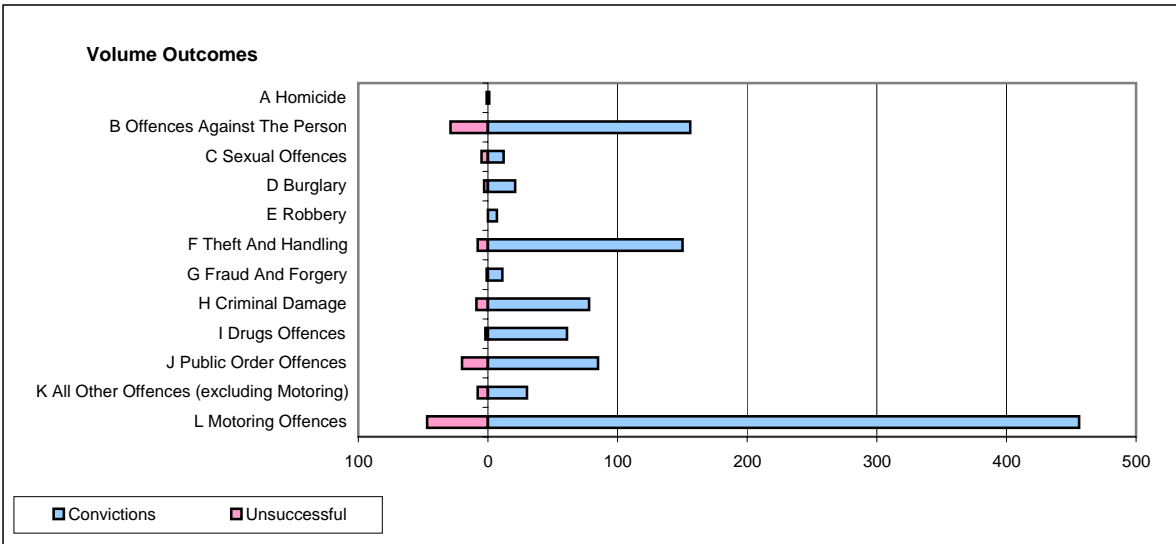
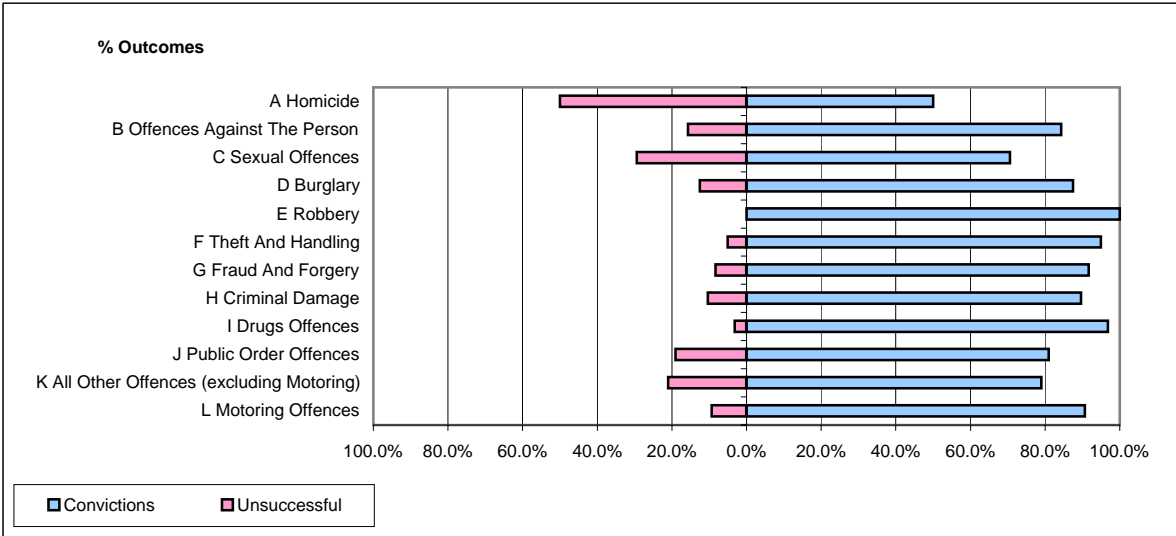


CPS OUTCOMES BY PRINCIPAL OFFENCE CATEGORY

July 2007

P26-Norfolk



	Convictions		Unsuccessful	
	Number of Defendants	%	Number of Defendants	%
A Homicide	1	50.0%	1	50.0%
B Offences Against The Person	156	84.3%	29	15.7%
C Sexual Offences	12	70.6%	5	29.4%
D Burglary	21	87.5%	3	12.5%
E Robbery	7	100.0%	0	0.0%
F Theft And Handling	150	94.9%	8	5.1%
G Fraud And Forgery	11	91.7%	1	8.3%
H Criminal Damage	78	89.7%	9	10.3%
I Drugs Offences	61	96.8%	2	3.2%
J Public Order Offences	85	81.0%	20	19.0%
K All Other Offences (excluding Motoring)	30	78.9%	8	21.1%
L Motoring Offences	456	90.7%	47	9.3%
Admin Finalisations	0	0.0%	30	100.0%
TOTAL	1,068	86.8%	163	13.2%