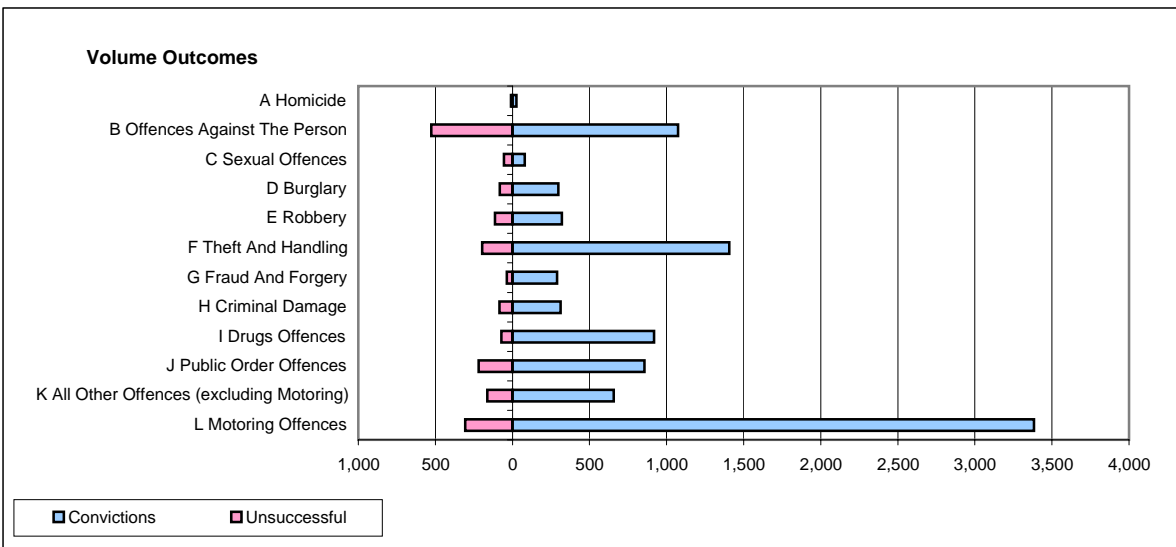
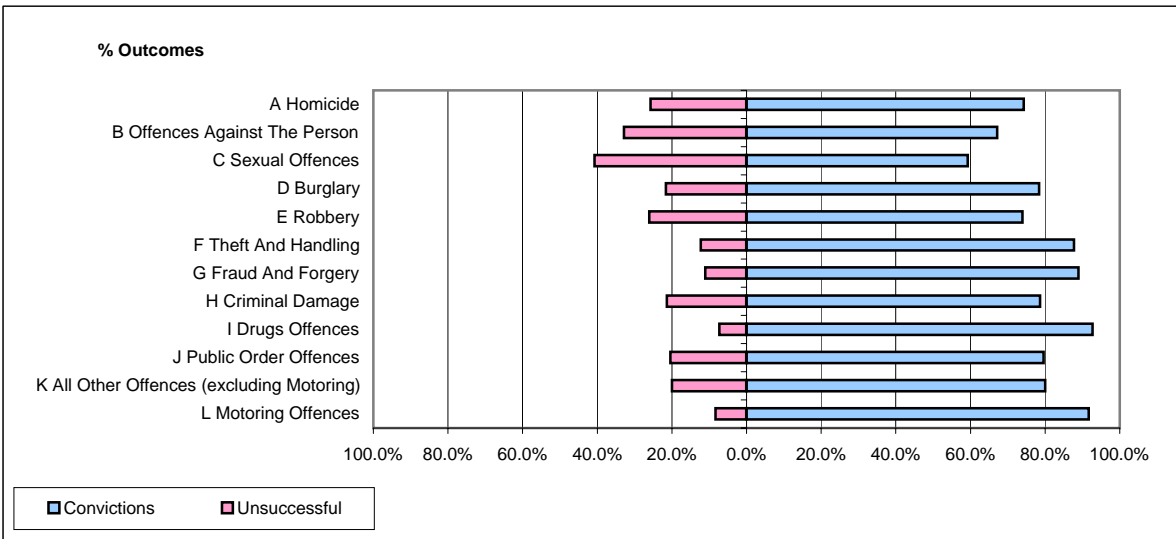


CPS OUTCOMES BY PRINCIPAL OFFENCE CATEGORY

July 2007

P25-Metropolitan&City



	Convictions		Unsuccessful	
	Number of Defendants	%	Number of Defendants	%
A Homicide	26	74.3%	9	25.7%
B Offences Against The Person	1,075	67.1%	526	32.9%
C Sexual Offences	80	59.3%	55	40.7%
D Burglary	298	78.4%	82	21.6%
E Robbery	320	73.9%	113	26.1%
F Theft And Handling	1,406	87.7%	197	12.3%
G Fraud And Forgery	289	88.9%	36	11.1%
H Criminal Damage	313	78.6%	85	21.4%
I Drugs Offences	918	92.7%	72	7.3%
J Public Order Offences	856	79.6%	220	20.4%
K All Other Offences (excluding Motoring)	657	80.0%	164	20.0%
L Motoring Offences	3,383	91.7%	306	8.3%
Admin Finalisations	0	0.0%	407	100.0%
TOTAL	9,621	80.9%	2,272	19.1%