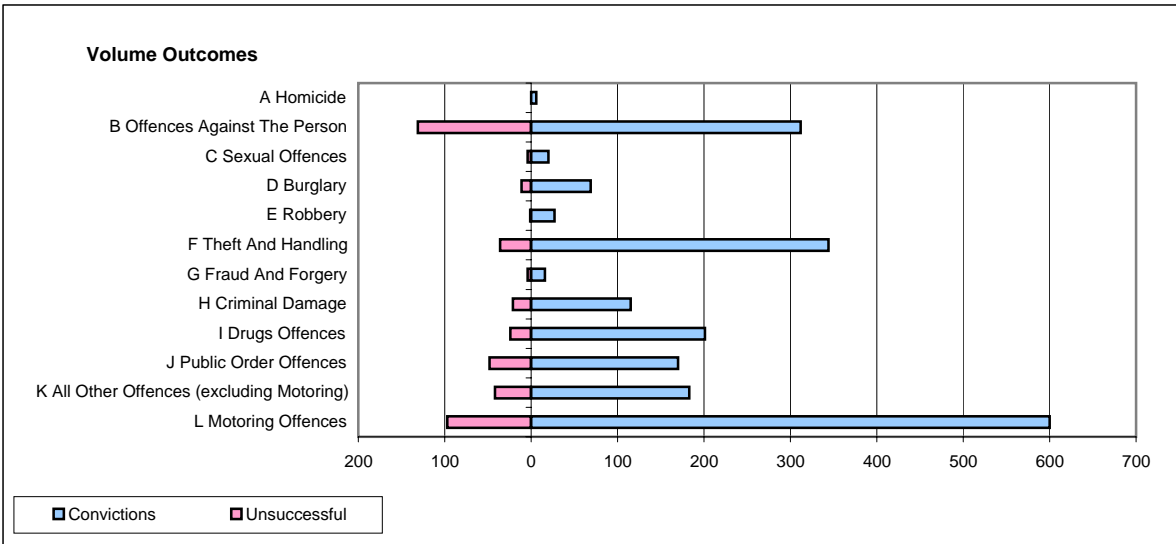
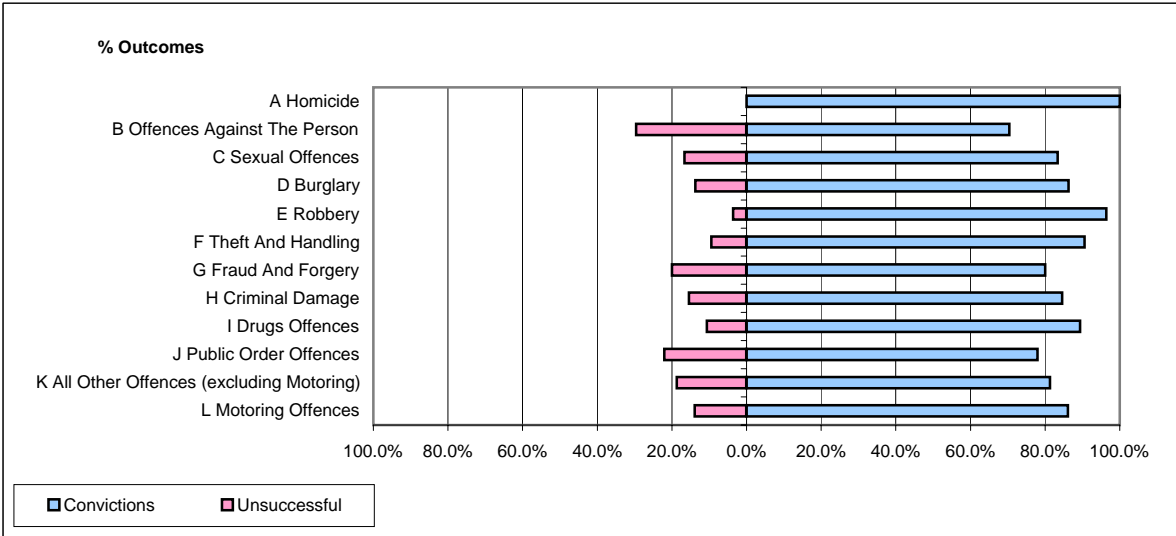


CPS OUTCOMES BY PRINCIPAL OFFENCE CATEGORY

July 2007

P24-Merseyside



	Convictions		Unsuccessful	
	Number of Defendants	%	Number of Defendants	%
A Homicide	6	100.0%	0	0.0%
B Offences Against The Person	312	70.4%	131	29.6%
C Sexual Offences	20	83.3%	4	16.7%
D Burglary	69	86.3%	11	13.8%
E Robbery	27	96.4%	1	3.6%
F Theft And Handling	344	90.5%	36	9.5%
G Fraud And Forgery	16	80.0%	4	20.0%
H Criminal Damage	115	84.6%	21	15.4%
I Drugs Offences	201	89.3%	24	10.7%
J Public Order Offences	170	78.0%	48	22.0%
K All Other Offences (excluding Motoring)	183	81.3%	42	18.7%
L Motoring Offences	600	86.1%	97	13.9%
Admin Finalisations	0	0.0%	45	100.0%
TOTAL	2,063	81.6%	464	18.4%