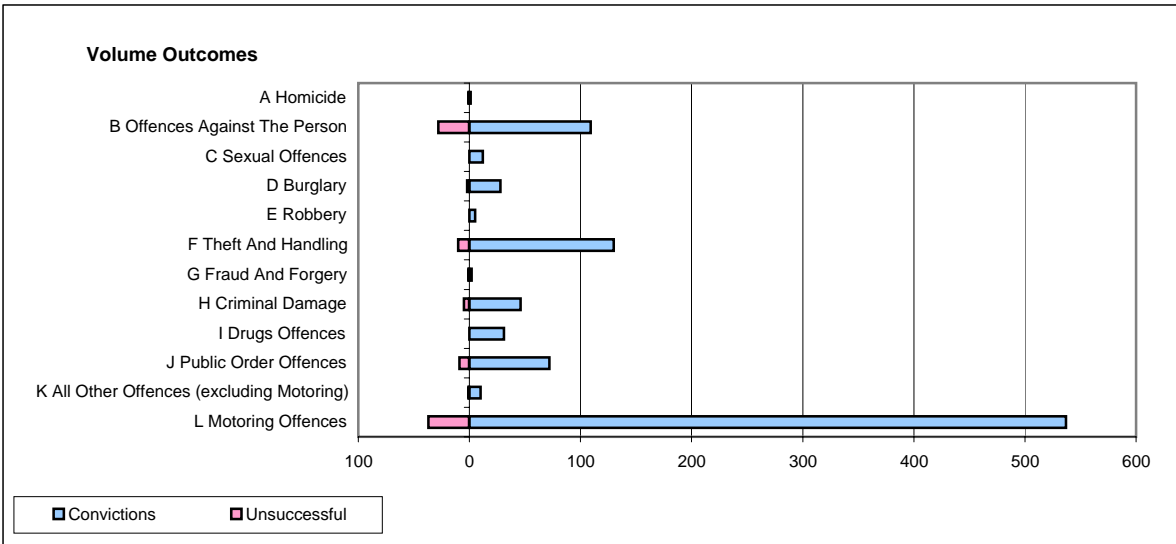
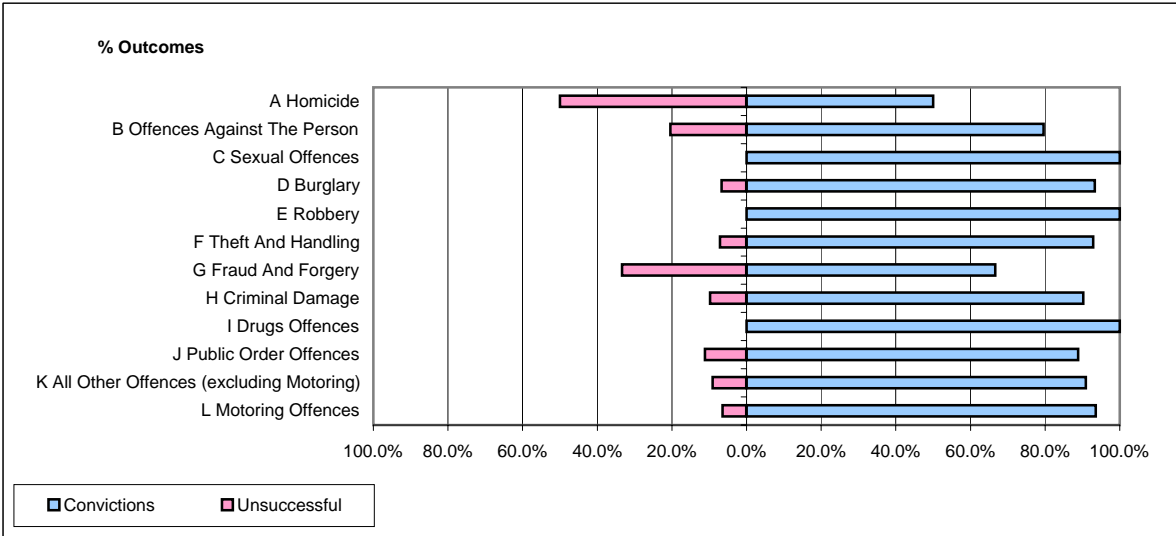


CPS OUTCOMES BY PRINCIPAL OFFENCE CATEGORY

July 2007

P23-Lincolnshire



	Convictions		Unsuccessful	
	Number of Defendants	%	Number of Defendants	%
A Homicide	1	50.0%	1	50.0%
B Offences Against The Person	109	79.6%	28	20.4%
C Sexual Offences	12	100.0%	0	0.0%
D Burglary	28	93.3%	2	6.7%
E Robbery	5	100.0%	0	0.0%
F Theft And Handling	130	92.9%	10	7.1%
G Fraud And Forgery	2	66.7%	1	33.3%
H Criminal Damage	46	90.2%	5	9.8%
I Drugs Offences	31	100.0%	0	0.0%
J Public Order Offences	72	88.9%	9	11.1%
K All Other Offences (excluding Motoring)	10	90.9%	1	9.1%
L Motoring Offences	537	93.6%	37	6.4%
Admin Finalisations	0	0.0%	10	100.0%
TOTAL	983	90.4%	104	9.6%