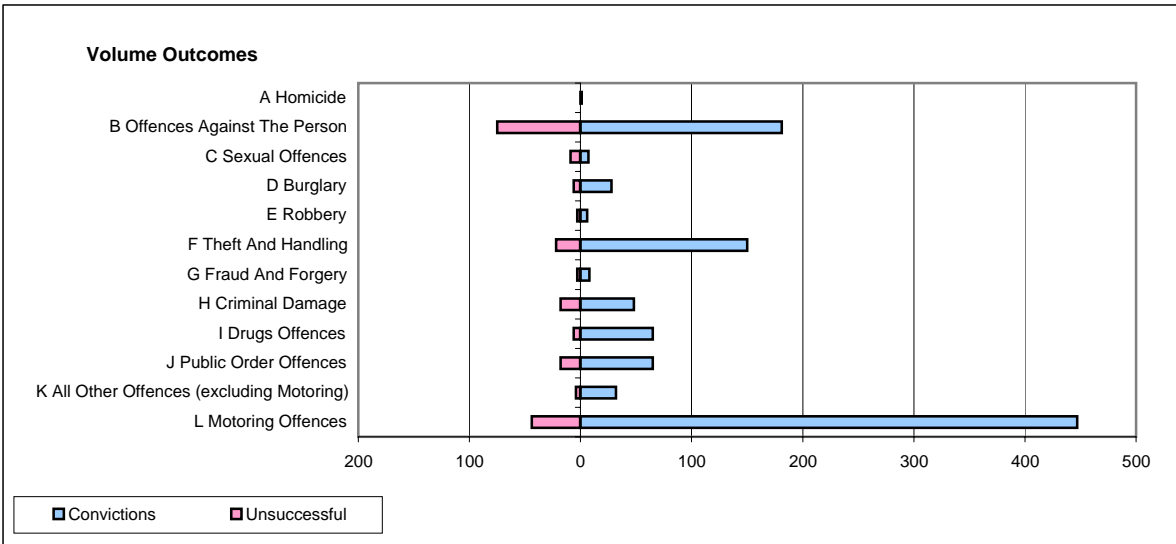
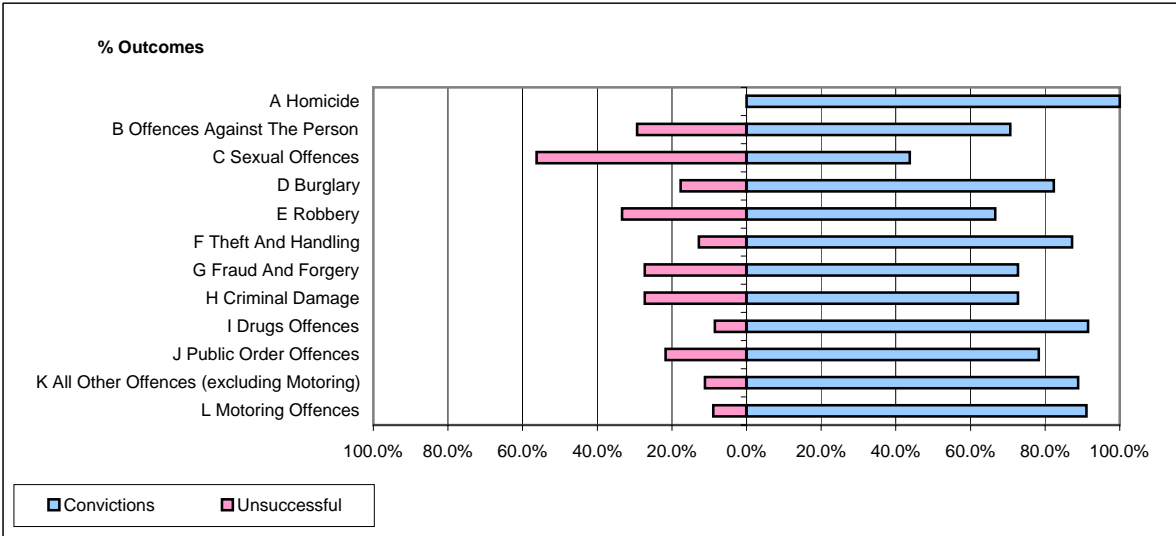


**CPS OUTCOMES BY PRINCIPAL OFFENCE CATEGORY**

**July 2007**

**P22-Leicestershire**



	Convictions		Unsuccessful	
	Number of Defendants	%	Number of Defendants	%
<b>A Homicide</b>	<b>1</b>	<b>100.0%</b>	<b>0</b>	<b>0.0%</b>
<b>B Offences Against The Person</b>	<b>181</b>	<b>70.7%</b>	<b>75</b>	<b>29.3%</b>
<b>C Sexual Offences</b>	<b>7</b>	<b>43.8%</b>	<b>9</b>	<b>56.3%</b>
<b>D Burglary</b>	<b>28</b>	<b>82.4%</b>	<b>6</b>	<b>17.6%</b>
<b>E Robbery</b>	<b>6</b>	<b>66.7%</b>	<b>3</b>	<b>33.3%</b>
<b>F Theft And Handling</b>	<b>150</b>	<b>87.2%</b>	<b>22</b>	<b>12.8%</b>
<b>G Fraud And Forgery</b>	<b>8</b>	<b>72.7%</b>	<b>3</b>	<b>27.3%</b>
<b>H Criminal Damage</b>	<b>48</b>	<b>72.7%</b>	<b>18</b>	<b>27.3%</b>
<b>I Drugs Offences</b>	<b>65</b>	<b>91.5%</b>	<b>6</b>	<b>8.5%</b>
<b>J Public Order Offences</b>	<b>65</b>	<b>78.3%</b>	<b>18</b>	<b>21.7%</b>
<b>K All Other Offences (excluding Motoring)</b>	<b>32</b>	<b>88.9%</b>	<b>4</b>	<b>11.1%</b>
<b>L Motoring Offences</b>	<b>447</b>	<b>91.0%</b>	<b>44</b>	<b>9.0%</b>
<b>Admin Finalisations</b>	<b>0</b>	<b>0.0%</b>	<b>30</b>	<b>100.0%</b>
<b>TOTAL</b>	<b>1,038</b>	<b>81.3%</b>	<b>238</b>	<b>18.7%</b>