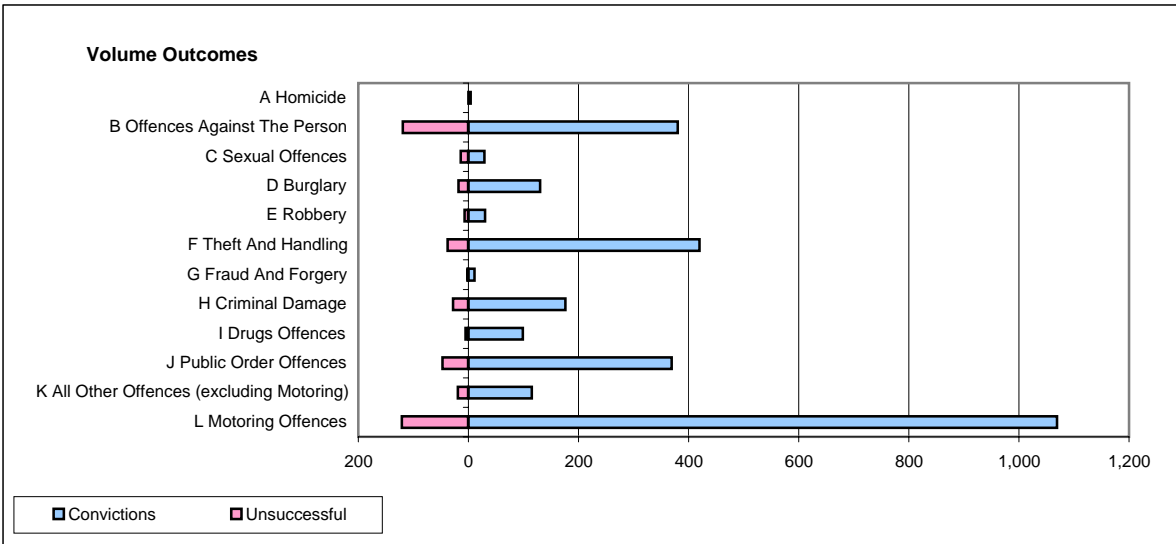
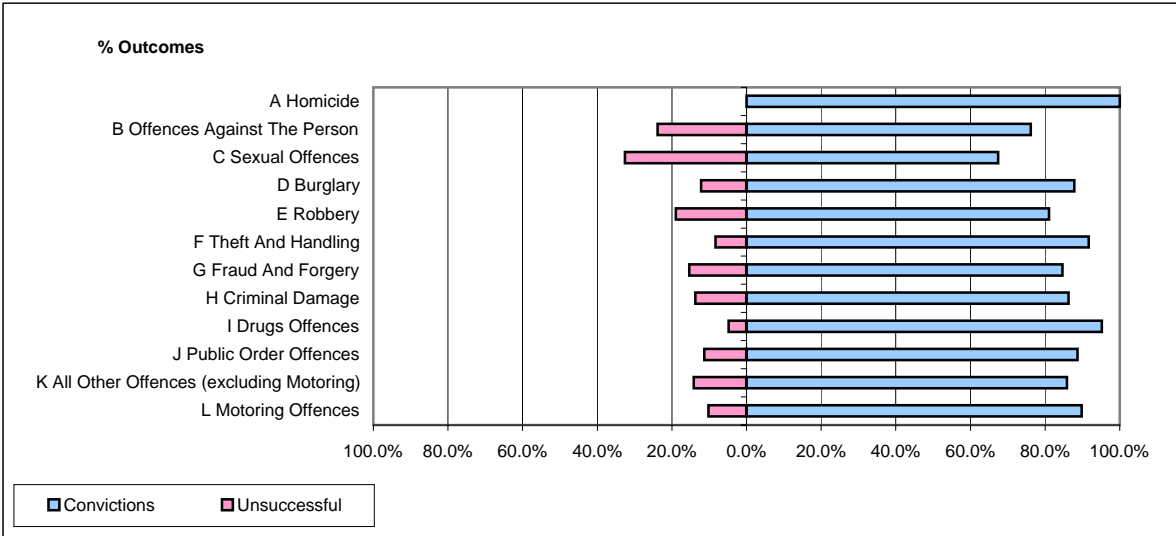


**CPS OUTCOMES BY PRINCIPAL OFFENCE CATEGORY**

July 2007

**P21-Lancashire**



	Convictions		Unsuccessful	
	Number of Defendants	%	Number of Defendants	%
<b>A Homicide</b>	<b>4</b>	<b>100.0%</b>	<b>0</b>	<b>0.0%</b>
<b>B Offences Against The Person</b>	<b>380</b>	<b>76.2%</b>	<b>119</b>	<b>23.8%</b>
<b>C Sexual Offences</b>	<b>29</b>	<b>67.4%</b>	<b>14</b>	<b>32.6%</b>
<b>D Burglary</b>	<b>130</b>	<b>87.8%</b>	<b>18</b>	<b>12.2%</b>
<b>E Robbery</b>	<b>30</b>	<b>81.1%</b>	<b>7</b>	<b>18.9%</b>
<b>F Theft And Handling</b>	<b>420</b>	<b>91.7%</b>	<b>38</b>	<b>8.3%</b>
<b>G Fraud And Forgery</b>	<b>11</b>	<b>84.6%</b>	<b>2</b>	<b>15.4%</b>
<b>H Criminal Damage</b>	<b>176</b>	<b>86.3%</b>	<b>28</b>	<b>13.7%</b>
<b>I Drugs Offences</b>	<b>99</b>	<b>95.2%</b>	<b>5</b>	<b>4.8%</b>
<b>J Public Order Offences</b>	<b>369</b>	<b>88.7%</b>	<b>47</b>	<b>11.3%</b>
<b>K All Other Offences (excluding Motoring)</b>	<b>115</b>	<b>85.8%</b>	<b>19</b>	<b>14.2%</b>
<b>L Motoring Offences</b>	<b>1,069</b>	<b>89.8%</b>	<b>121</b>	<b>10.2%</b>
<b>Admin Finalisations</b>	<b>0</b>	<b>0.0%</b>	<b>55</b>	<b>100.0%</b>
<b>TOTAL</b>	<b>2,832</b>	<b>85.7%</b>	<b>473</b>	<b>14.3%</b>