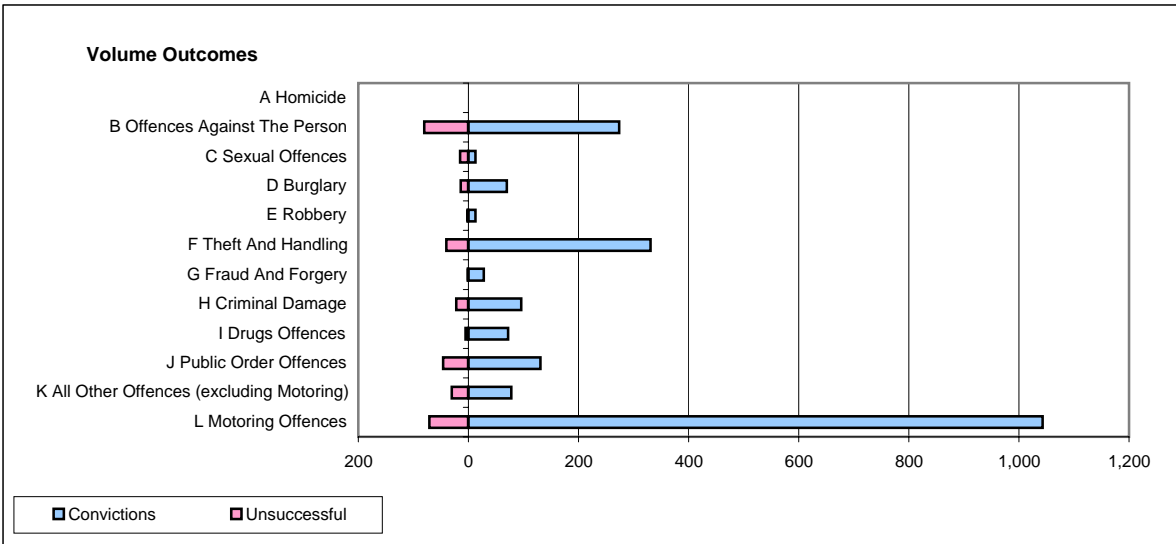
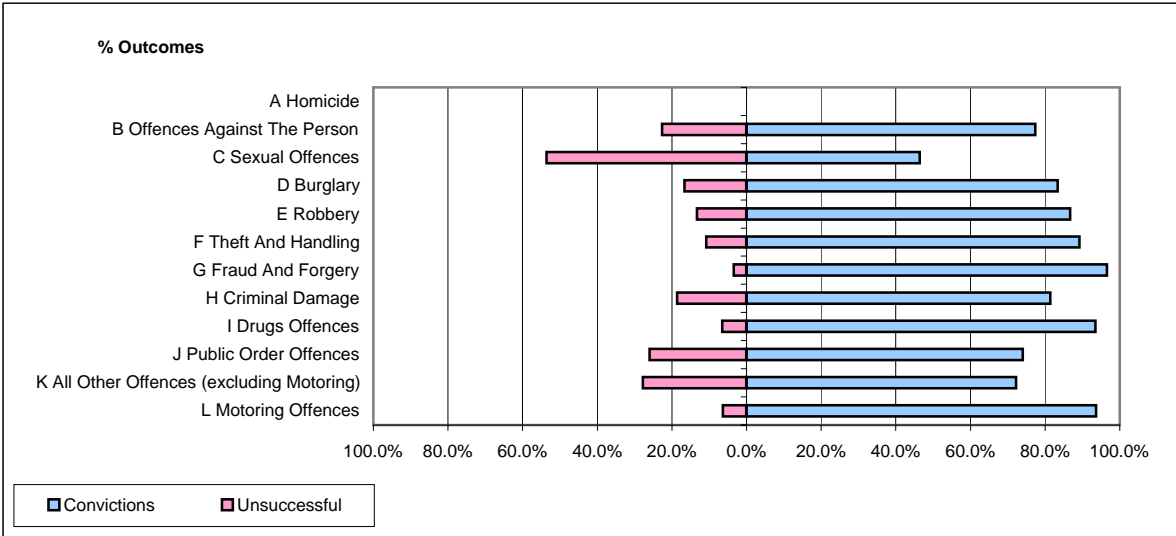


CPS OUTCOMES BY PRINCIPAL OFFENCE CATEGORY

July 2007

P20-Kent



| | Convictions | | Unsuccessful | |
|--|----------------------|--------------|----------------------|---------------|
| | Number of Defendants | % | Number of Defendants | % |
| A Homicide | 0 | 0 | 0 | 0 |
| B Offences Against The Person | 274 | 77.4% | 80 | 22.6% |
| C Sexual Offences | 13 | 46.4% | 15 | 53.6% |
| D Burglary | 70 | 83.3% | 14 | 16.7% |
| E Robbery | 13 | 86.7% | 2 | 13.3% |
| F Theft And Handling | 331 | 89.2% | 40 | 10.8% |
| G Fraud And Forgery | 28 | 96.6% | 1 | 3.4% |
| H Criminal Damage | 96 | 81.4% | 22 | 18.6% |
| I Drugs Offences | 72 | 93.5% | 5 | 6.5% |
| J Public Order Offences | 131 | 74.0% | 46 | 26.0% |
| K All Other Offences (excluding Motoring) | 78 | 72.2% | 30 | 27.8% |
| L Motoring Offences | 1,043 | 93.6% | 71 | 6.4% |
| Admin Finalisations | 0 | 0.0% | 32 | 100.0% |
| TOTAL | 2,149 | 85.7% | 358 | 14.3% |