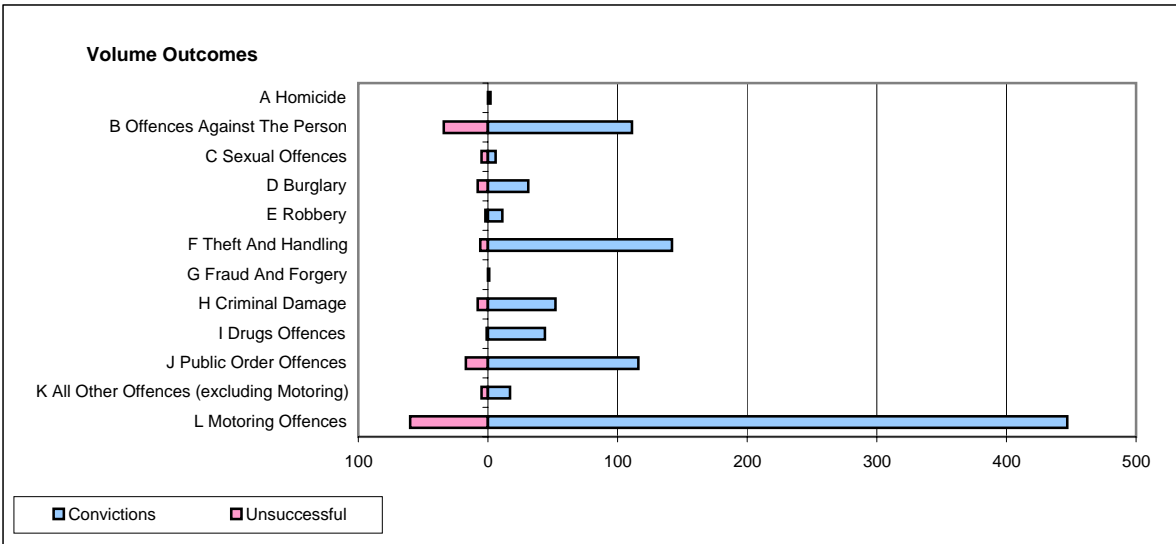
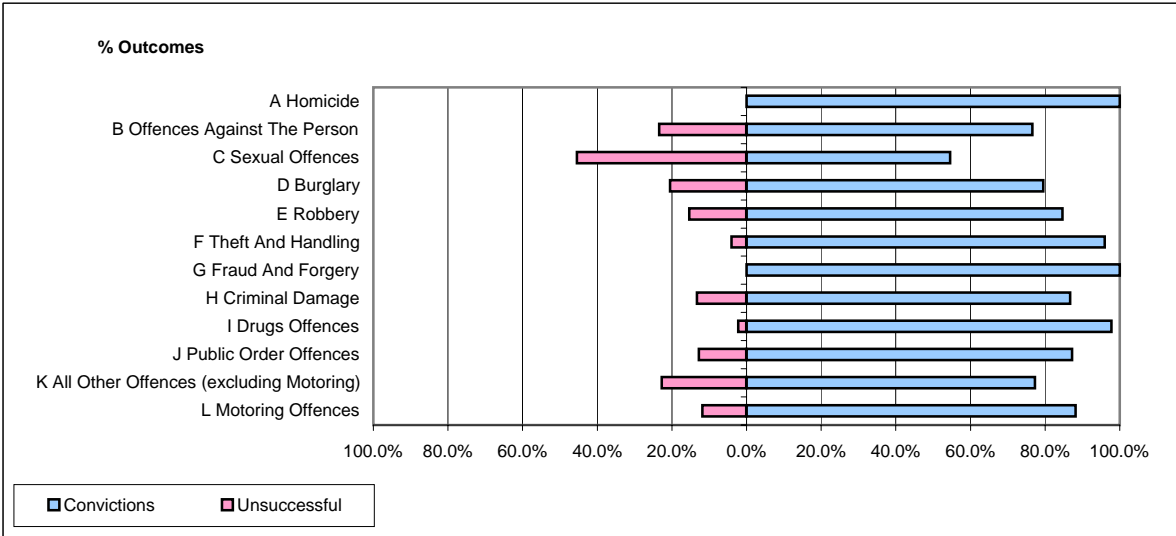


CPS OUTCOMES BY PRINCIPAL OFFENCE CATEGORY

July 2007

P16-Gwent



	Convictions		Unsuccessful	
	Number of Defendants	%	Number of Defendants	%
A Homicide	2	100.0%	0	0.0%
B Offences Against The Person	111	76.6%	34	23.4%
C Sexual Offences	6	54.5%	5	45.5%
D Burglary	31	79.5%	8	20.5%
E Robbery	11	84.6%	2	15.4%
F Theft And Handling	142	95.9%	6	4.1%
G Fraud And Forgery	1	100.0%	0	0.0%
H Criminal Damage	52	86.7%	8	13.3%
I Drugs Offences	44	97.8%	1	2.2%
J Public Order Offences	116	87.2%	17	12.8%
K All Other Offences (excluding Motoring)	17	77.3%	5	22.7%
L Motoring Offences	447	88.2%	60	11.8%
Admin Finalisations	0	0.0%	24	100.0%
TOTAL	980	85.2%	170	14.8%