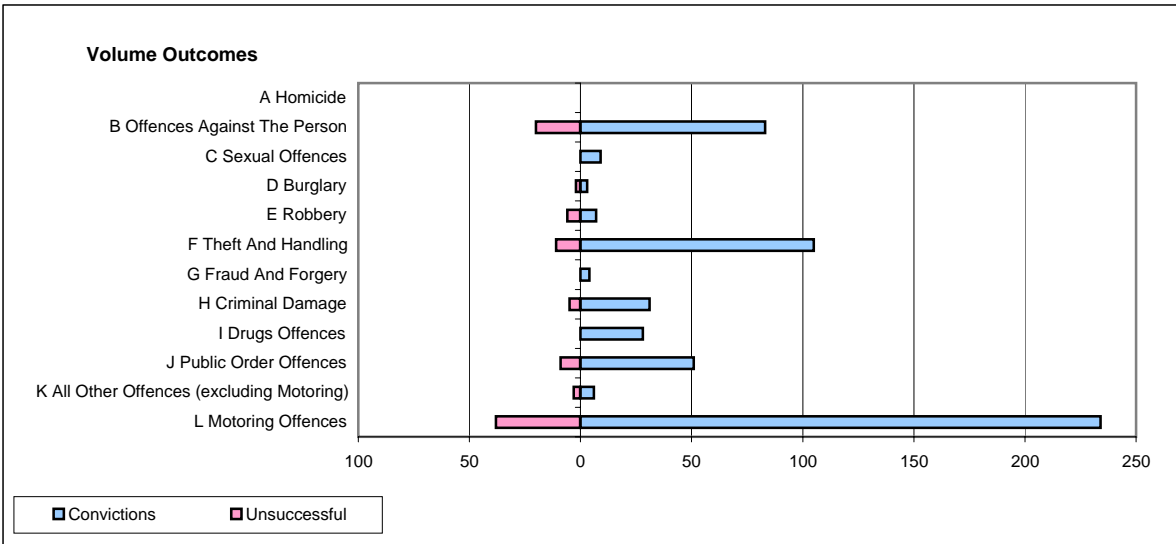
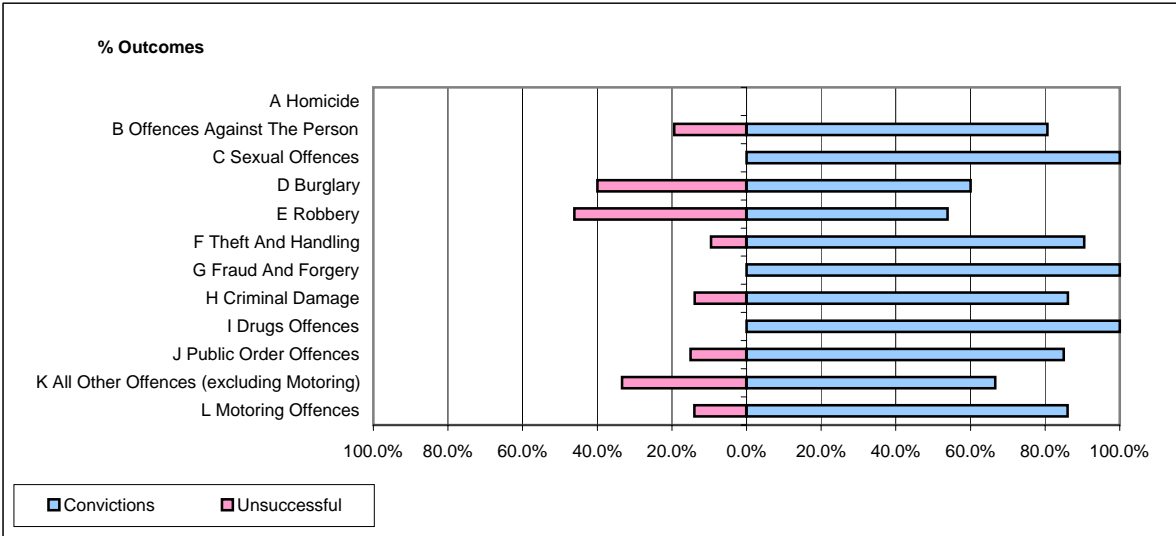


**CPS OUTCOMES BY PRINCIPAL OFFENCE CATEGORY**

**July 2007**

**P14-Gloucestershire**



	Convictions		Unsuccessful	
	Number of Defendants	%	Number of Defendants	%
<b>A Homicide</b>	<b>0</b>	<b>0</b>	<b>0</b>	<b>0</b>
<b>B Offences Against The Person</b>	<b>83</b>	<b>80.6%</b>	<b>20</b>	<b>19.4%</b>
<b>C Sexual Offences</b>	<b>9</b>	<b>100.0%</b>	<b>0</b>	<b>0.0%</b>
<b>D Burglary</b>	<b>3</b>	<b>60.0%</b>	<b>2</b>	<b>40.0%</b>
<b>E Robbery</b>	<b>7</b>	<b>53.8%</b>	<b>6</b>	<b>46.2%</b>
<b>F Theft And Handling</b>	<b>105</b>	<b>90.5%</b>	<b>11</b>	<b>9.5%</b>
<b>G Fraud And Forgery</b>	<b>4</b>	<b>100.0%</b>	<b>0</b>	<b>0.0%</b>
<b>H Criminal Damage</b>	<b>31</b>	<b>86.1%</b>	<b>5</b>	<b>13.9%</b>
<b>I Drugs Offences</b>	<b>28</b>	<b>100.0%</b>	<b>0</b>	<b>0.0%</b>
<b>J Public Order Offences</b>	<b>51</b>	<b>85.0%</b>	<b>9</b>	<b>15.0%</b>
<b>K All Other Offences (excluding Motoring)</b>	<b>6</b>	<b>66.7%</b>	<b>3</b>	<b>33.3%</b>
<b>L Motoring Offences</b>	<b>234</b>	<b>86.0%</b>	<b>38</b>	<b>14.0%</b>
<b>Admin Finalisations</b>	<b>0</b>	<b>0.0%</b>	<b>24</b>	<b>100.0%</b>
<b>TOTAL</b>	<b>561</b>	<b>82.6%</b>	<b>118</b>	<b>17.4%</b>