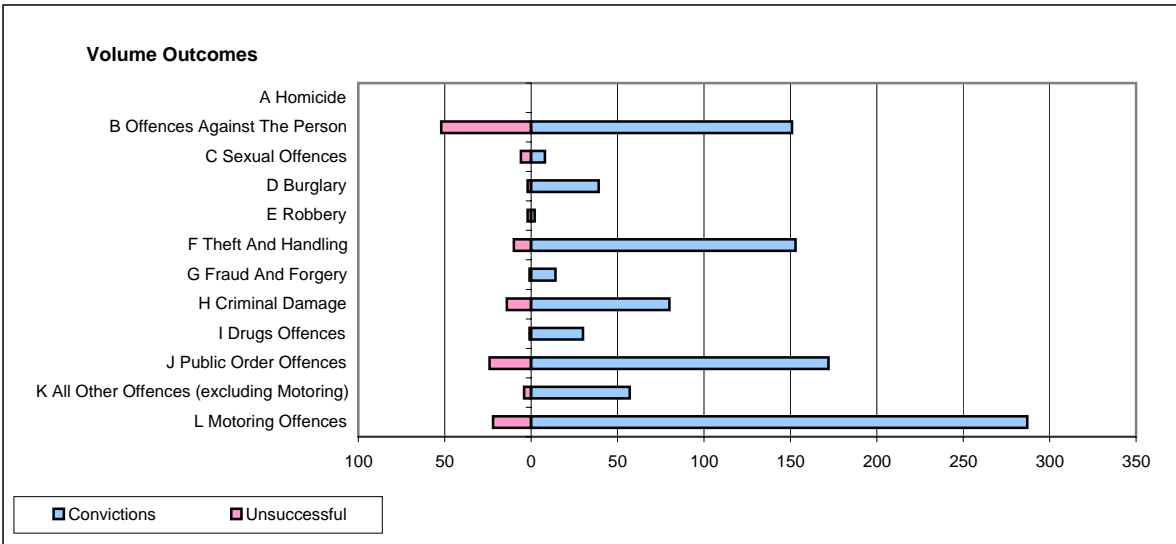
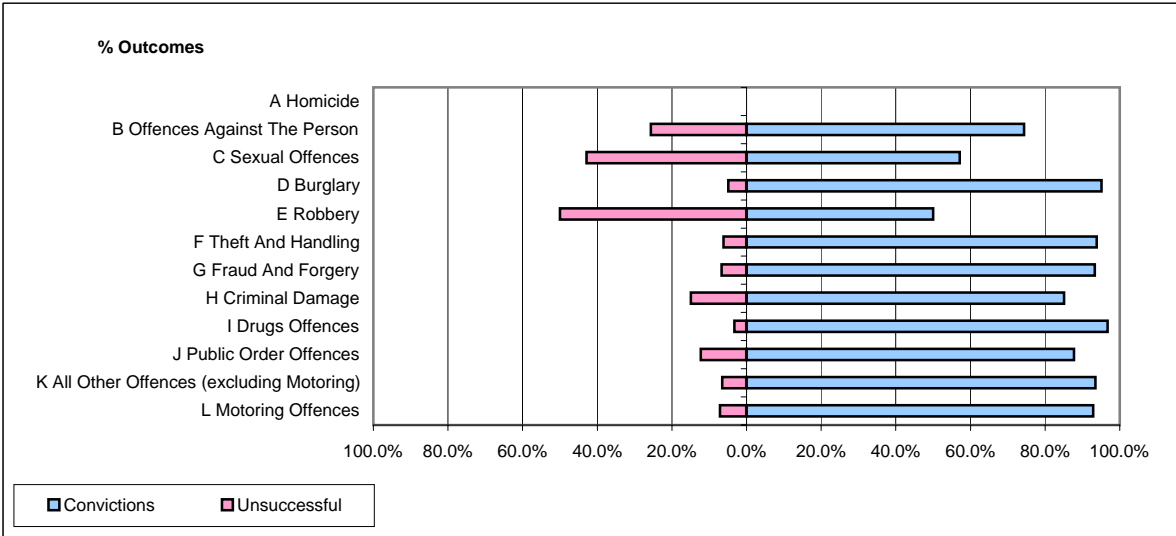


CPS OUTCOMES BY PRINCIPAL OFFENCE CATEGORY

July 2007

P11-Durham



	Convictions		Unsuccessful	
	Number of Defendants	%	Number of Defendants	%
A Homicide	0	0	0	0
B Offences Against The Person	151	74.4%	52	25.6%
C Sexual Offences	8	57.1%	6	42.9%
D Burglary	39	95.1%	2	4.9%
E Robbery	2	50.0%	2	50.0%
F Theft And Handling	153	93.9%	10	6.1%
G Fraud And Forgery	14	93.3%	1	6.7%
H Criminal Damage	80	85.1%	14	14.9%
I Drugs Offences	30	96.8%	1	3.2%
J Public Order Offences	172	87.8%	24	12.2%
K All Other Offences (excluding Motoring)	57	93.4%	4	6.6%
L Motoring Offences	287	92.9%	22	7.1%
Admin Finalisations	0	0.0%	4	100.0%
TOTAL	993	87.5%	142	12.5%