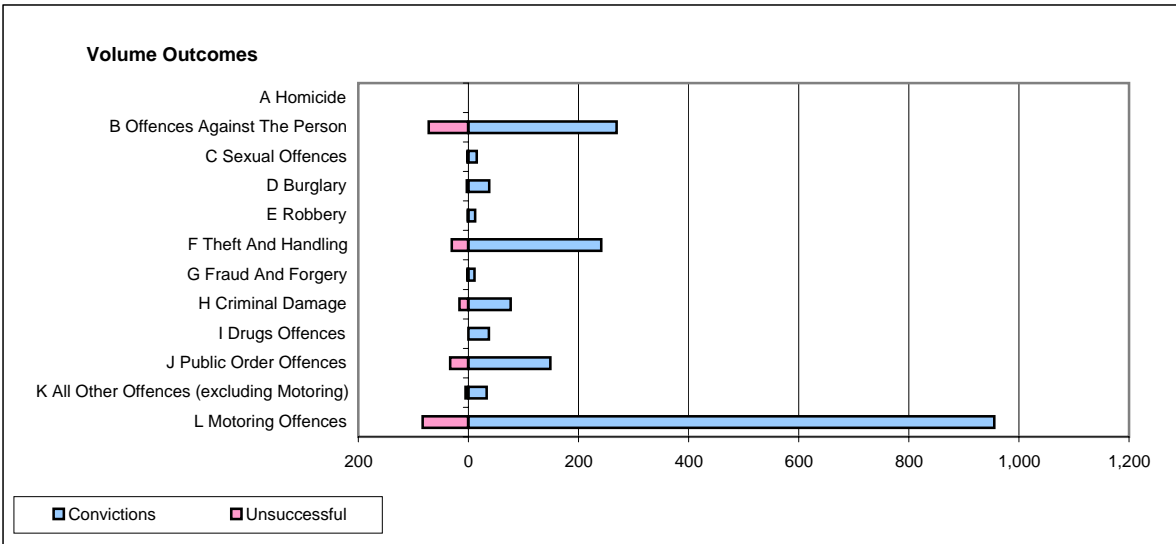
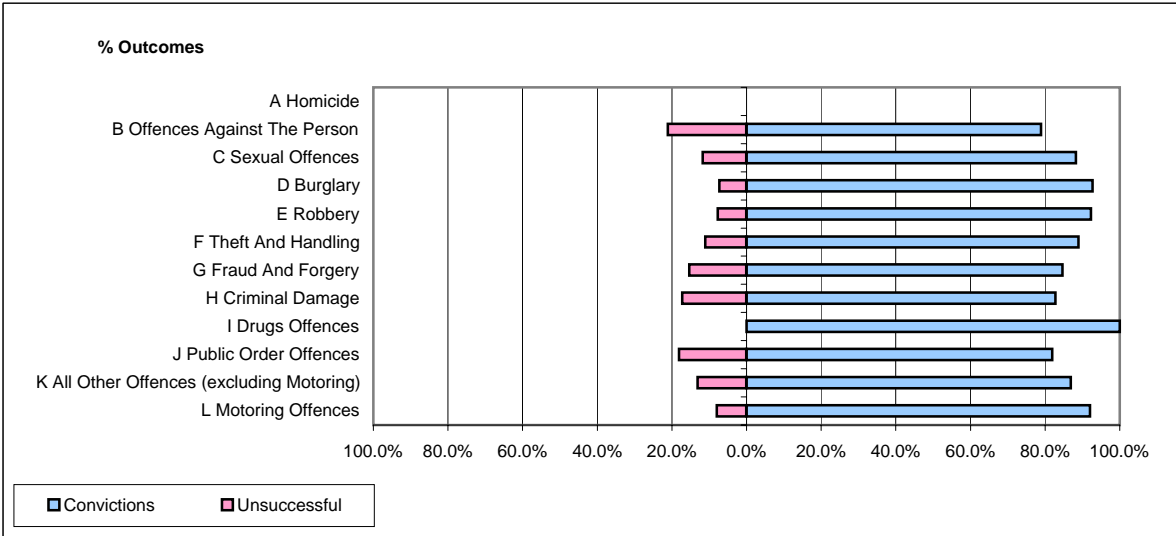


CPS OUTCOMES BY PRINCIPAL OFFENCE CATEGORY

July 2007

P04-Cheshire



	Convictions		Unsuccessful	
	Number of Defendants	%	Number of Defendants	%
A Homicide	0	0	0	0
B Offences Against The Person	269	78.9%	72	21.1%
C Sexual Offences	15	88.2%	2	11.8%
D Burglary	38	92.7%	3	7.3%
E Robbery	12	92.3%	1	7.7%
F Theft And Handling	241	88.9%	30	11.1%
G Fraud And Forgery	11	84.6%	2	15.4%
H Criminal Damage	77	82.8%	16	17.2%
I Drugs Offences	37	100.0%	0	0.0%
J Public Order Offences	149	81.9%	33	18.1%
K All Other Offences (excluding Motoring)	33	86.8%	5	13.2%
L Motoring Offences	955	92.0%	83	8.0%
Admin Finalisations	0	0.0%	16	100.0%
TOTAL	1,837	87.5%	263	12.5%