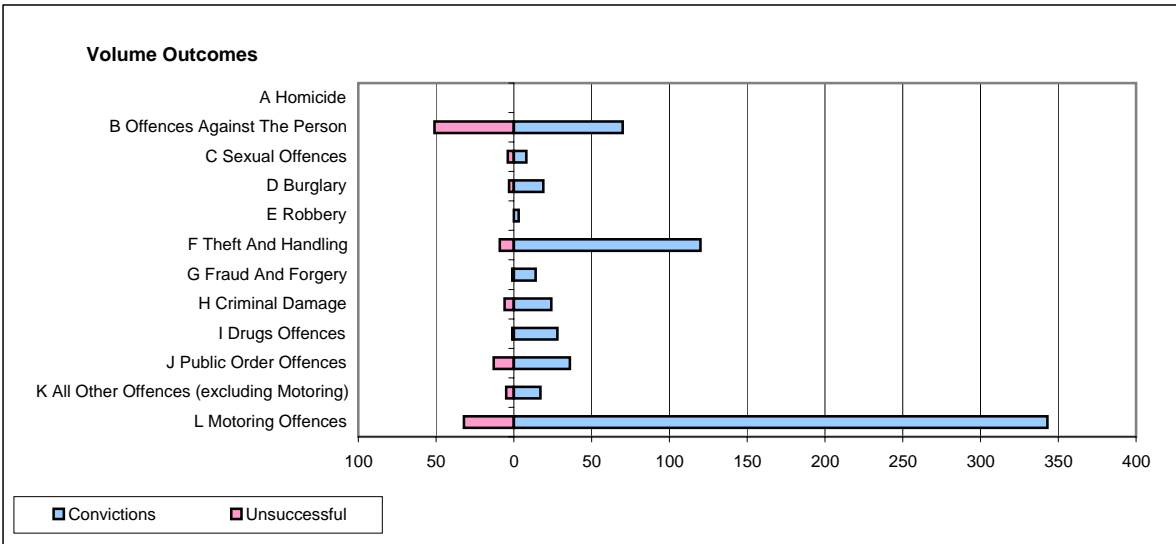
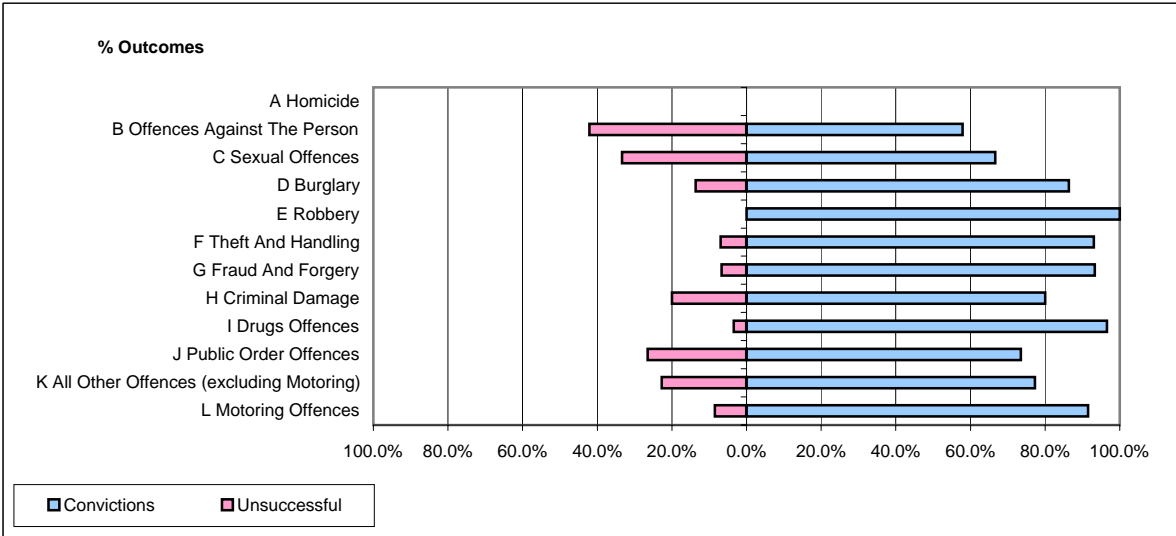


**CPS OUTCOMES BY PRINCIPAL OFFENCE CATEGORY**

**July 2007**

**P02-Bedfordshire**



	Convictions		Unsuccessful	
	Number of Defendants	%	Number of Defendants	%
<b>A Homicide</b>	<b>0</b>	<b>0</b>	<b>0</b>	<b>0</b>
<b>B Offences Against The Person</b>	<b>70</b>	<b>57.9%</b>	<b>51</b>	<b>42.1%</b>
<b>C Sexual Offences</b>	<b>8</b>	<b>66.7%</b>	<b>4</b>	<b>33.3%</b>
<b>D Burglary</b>	<b>19</b>	<b>86.4%</b>	<b>3</b>	<b>13.6%</b>
<b>E Robbery</b>	<b>3</b>	<b>100.0%</b>	<b>0</b>	<b>0.0%</b>
<b>F Theft And Handling</b>	<b>120</b>	<b>93.0%</b>	<b>9</b>	<b>7.0%</b>
<b>G Fraud And Forgery</b>	<b>14</b>	<b>93.3%</b>	<b>1</b>	<b>6.7%</b>
<b>H Criminal Damage</b>	<b>24</b>	<b>80.0%</b>	<b>6</b>	<b>20.0%</b>
<b>I Drugs Offences</b>	<b>28</b>	<b>96.6%</b>	<b>1</b>	<b>3.4%</b>
<b>J Public Order Offences</b>	<b>36</b>	<b>73.5%</b>	<b>13</b>	<b>26.5%</b>
<b>K All Other Offences (excluding Motoring)</b>	<b>17</b>	<b>77.3%</b>	<b>5</b>	<b>22.7%</b>
<b>L Motoring Offences</b>	<b>343</b>	<b>91.5%</b>	<b>32</b>	<b>8.5%</b>
<b>Admin Finalisations</b>	<b>0</b>	<b>0.0%</b>	<b>24</b>	<b>100.0%</b>
<b>TOTAL</b>	<b>682</b>	<b>82.1%</b>	<b>149</b>	<b>17.9%</b>