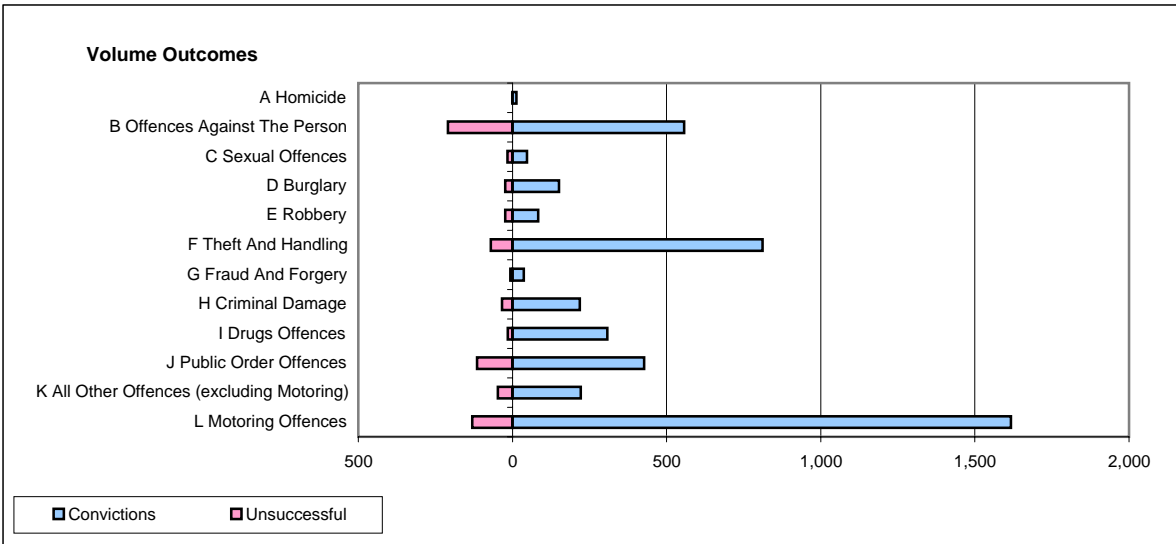
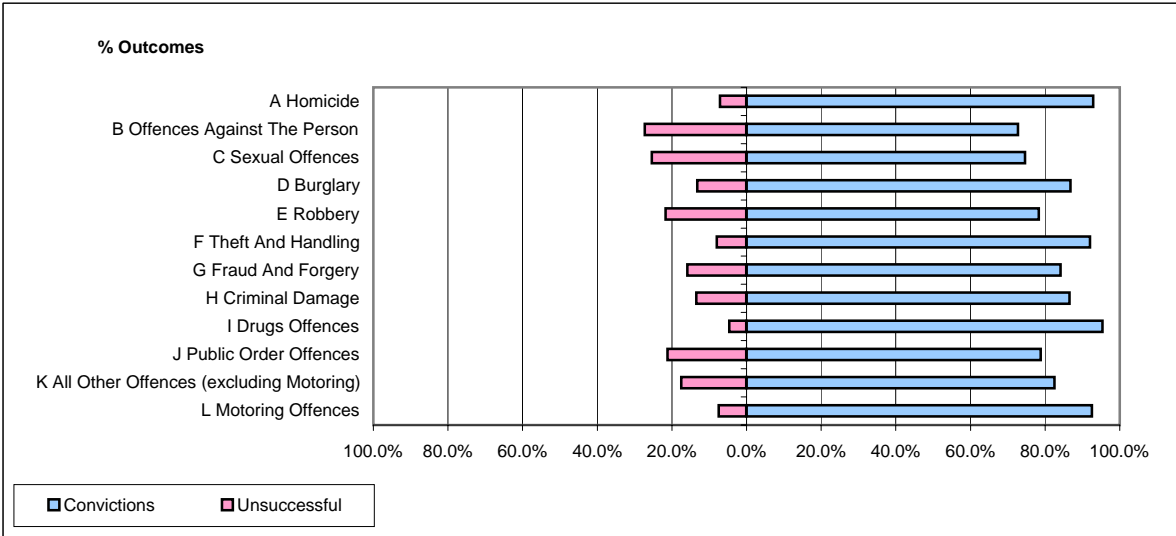


CPS OUTCOMES BY PRINCIPAL OFFENCE CATEGORY

June 2007

P41-WestMidlands



	Convictions		Unsuccessful	
	Number of Defendants	%	Number of Defendants	%
A Homicide	13	92.9%	1	7.1%
B Offences Against The Person	557	72.7%	209	27.3%
C Sexual Offences	47	74.6%	16	25.4%
D Burglary	151	86.8%	23	13.2%
E Robbery	83	78.3%	23	21.7%
F Theft And Handling	811	92.1%	70	7.9%
G Fraud And Forgery	37	84.1%	7	15.9%
H Criminal Damage	218	86.5%	34	13.5%
I Drugs Offences	308	95.4%	15	4.6%
J Public Order Offences	427	78.8%	115	21.2%
K All Other Offences (excluding Motoring)	222	82.5%	47	17.5%
L Motoring Offences	1,617	92.6%	130	7.4%
Admin Finalisations	0	0.0%	57	100.0%
TOTAL	4,491	85.7%	747	14.3%