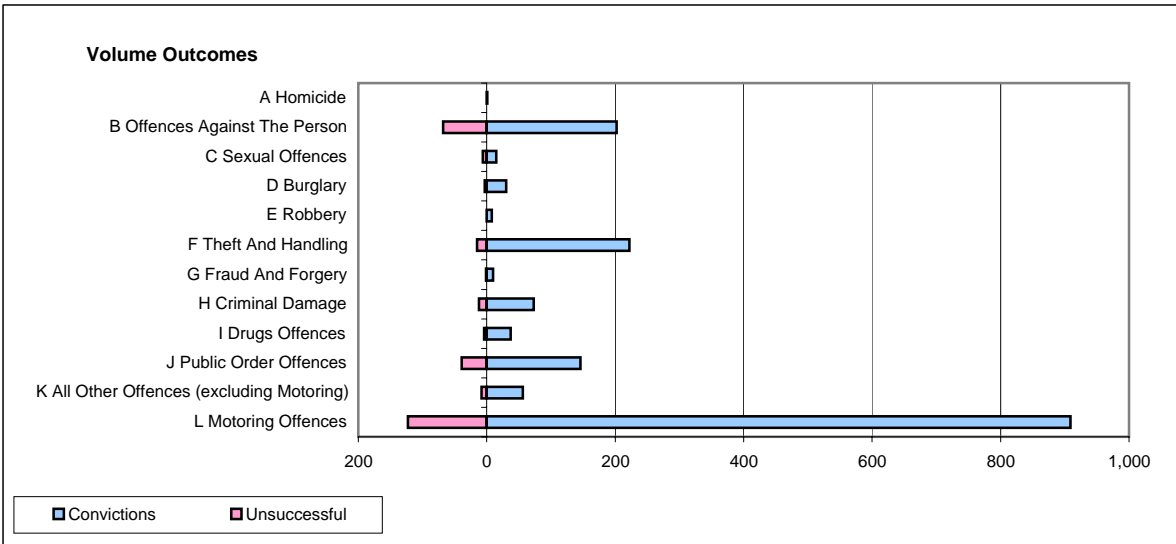
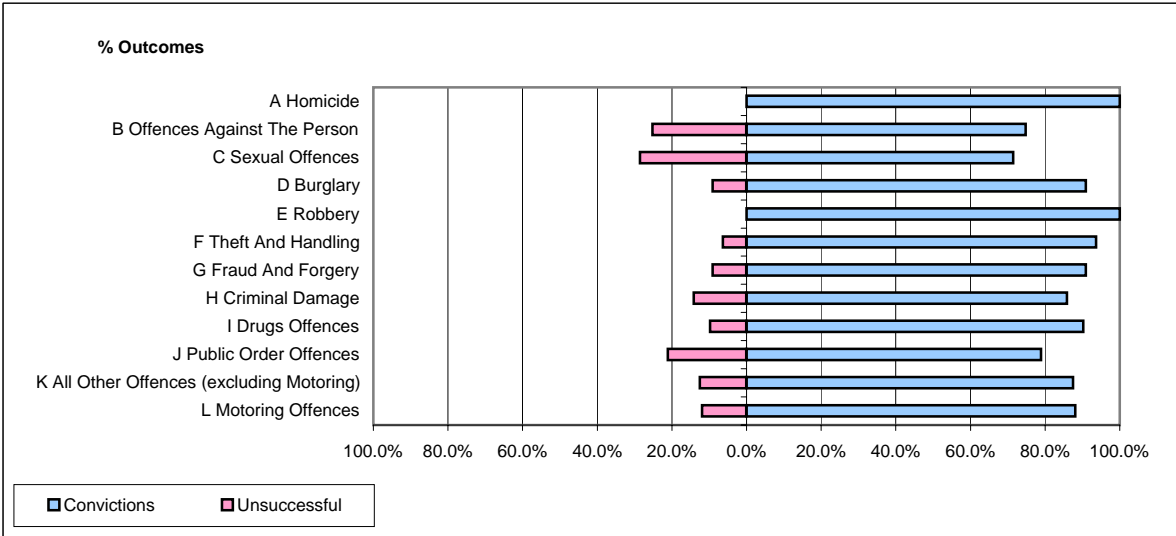


CPS OUTCOMES BY PRINCIPAL OFFENCE CATEGORY

June 2007

P40-WestMercia



	Convictions		Unsuccessful	
	Number of Defendants	%	Number of Defendants	%
A Homicide	1	100.0%	0	0.0%
B Offences Against The Person	202	74.8%	68	25.2%
C Sexual Offences	15	71.4%	6	28.6%
D Burglary	30	90.9%	3	9.1%
E Robbery	8	100.0%	0	0.0%
F Theft And Handling	222	93.7%	15	6.3%
G Fraud And Forgery	10	90.9%	1	9.1%
H Criminal Damage	73	85.9%	12	14.1%
I Drugs Offences	37	90.2%	4	9.8%
J Public Order Offences	146	78.9%	39	21.1%
K All Other Offences (excluding Motoring)	56	87.5%	8	12.5%
L Motoring Offences	909	88.1%	123	11.9%
Admin Finalisations	0	0.0%	30	100.0%
TOTAL	1,709	84.7%	309	15.3%