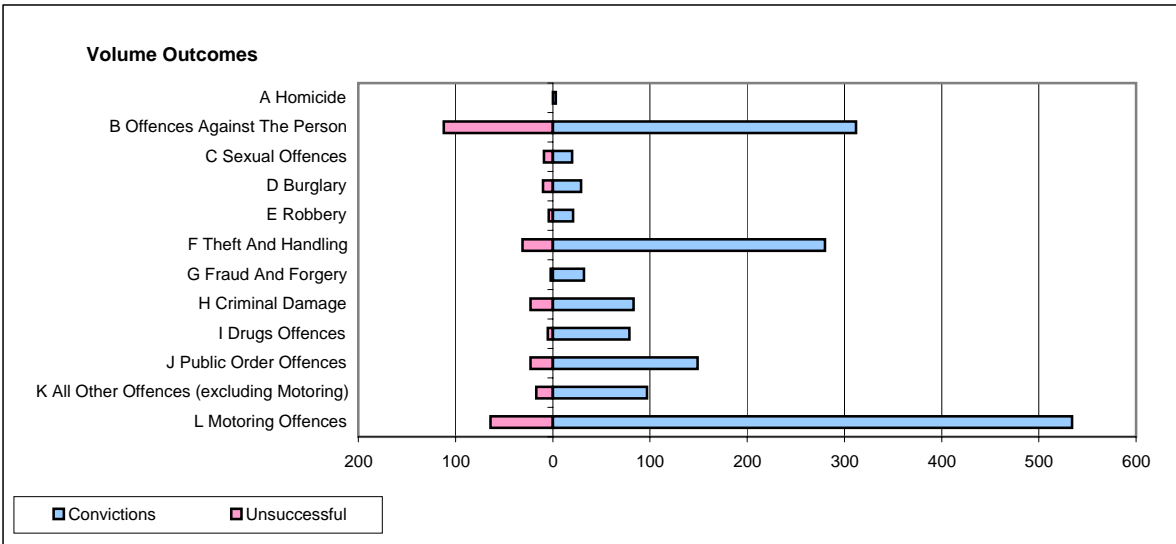
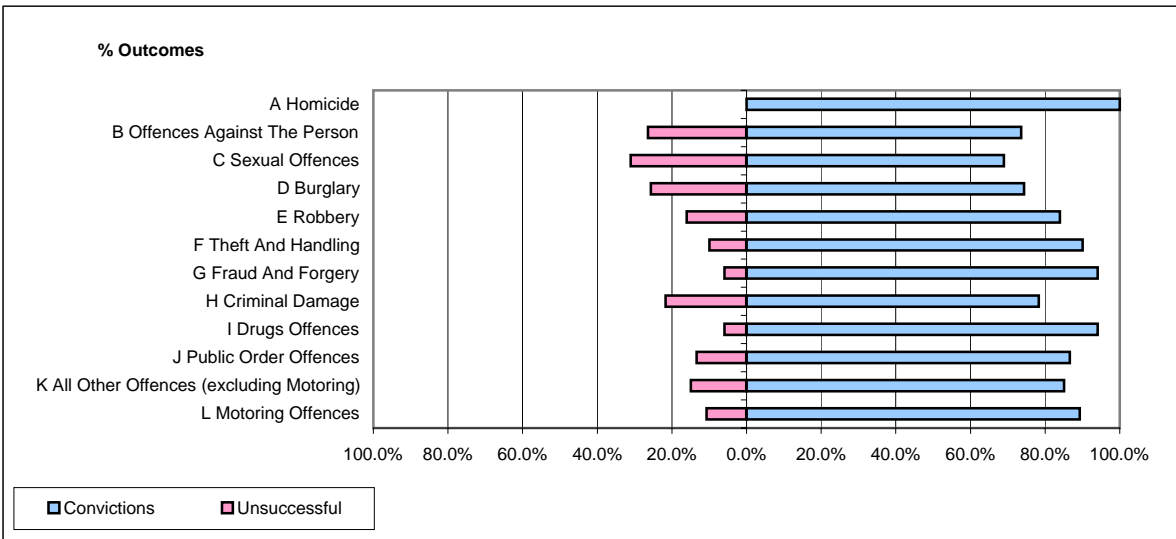


CPS OUTCOMES BY PRINCIPAL OFFENCE CATEGORY

June 2007

P37-Sussex



	Convictions		Unsuccessful	
	Number of Defendants	%	Number of Defendants	%
A Homicide	3	100.0%	0	0.0%
B Offences Against The Person	312	73.6%	112	26.4%
C Sexual Offences	20	69.0%	9	31.0%
D Burglary	29	74.4%	10	25.6%
E Robbery	21	84.0%	4	16.0%
F Theft And Handling	280	90.0%	31	10.0%
G Fraud And Forgery	32	94.1%	2	5.9%
H Criminal Damage	83	78.3%	23	21.7%
I Drugs Offences	79	94.0%	5	6.0%
J Public Order Offences	149	86.6%	23	13.4%
K All Other Offences (excluding Motoring)	97	85.1%	17	14.9%
L Motoring Offences	534	89.3%	64	10.7%
Admin Finalisations	0	0.0%	45	100.0%
TOTAL	1,639	82.6%	345	17.4%