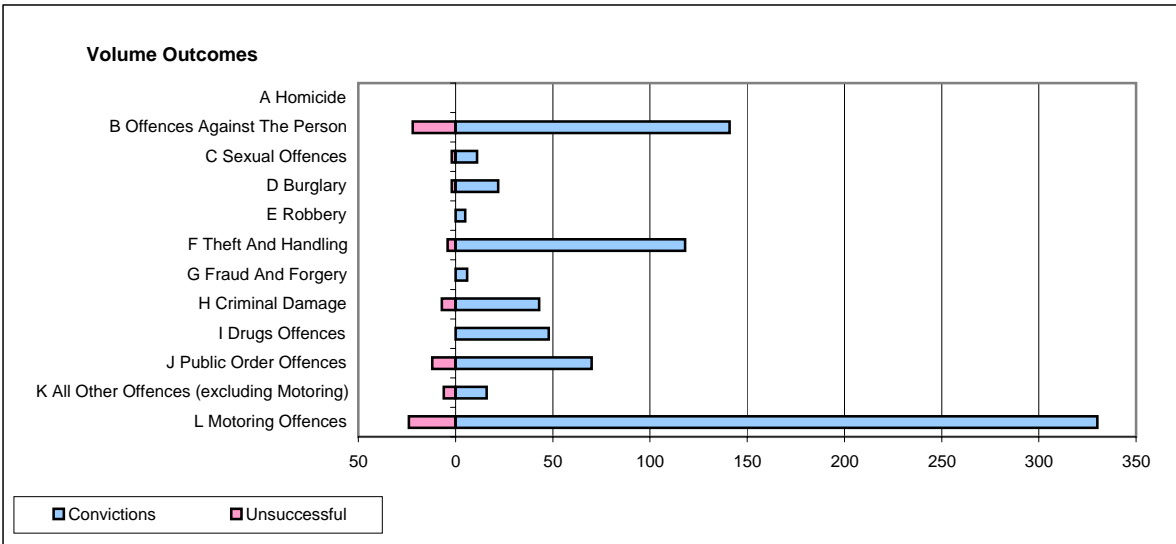
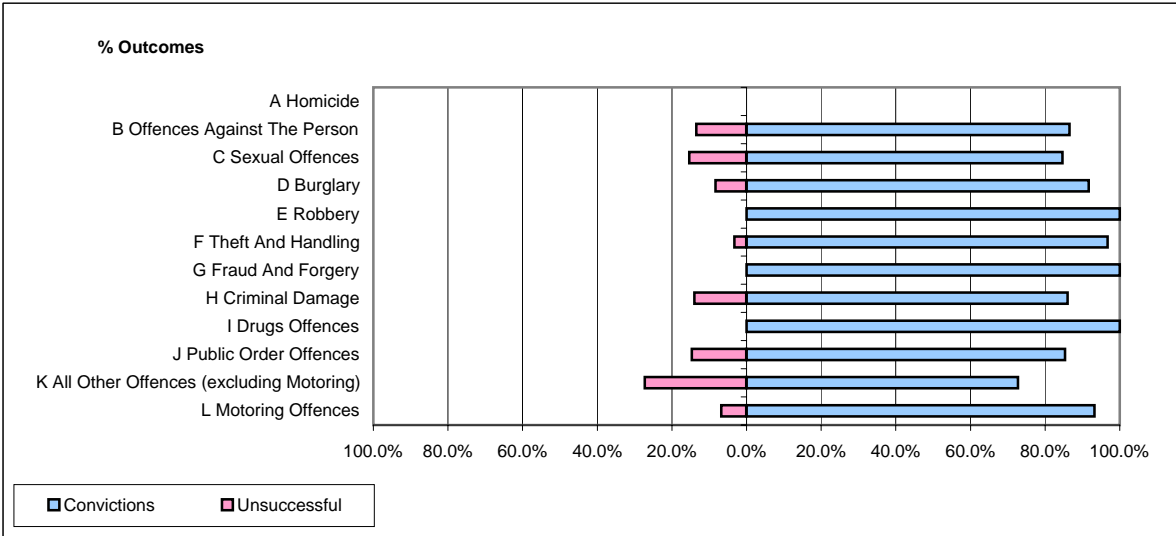


**CPS OUTCOMES BY PRINCIPAL OFFENCE CATEGORY**

**June 2007**

**P35-Suffolk**



	Convictions		Unsuccessful	
	Number of Defendants	%	Number of Defendants	%
<b>A Homicide</b>	<b>0</b>	<b>#DIV/0!</b>	<b>0</b>	<b>#DIV/0!</b>
<b>B Offences Against The Person</b>	<b>141</b>	<b>86.5%</b>	<b>22</b>	<b>13.5%</b>
<b>C Sexual Offences</b>	<b>11</b>	<b>84.6%</b>	<b>2</b>	<b>15.4%</b>
<b>D Burglary</b>	<b>22</b>	<b>91.7%</b>	<b>2</b>	<b>8.3%</b>
<b>E Robbery</b>	<b>5</b>	<b>100.0%</b>	<b>0</b>	<b>0.0%</b>
<b>F Theft And Handling</b>	<b>118</b>	<b>96.7%</b>	<b>4</b>	<b>3.3%</b>
<b>G Fraud And Forgery</b>	<b>6</b>	<b>100.0%</b>	<b>0</b>	<b>0.0%</b>
<b>H Criminal Damage</b>	<b>43</b>	<b>86.0%</b>	<b>7</b>	<b>14.0%</b>
<b>I Drugs Offences</b>	<b>48</b>	<b>100.0%</b>	<b>0</b>	<b>0.0%</b>
<b>J Public Order Offences</b>	<b>70</b>	<b>85.4%</b>	<b>12</b>	<b>14.6%</b>
<b>K All Other Offences (excluding Motoring)</b>	<b>16</b>	<b>72.7%</b>	<b>6</b>	<b>27.3%</b>
<b>L Motoring Offences</b>	<b>330</b>	<b>93.2%</b>	<b>24</b>	<b>6.8%</b>
<b>Admin Finalisations</b>	<b>0</b>	<b>0.0%</b>	<b>20</b>	<b>100.0%</b>
<b>TOTAL</b>	<b>810</b>	<b>89.1%</b>	<b>99</b>	<b>10.9%</b>