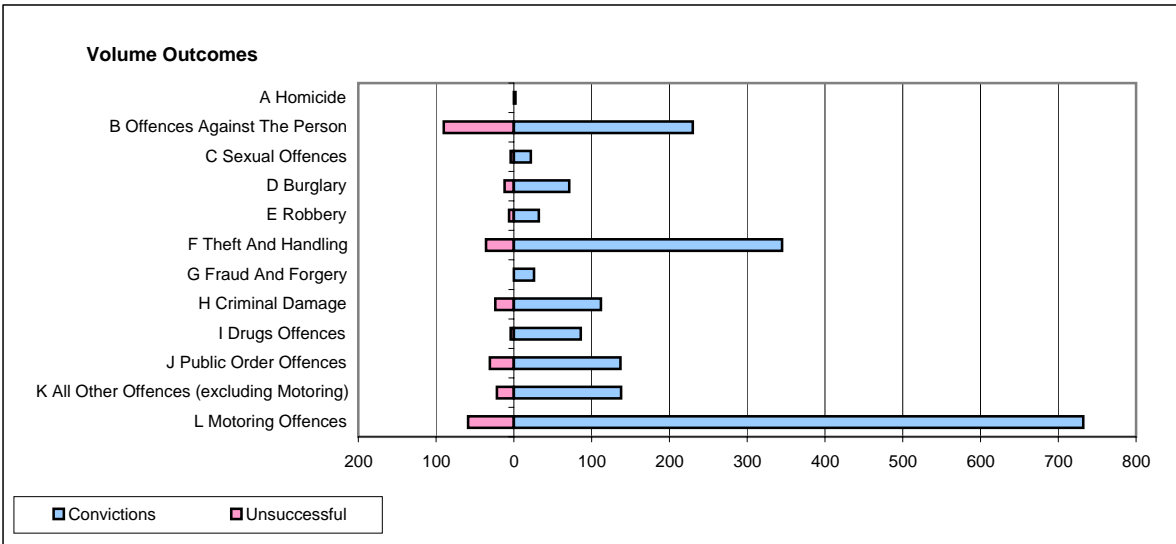
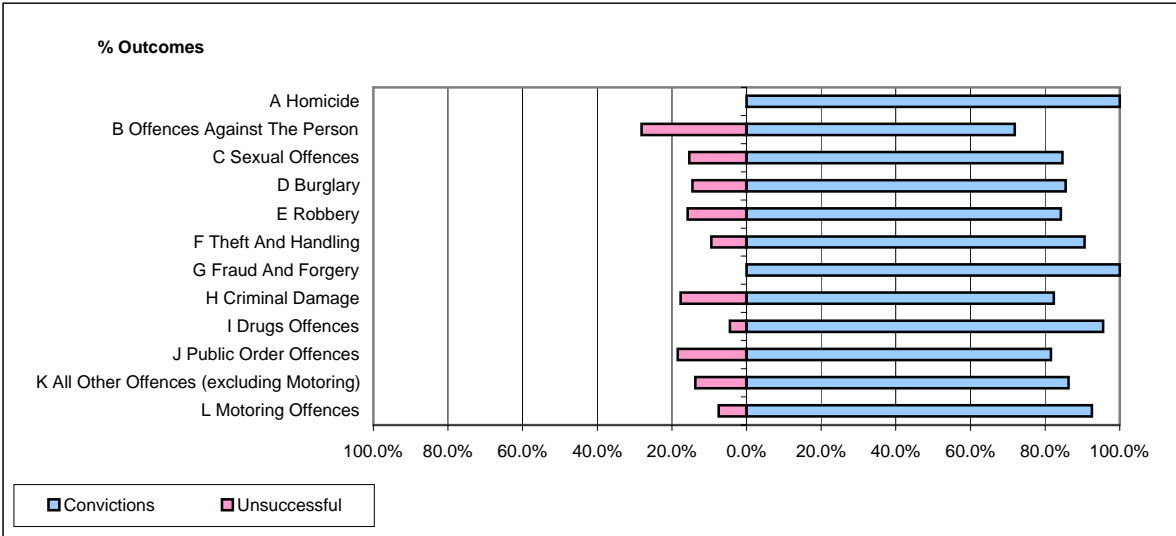


**CPS OUTCOMES BY PRINCIPAL OFFENCE CATEGORY**

**June 2007**

**P33-SouthYorkshire**



	Convictions		Unsuccessful	
	Number of Defendants	%	Number of Defendants	%
<b>A Homicide</b>	<b>2</b>	<b>100.0%</b>	<b>0</b>	<b>0.0%</b>
<b>B Offences Against The Person</b>	<b>230</b>	<b>71.9%</b>	<b>90</b>	<b>28.1%</b>
<b>C Sexual Offences</b>	<b>22</b>	<b>84.6%</b>	<b>4</b>	<b>15.4%</b>
<b>D Burglary</b>	<b>71</b>	<b>85.5%</b>	<b>12</b>	<b>14.5%</b>
<b>E Robbery</b>	<b>32</b>	<b>84.2%</b>	<b>6</b>	<b>15.8%</b>
<b>F Theft And Handling</b>	<b>345</b>	<b>90.6%</b>	<b>36</b>	<b>9.4%</b>
<b>G Fraud And Forgery</b>	<b>26</b>	<b>100.0%</b>	<b>0</b>	<b>0.0%</b>
<b>H Criminal Damage</b>	<b>112</b>	<b>82.4%</b>	<b>24</b>	<b>17.6%</b>
<b>I Drugs Offences</b>	<b>86</b>	<b>95.6%</b>	<b>4</b>	<b>4.4%</b>
<b>J Public Order Offences</b>	<b>137</b>	<b>81.5%</b>	<b>31</b>	<b>18.5%</b>
<b>K All Other Offences (excluding Motoring)</b>	<b>138</b>	<b>86.3%</b>	<b>22</b>	<b>13.8%</b>
<b>L Motoring Offences</b>	<b>732</b>	<b>92.5%</b>	<b>59</b>	<b>7.5%</b>
<b>Admin Finalisations</b>	<b>0</b>	<b>0.0%</b>	<b>21</b>	<b>100.0%</b>
<b>TOTAL</b>	<b>1,933</b>	<b>86.2%</b>	<b>309</b>	<b>13.8%</b>