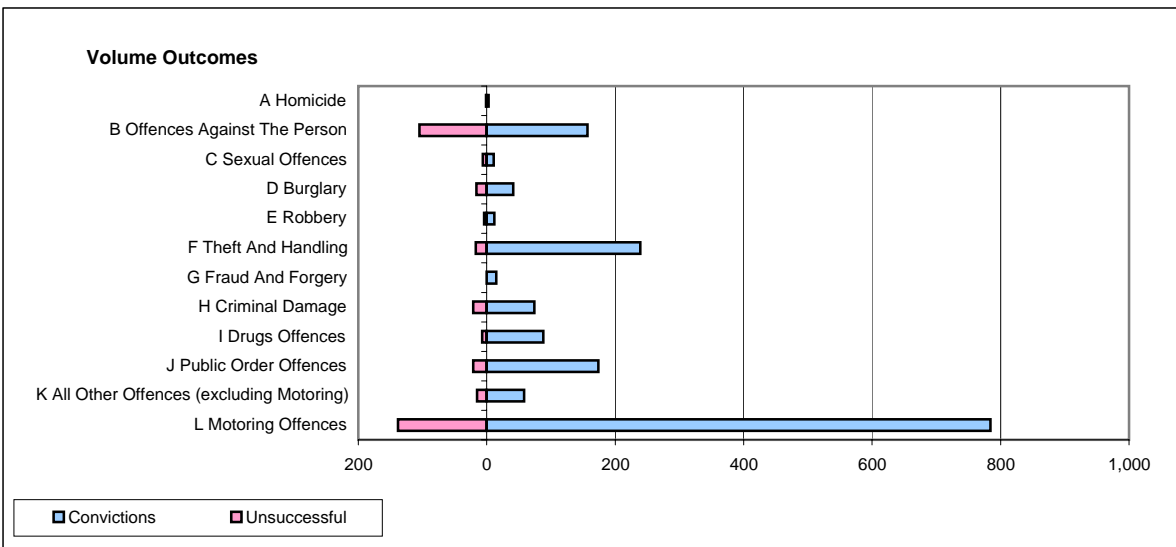
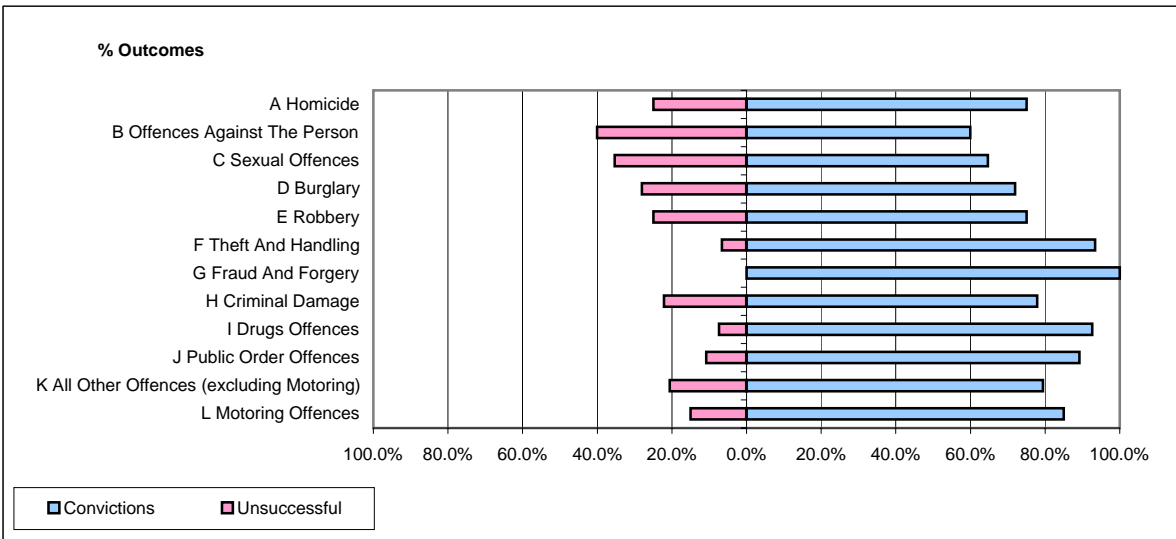


CPS OUTCOMES BY PRINCIPAL OFFENCE CATEGORY

June 2007

P32-SouthWales



	Convictions		Unsuccessful	
	Number of Defendants	%	Number of Defendants	%
A Homicide	3	75.0%	1	25.0%
B Offences Against The Person	157	59.9%	105	40.1%
C Sexual Offences	11	64.7%	6	35.3%
D Burglary	41	71.9%	16	28.1%
E Robbery	12	75.0%	4	25.0%
F Theft And Handling	239	93.4%	17	6.6%
G Fraud And Forgery	15	100.0%	0	0.0%
H Criminal Damage	74	77.9%	21	22.1%
I Drugs Offences	88	92.6%	7	7.4%
J Public Order Offences	174	89.2%	21	10.8%
K All Other Offences (excluding Motoring)	58	79.5%	15	20.5%
L Motoring Offences	784	85.0%	138	15.0%
Admin Finalisations	0	0.0%	84	100.0%
TOTAL	1,656	79.2%	435	20.8%