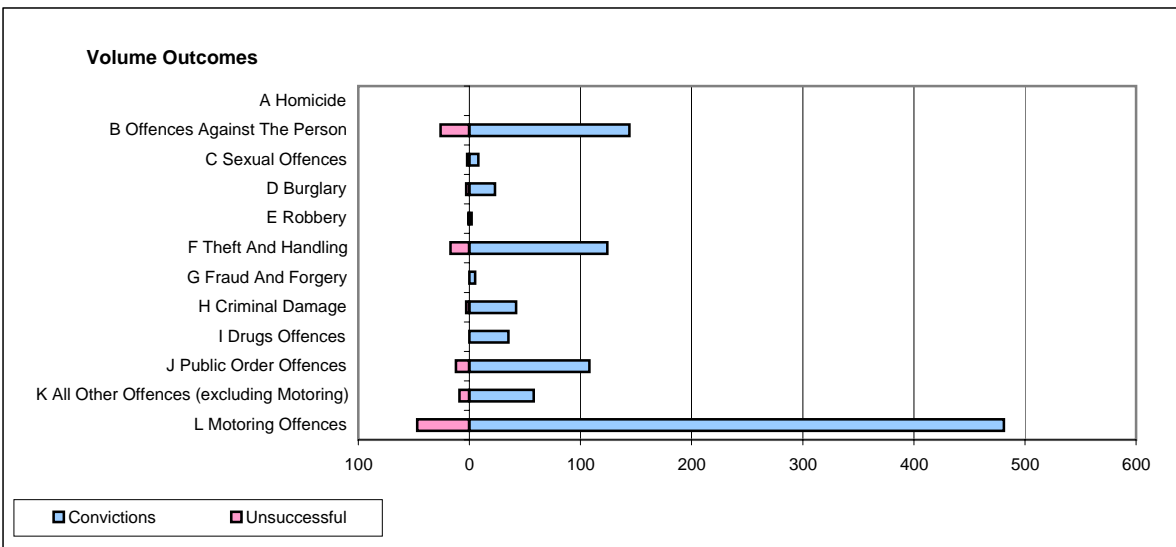
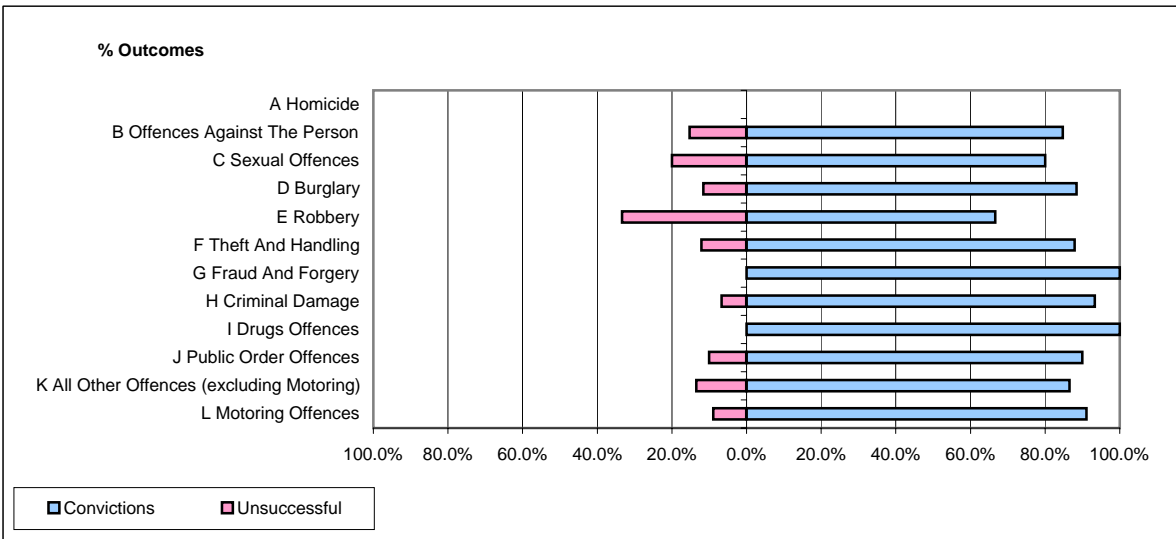


CPS OUTCOMES BY PRINCIPAL OFFENCE CATEGORY

June 2007

P29-NorthWales



	Convictions		Unsuccessful	
	Number of Defendants	%	Number of Defendants	%
A Homicide	0	#DIV/0!	0	#DIV/0!
B Offences Against The Person	144	84.7%	26	15.3%
C Sexual Offences	8	80.0%	2	20.0%
D Burglary	23	88.5%	3	11.5%
E Robbery	2	66.7%	1	33.3%
F Theft And Handling	124	87.9%	17	12.1%
G Fraud And Forgery	5	100.0%	0	0.0%
H Criminal Damage	42	93.3%	3	6.7%
I Drugs Offences	35	100.0%	0	0.0%
J Public Order Offences	108	90.0%	12	10.0%
K All Other Offences (excluding Motoring)	58	86.6%	9	13.4%
L Motoring Offences	481	91.1%	47	8.9%
Admin Finalisations	0	0.0%	14	100.0%
TOTAL	1,030	88.5%	134	11.5%