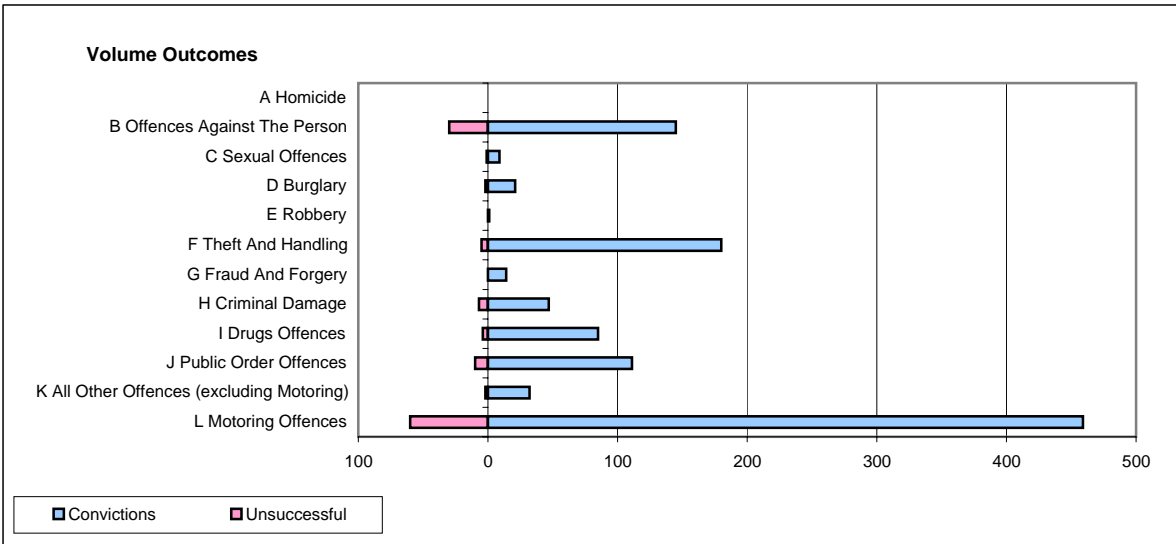
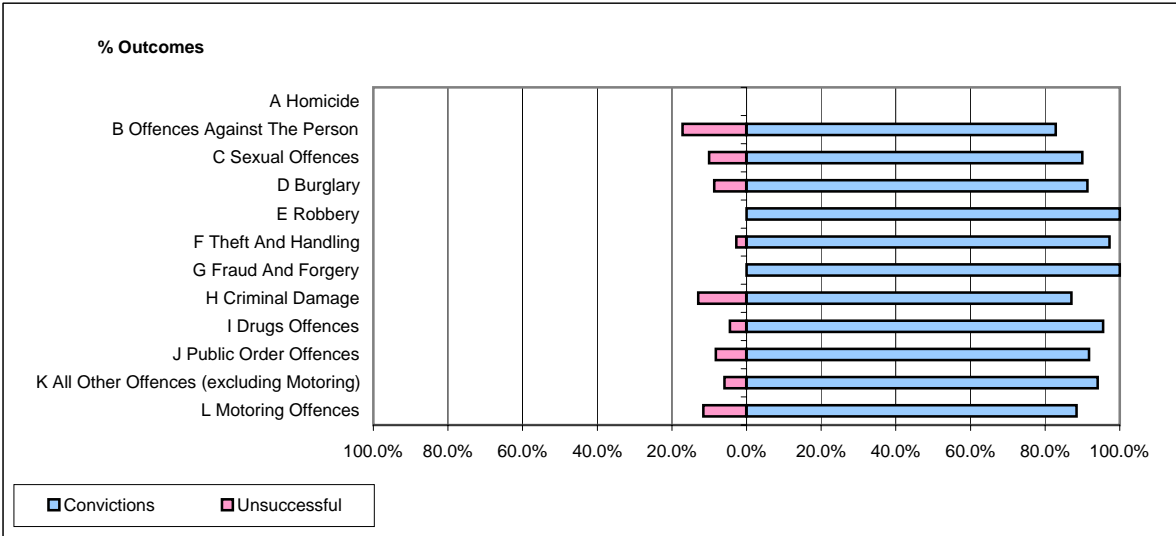


CPS OUTCOMES BY PRINCIPAL OFFENCE CATEGORY

June 2007

P26-Norfolk



	Convictions		Unsuccessful	
	Number of Defendants	%	Number of Defendants	%
A Homicide	0	#DIV/0!	0	#DIV/0!
B Offences Against The Person	145	82.9%	30	17.1%
C Sexual Offences	9	90.0%	1	10.0%
D Burglary	21	91.3%	2	8.7%
E Robbery	1	100.0%	0	0.0%
F Theft And Handling	180	97.3%	5	2.7%
G Fraud And Forgery	14	100.0%	0	0.0%
H Criminal Damage	47	87.0%	7	13.0%
I Drugs Offences	85	95.5%	4	4.5%
J Public Order Offences	111	91.7%	10	8.3%
K All Other Offences (excluding Motoring)	32	94.1%	2	5.9%
L Motoring Offences	459	88.4%	60	11.6%
Admin Finalisations	0	0.0%	27	100.0%
TOTAL	1,104	88.2%	148	11.8%