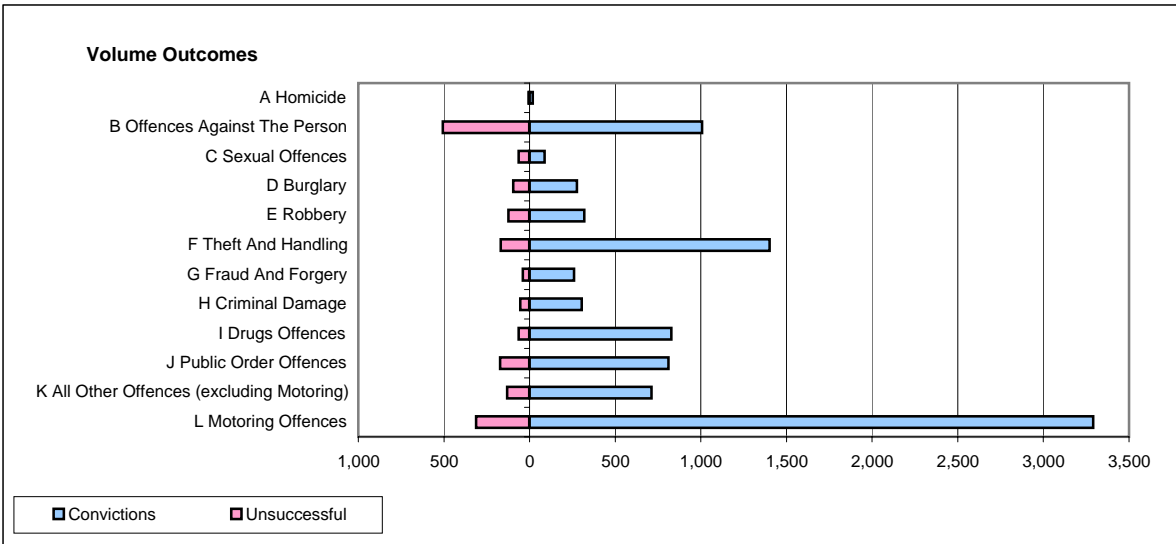
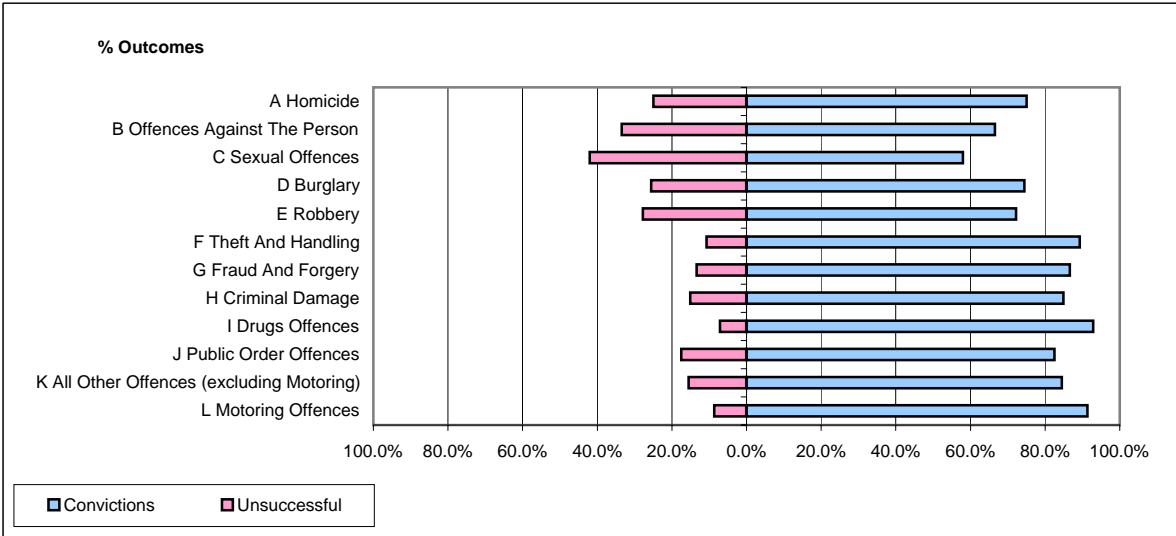


CPS OUTCOMES BY PRINCIPAL OFFENCE CATEGORY

June 2007

P25-Metropolitan&City



	Convictions		Unsuccessful	
	Number of Defendants	%	Number of Defendants	%
A Homicide	18	75.0%	6	25.0%
B Offences Against The Person	1,007	66.6%	506	33.4%
C Sexual Offences	87	58.0%	63	42.0%
D Burglary	277	74.5%	95	25.5%
E Robbery	319	72.2%	123	27.8%
F Theft And Handling	1,401	89.3%	168	10.7%
G Fraud And Forgery	259	86.6%	40	13.4%
H Criminal Damage	304	84.9%	54	15.1%
I Drugs Offences	827	92.9%	63	7.1%
J Public Order Offences	810	82.5%	172	17.5%
K All Other Offences (excluding Motoring)	712	84.5%	131	15.5%
L Motoring Offences	3,290	91.3%	313	8.7%
Admin Finalisations	0	0.0%	489	100.0%
TOTAL	9,311	80.7%	2,223	19.3%