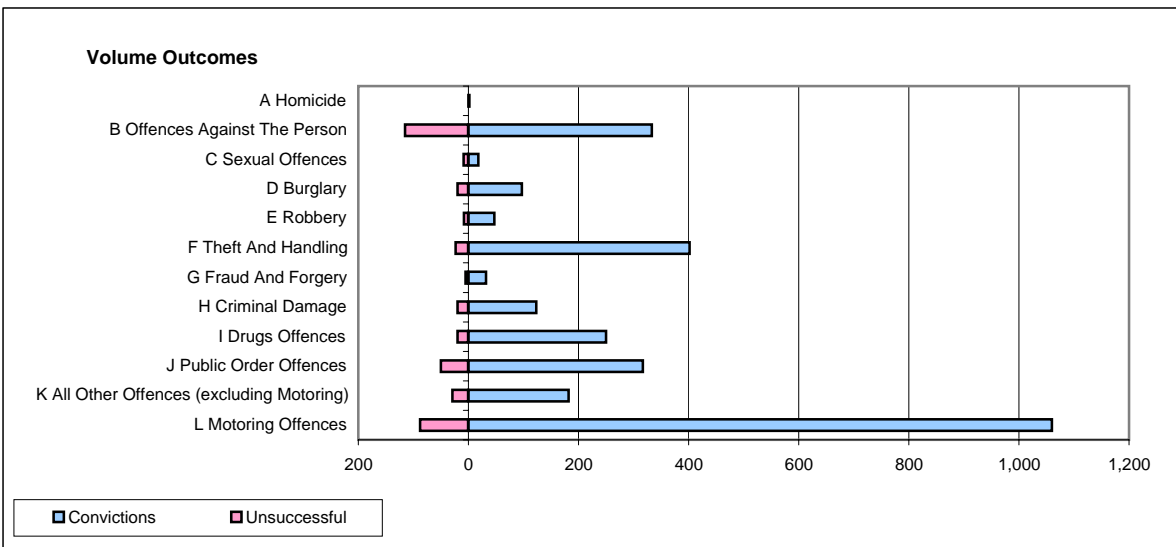
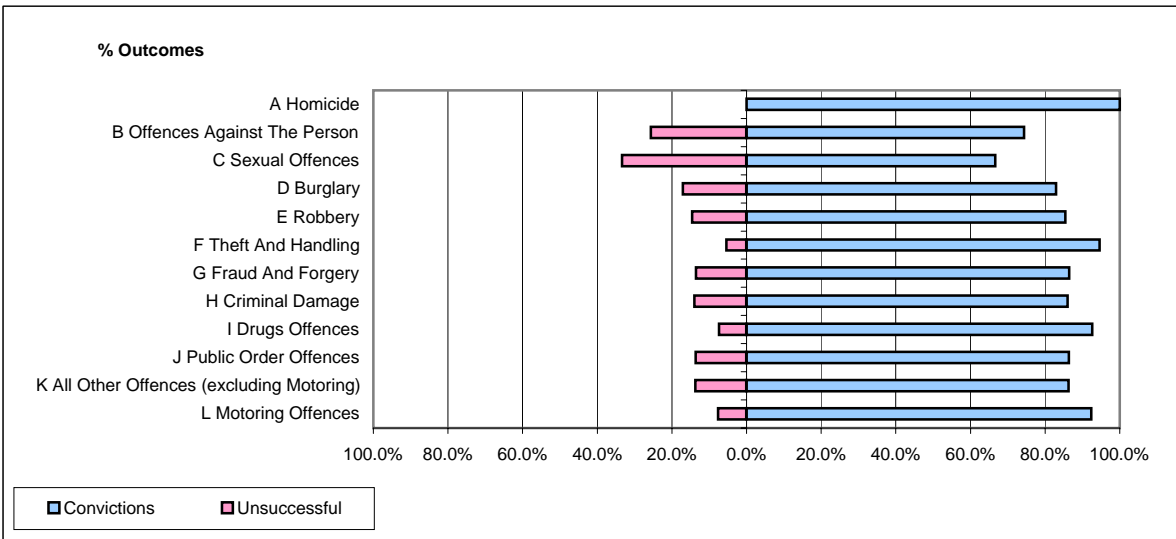


**CPS OUTCOMES BY PRINCIPAL OFFENCE CATEGORY**

**June 2007**

**P24-Merseyside**



	Convictions		Unsuccessful	
	Number of Defendants	%	Number of Defendants	%
<b>A Homicide</b>	<b>2</b>	<b>100.0%</b>	<b>0</b>	<b>0.0%</b>
<b>B Offences Against The Person</b>	<b>333</b>	<b>74.3%</b>	<b>115</b>	<b>25.7%</b>
<b>C Sexual Offences</b>	<b>18</b>	<b>66.7%</b>	<b>9</b>	<b>33.3%</b>
<b>D Burglary</b>	<b>97</b>	<b>82.9%</b>	<b>20</b>	<b>17.1%</b>
<b>E Robbery</b>	<b>47</b>	<b>85.5%</b>	<b>8</b>	<b>14.5%</b>
<b>F Theft And Handling</b>	<b>402</b>	<b>94.6%</b>	<b>23</b>	<b>5.4%</b>
<b>G Fraud And Forgery</b>	<b>32</b>	<b>86.5%</b>	<b>5</b>	<b>13.5%</b>
<b>H Criminal Damage</b>	<b>123</b>	<b>86.0%</b>	<b>20</b>	<b>14.0%</b>
<b>I Drugs Offences</b>	<b>250</b>	<b>92.6%</b>	<b>20</b>	<b>7.4%</b>
<b>J Public Order Offences</b>	<b>317</b>	<b>86.4%</b>	<b>50</b>	<b>13.6%</b>
<b>K All Other Offences (excluding Motoring)</b>	<b>182</b>	<b>86.3%</b>	<b>29</b>	<b>13.7%</b>
<b>L Motoring Offences</b>	<b>1,060</b>	<b>92.3%</b>	<b>88</b>	<b>7.7%</b>
<b>Admin Finalisations</b>	<b>0</b>	<b>0.0%</b>	<b>42</b>	<b>100.0%</b>
<b>TOTAL</b>	<b>2,863</b>	<b>87.0%</b>	<b>429</b>	<b>13.0%</b>