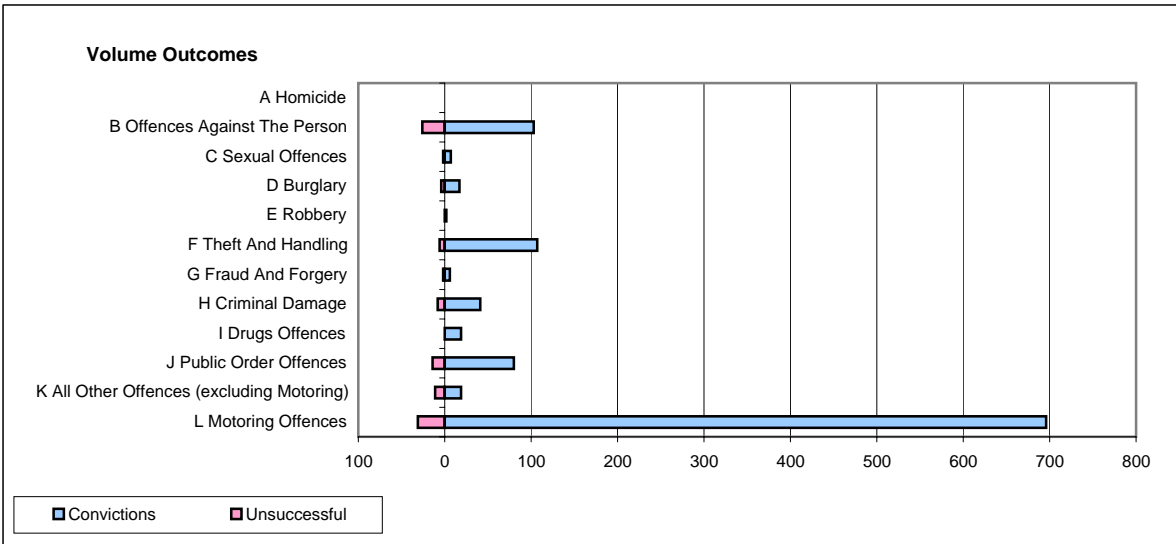
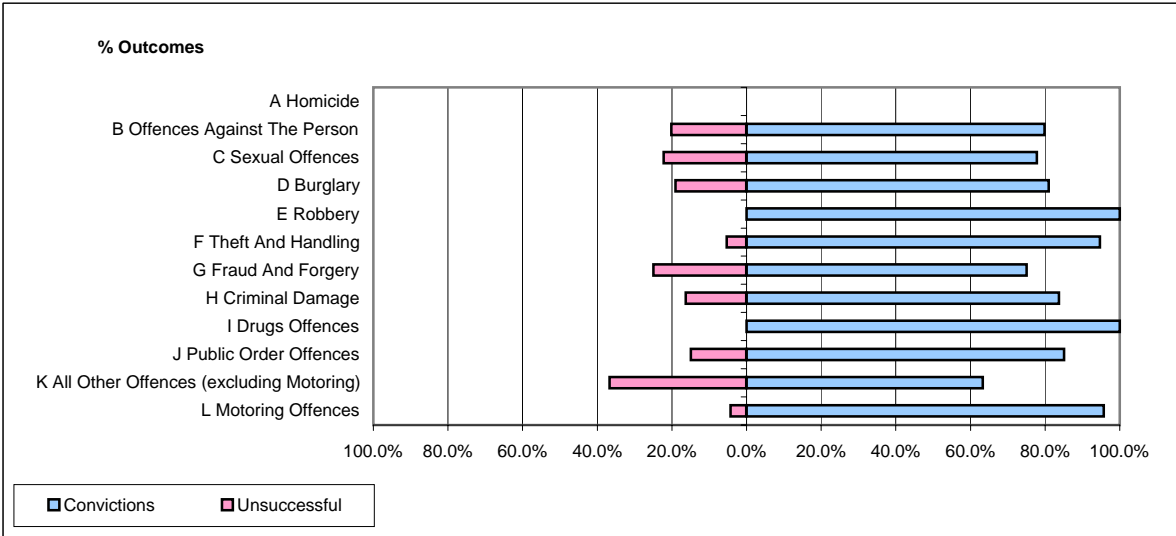


CPS OUTCOMES BY PRINCIPAL OFFENCE CATEGORY

June 2007

P23-Lincolnshire



	Convictions		Unsuccessful	
	Number of Defendants	%	Number of Defendants	%
A Homicide	0	#DIV/0!	0	#DIV/0!
B Offences Against The Person	103	79.8%	26	20.2%
C Sexual Offences	7	77.8%	2	22.2%
D Burglary	17	81.0%	4	19.0%
E Robbery	2	100.0%	0	0.0%
F Theft And Handling	107	94.7%	6	5.3%
G Fraud And Forgery	6	75.0%	2	25.0%
H Criminal Damage	41	83.7%	8	16.3%
I Drugs Offences	19	100.0%	0	0.0%
J Public Order Offences	80	85.1%	14	14.9%
K All Other Offences (excluding Motoring)	19	63.3%	11	36.7%
L Motoring Offences	696	95.7%	31	4.3%
Admin Finalisations	0	0.0%	12	100.0%
TOTAL	1,097	90.4%	116	9.6%