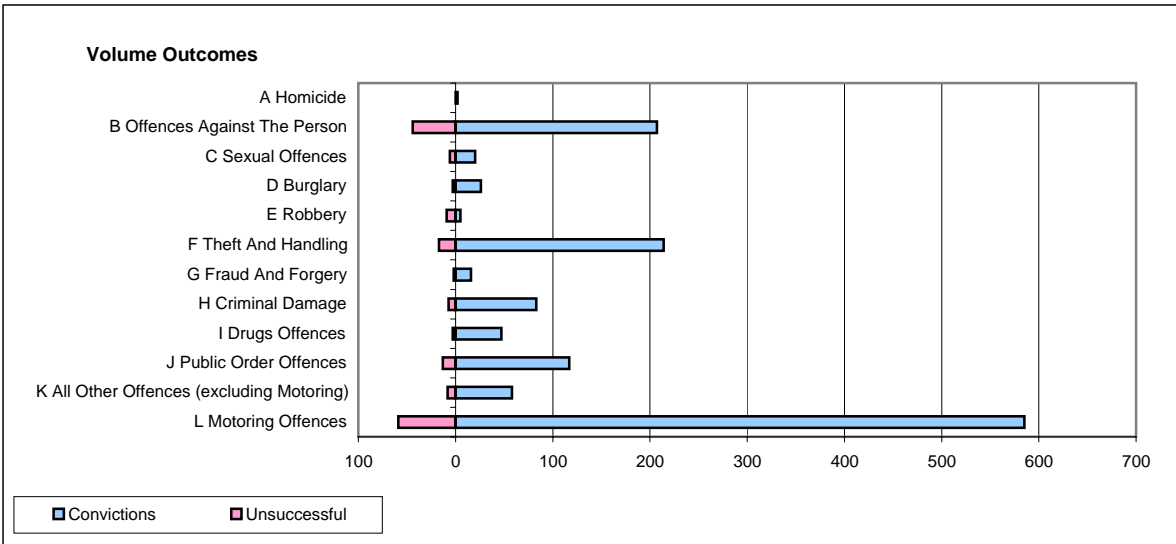
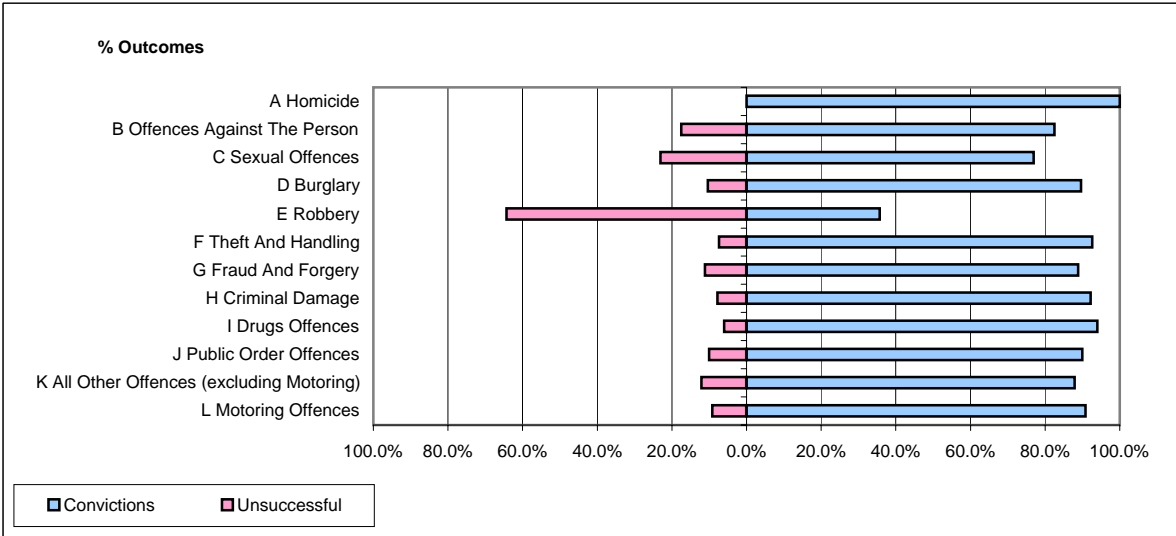


CPS OUTCOMES BY PRINCIPAL OFFENCE CATEGORY

June 2007

P22-Leicestershire



	Convictions		Unsuccessful	
	Number of Defendants	%	Number of Defendants	%
A Homicide	2	100.0%	0	0.0%
B Offences Against The Person	207	82.5%	44	17.5%
C Sexual Offences	20	76.9%	6	23.1%
D Burglary	26	89.7%	3	10.3%
E Robbery	5	35.7%	9	64.3%
F Theft And Handling	214	92.6%	17	7.4%
G Fraud And Forgery	16	88.9%	2	11.1%
H Criminal Damage	83	92.2%	7	7.8%
I Drugs Offences	47	94.0%	3	6.0%
J Public Order Offences	117	90.0%	13	10.0%
K All Other Offences (excluding Motoring)	58	87.9%	8	12.1%
L Motoring Offences	585	90.8%	59	9.2%
Admin Finalisations	0	0.0%	23	100.0%
TOTAL	1,380	87.7%	194	12.3%