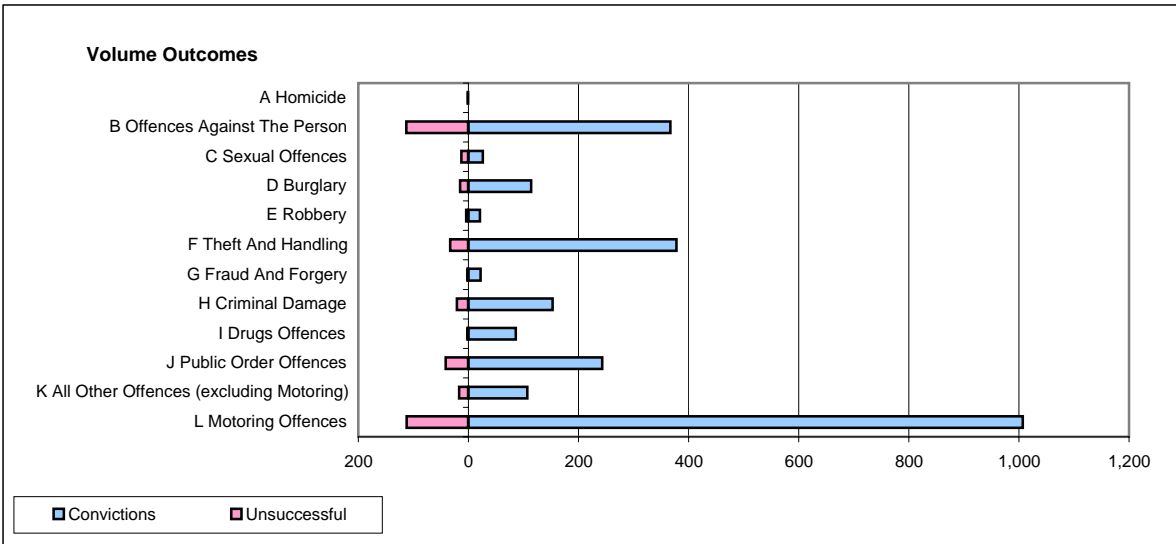
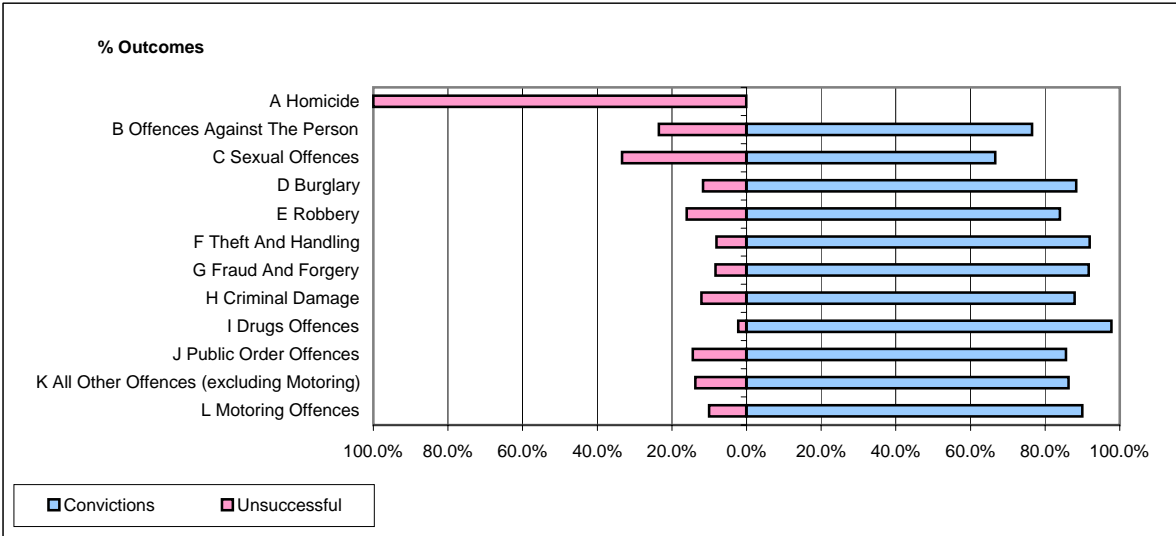


**CPS OUTCOMES BY PRINCIPAL OFFENCE CATEGORY**

**June 2007**

**P21-Lancashire**



	Convictions		Unsuccessful	
	Number of Defendants	%	Number of Defendants	%
<b>A Homicide</b>	<b>0</b>	<b>0.0%</b>	<b>1</b>	<b>100.0%</b>
<b>B Offences Against The Person</b>	<b>367</b>	<b>76.5%</b>	<b>113</b>	<b>23.5%</b>
<b>C Sexual Offences</b>	<b>26</b>	<b>66.7%</b>	<b>13</b>	<b>33.3%</b>
<b>D Burglary</b>	<b>114</b>	<b>88.4%</b>	<b>15</b>	<b>11.6%</b>
<b>E Robbery</b>	<b>21</b>	<b>84.0%</b>	<b>4</b>	<b>16.0%</b>
<b>F Theft And Handling</b>	<b>378</b>	<b>92.0%</b>	<b>33</b>	<b>8.0%</b>
<b>G Fraud And Forgery</b>	<b>22</b>	<b>91.7%</b>	<b>2</b>	<b>8.3%</b>
<b>H Criminal Damage</b>	<b>153</b>	<b>87.9%</b>	<b>21</b>	<b>12.1%</b>
<b>I Drugs Offences</b>	<b>86</b>	<b>97.7%</b>	<b>2</b>	<b>2.3%</b>
<b>J Public Order Offences</b>	<b>243</b>	<b>85.6%</b>	<b>41</b>	<b>14.4%</b>
<b>K All Other Offences (excluding Motoring)</b>	<b>107</b>	<b>86.3%</b>	<b>17</b>	<b>13.7%</b>
<b>L Motoring Offences</b>	<b>1,007</b>	<b>90.0%</b>	<b>112</b>	<b>10.0%</b>
<b>Admin Finalisations</b>	<b>0</b>	<b>0.0%</b>	<b>41</b>	<b>100.0%</b>
<b>TOTAL</b>	<b>2,524</b>	<b>85.9%</b>	<b>415</b>	<b>14.1%</b>