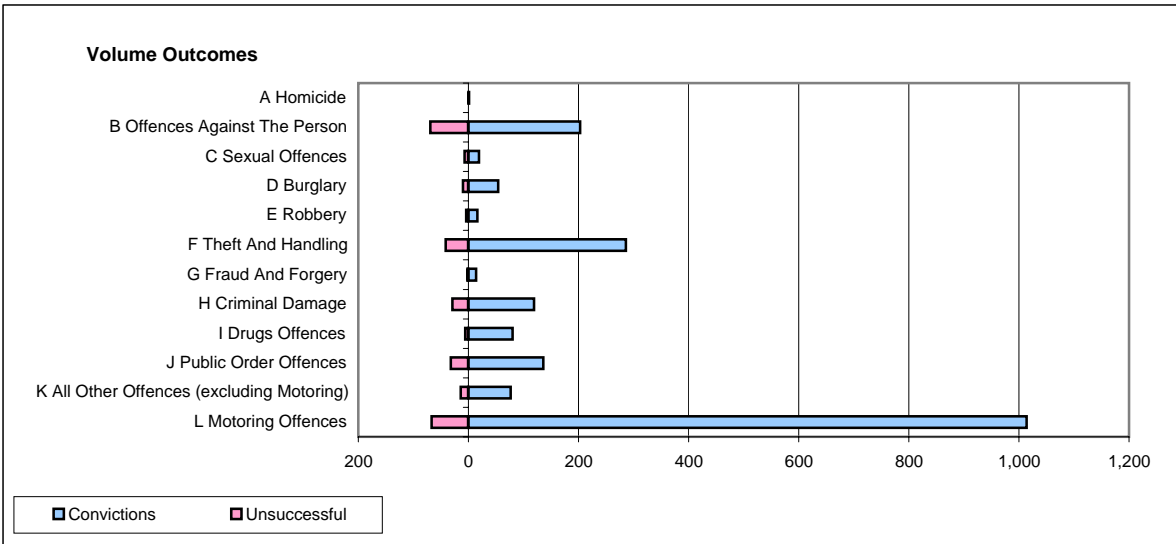
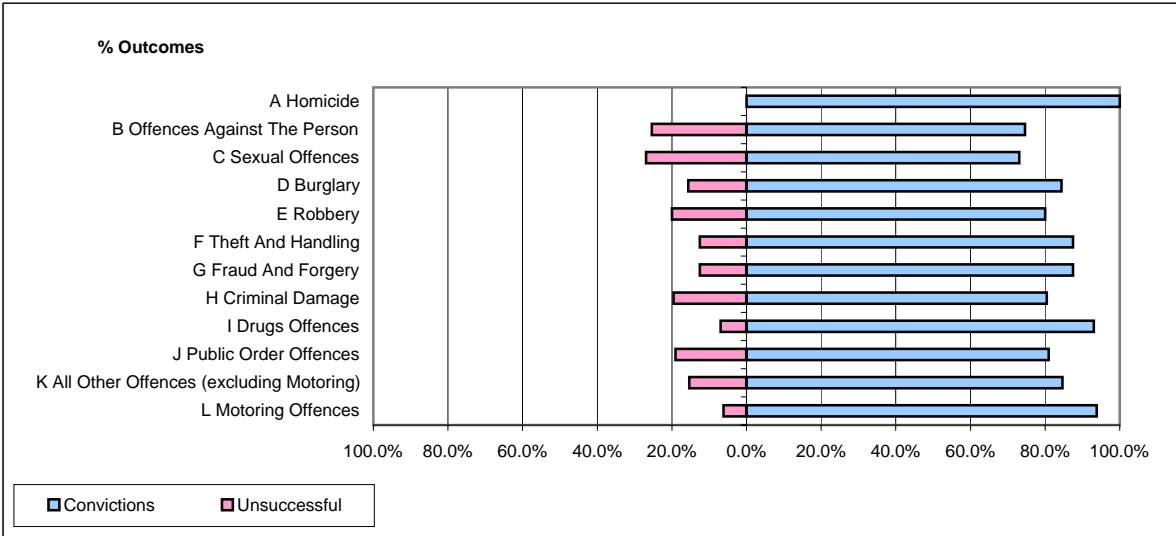


CPS OUTCOMES BY PRINCIPAL OFFENCE CATEGORY

June 2007

P20-Kent



	Convictions		Unsuccessful	
	Number of Defendants	%	Number of Defendants	%
A Homicide	1	100.0%	0	0.0%
B Offences Against The Person	203	74.6%	69	25.4%
C Sexual Offences	19	73.1%	7	26.9%
D Burglary	54	84.4%	10	15.6%
E Robbery	16	80.0%	4	20.0%
F Theft And Handling	286	87.5%	41	12.5%
G Fraud And Forgery	14	87.5%	2	12.5%
H Criminal Damage	119	80.4%	29	19.6%
I Drugs Offences	80	93.0%	6	7.0%
J Public Order Offences	136	81.0%	32	19.0%
K All Other Offences (excluding Motoring)	77	84.6%	14	15.4%
L Motoring Offences	1,014	93.8%	67	6.2%
Admin Finalisations	0	0.0%	44	100.0%
TOTAL	2,019	86.1%	325	13.9%