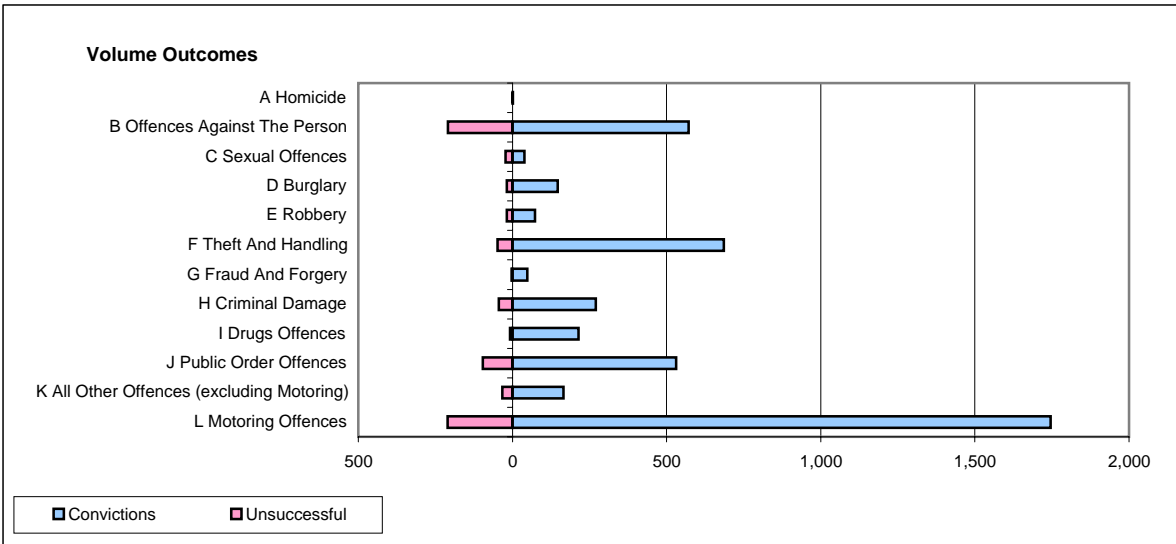
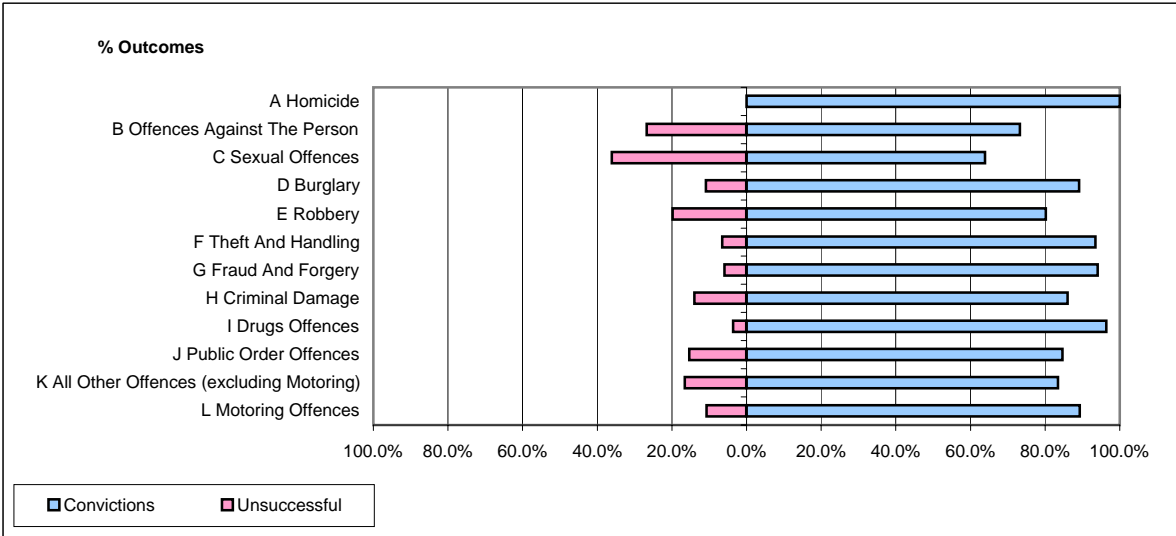


CPS OUTCOMES BY PRINCIPAL OFFENCE CATEGORY

June 2007

P15-GreaterManchester



	Convictions		Unsuccessful	
	Number of Defendants	%	Number of Defendants	%
A Homicide	1	100.0%	0	0.0%
B Offences Against The Person	571	73.2%	209	26.8%
C Sexual Offences	39	63.9%	22	36.1%
D Burglary	147	89.1%	18	10.9%
E Robbery	73	80.2%	18	19.8%
F Theft And Handling	686	93.5%	48	6.5%
G Fraud And Forgery	48	94.1%	3	5.9%
H Criminal Damage	270	86.0%	44	14.0%
I Drugs Offences	214	96.4%	8	3.6%
J Public Order Offences	531	84.7%	96	15.3%
K All Other Offences (excluding Motoring)	166	83.4%	33	16.6%
L Motoring Offences	1,746	89.3%	210	10.7%
Admin Finalisations	0	0.0%	108	100.0%
TOTAL	4,492	84.6%	817	15.4%