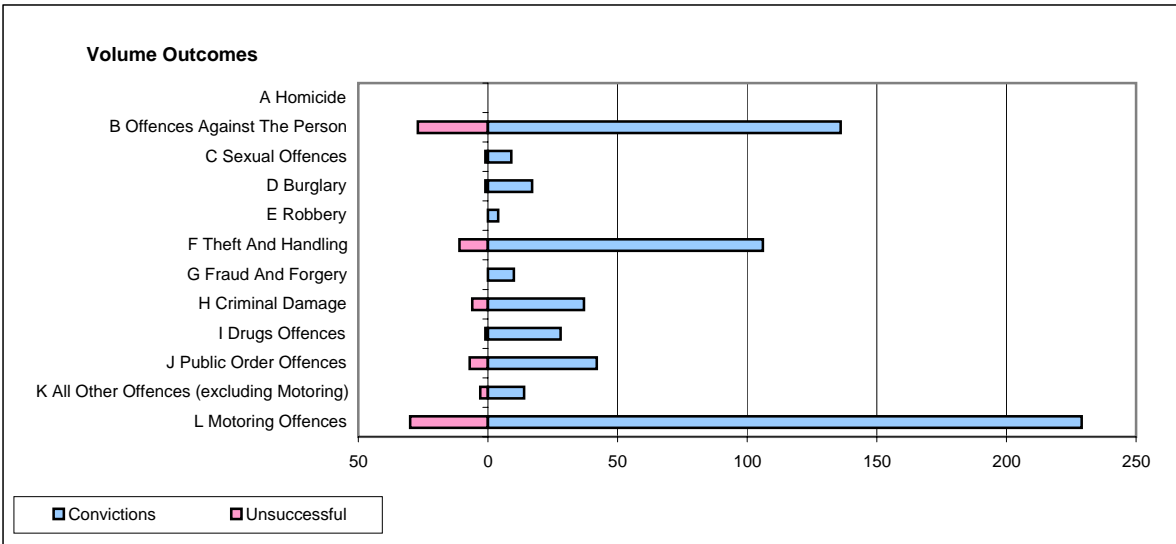
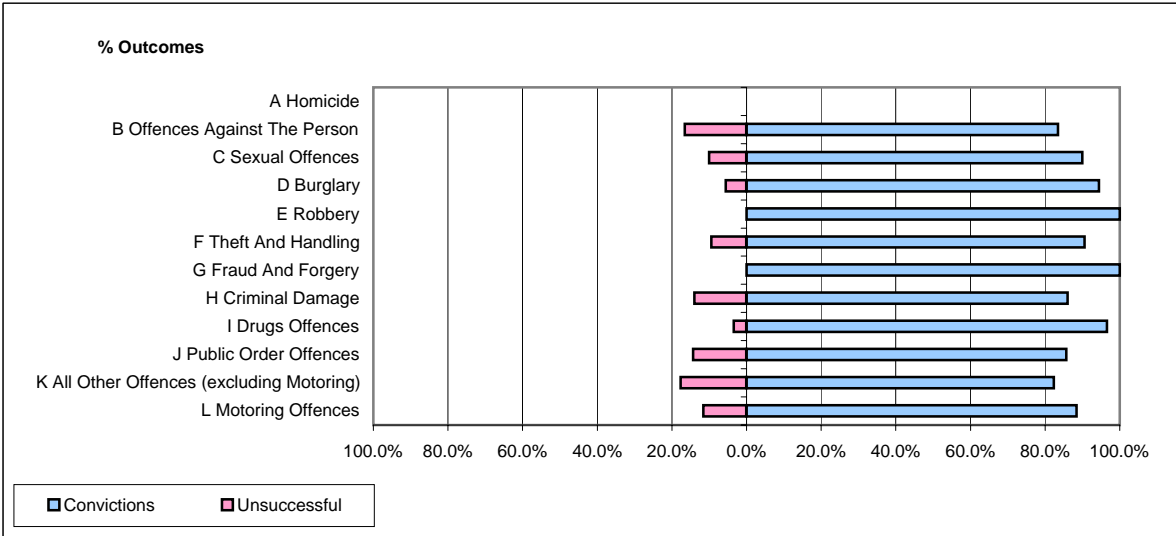


**CPS OUTCOMES BY PRINCIPAL OFFENCE CATEGORY**

**June 2007**

**P14-Gloucestershire**



	Convictions		Unsuccessful	
	Number of Defendants	%	Number of Defendants	%
<b>A Homicide</b>	<b>0</b>	<b>#DIV/0!</b>	<b>0</b>	<b>#DIV/0!</b>
<b>B Offences Against The Person</b>	<b>136</b>	<b>83.4%</b>	<b>27</b>	<b>16.6%</b>
<b>C Sexual Offences</b>	<b>9</b>	<b>90.0%</b>	<b>1</b>	<b>10.0%</b>
<b>D Burglary</b>	<b>17</b>	<b>94.4%</b>	<b>1</b>	<b>5.6%</b>
<b>E Robbery</b>	<b>4</b>	<b>100.0%</b>	<b>0</b>	<b>0.0%</b>
<b>F Theft And Handling</b>	<b>106</b>	<b>90.6%</b>	<b>11</b>	<b>9.4%</b>
<b>G Fraud And Forgery</b>	<b>10</b>	<b>100.0%</b>	<b>0</b>	<b>0.0%</b>
<b>H Criminal Damage</b>	<b>37</b>	<b>86.0%</b>	<b>6</b>	<b>14.0%</b>
<b>I Drugs Offences</b>	<b>28</b>	<b>96.6%</b>	<b>1</b>	<b>3.4%</b>
<b>J Public Order Offences</b>	<b>42</b>	<b>85.7%</b>	<b>7</b>	<b>14.3%</b>
<b>K All Other Offences (excluding Motoring)</b>	<b>14</b>	<b>82.4%</b>	<b>3</b>	<b>17.6%</b>
<b>L Motoring Offences</b>	<b>229</b>	<b>88.4%</b>	<b>30</b>	<b>11.6%</b>
<b>Admin Finalisations</b>	<b>0</b>	<b>0.0%</b>	<b>15</b>	<b>100.0%</b>
<b>TOTAL</b>	<b>632</b>	<b>86.1%</b>	<b>102</b>	<b>13.9%</b>