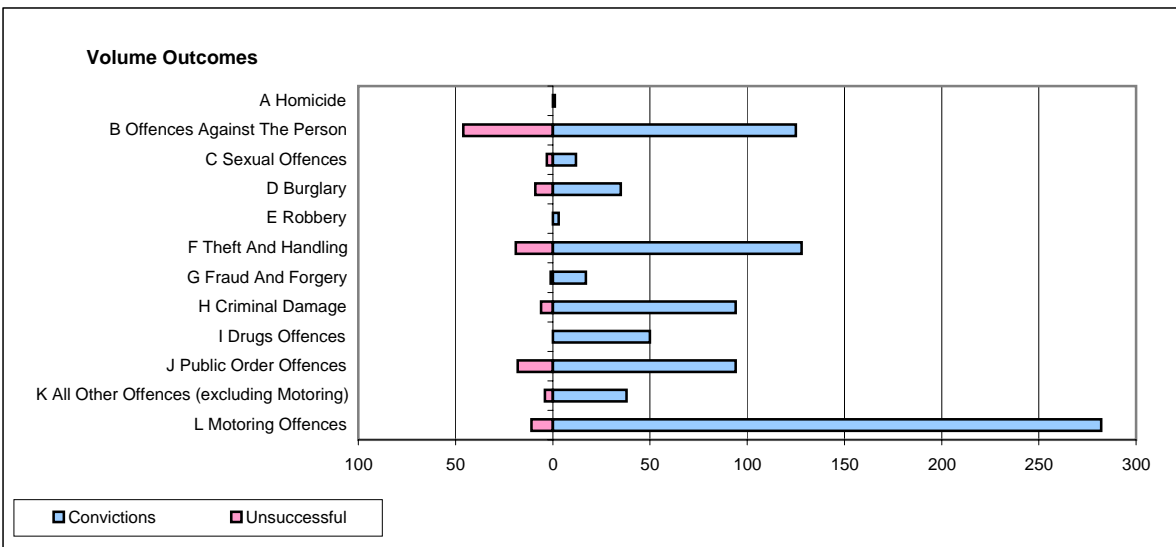
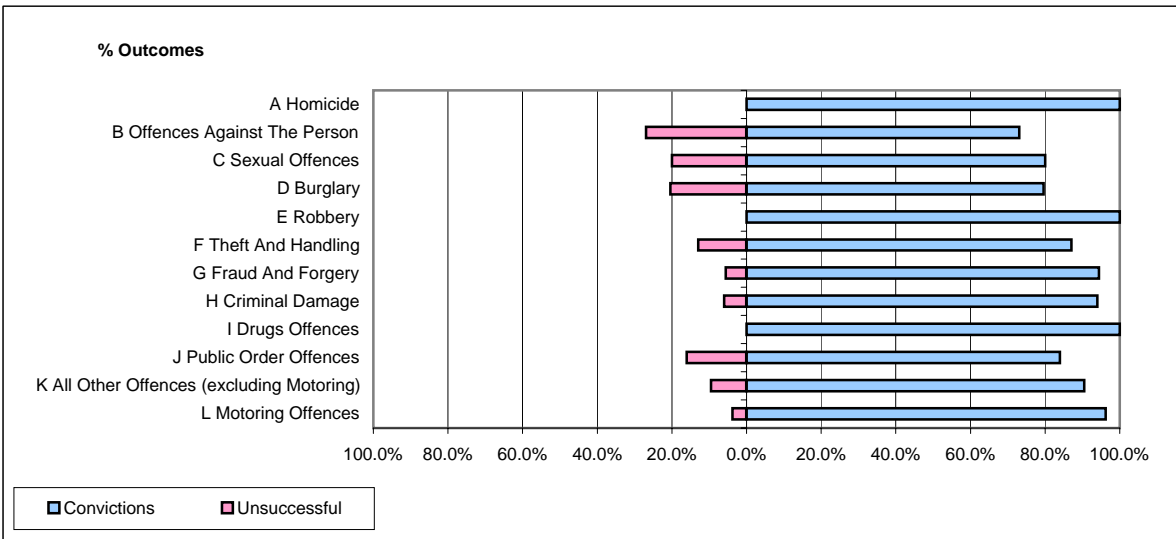


CPS OUTCOMES BY PRINCIPAL OFFENCE CATEGORY

June 2007

P11-Durham



	Convictions		Unsuccessful	
	Number of Defendants	%	Number of Defendants	%
A Homicide	1	100.0%	0	0.0%
B Offences Against The Person	125	73.1%	46	26.9%
C Sexual Offences	12	80.0%	3	20.0%
D Burglary	35	79.5%	9	20.5%
E Robbery	3	100.0%	0	0.0%
F Theft And Handling	128	87.1%	19	12.9%
G Fraud And Forgery	17	94.4%	1	5.6%
H Criminal Damage	94	94.0%	6	6.0%
I Drugs Offences	50	100.0%	0	0.0%
J Public Order Offences	94	83.9%	18	16.1%
K All Other Offences (excluding Motoring)	38	90.5%	4	9.5%
L Motoring Offences	282	96.2%	11	3.8%
Admin Finalisations	0	0.0%	13	100.0%
TOTAL	879	87.1%	130	12.9%