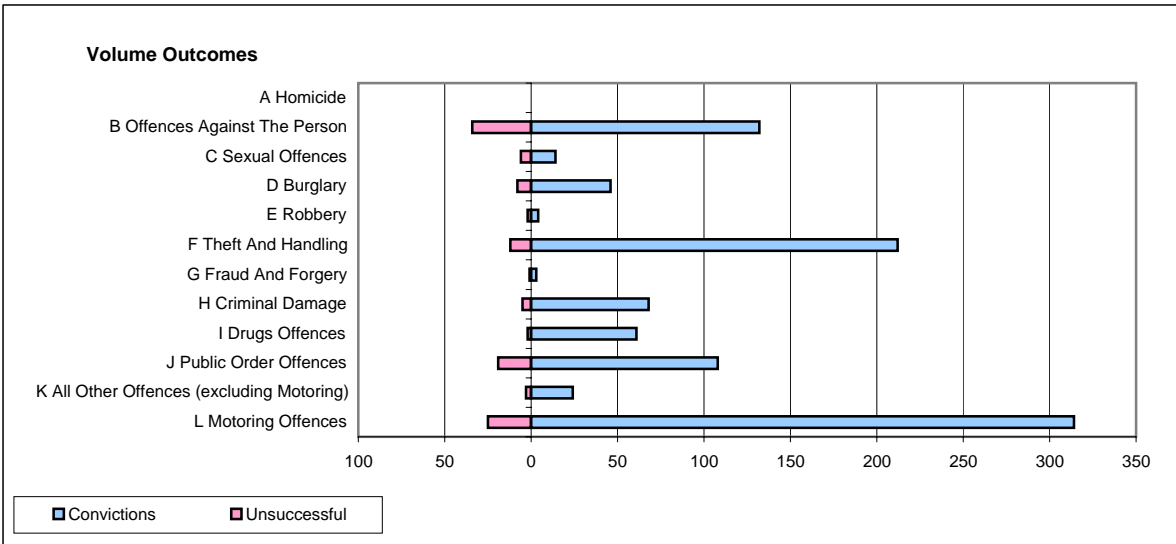
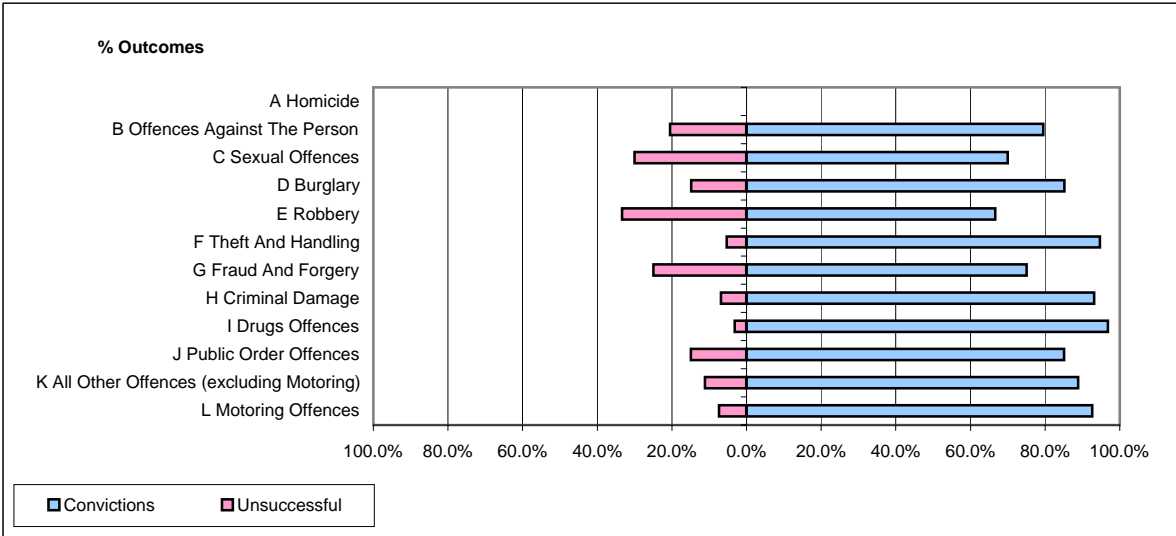


CPS OUTCOMES BY PRINCIPAL OFFENCE CATEGORY

June 2007

P06-Cleveland



	Convictions		Unsuccessful	
	Number of Defendants	%	Number of Defendants	%
A Homicide	0	#DIV/0!	0	#DIV/0!
B Offences Against The Person	132	79.5%	34	20.5%
C Sexual Offences	14	70.0%	6	30.0%
D Burglary	46	85.2%	8	14.8%
E Robbery	4	66.7%	2	33.3%
F Theft And Handling	212	94.6%	12	5.4%
G Fraud And Forgery	3	75.0%	1	25.0%
H Criminal Damage	68	93.2%	5	6.8%
I Drugs Offences	61	96.8%	2	3.2%
J Public Order Offences	108	85.0%	19	15.0%
K All Other Offences (excluding Motoring)	24	88.9%	3	11.1%
L Motoring Offences	314	92.6%	25	7.4%
Admin Finalisations	0	0.0%	14	100.0%
TOTAL	986	88.3%	131	11.7%