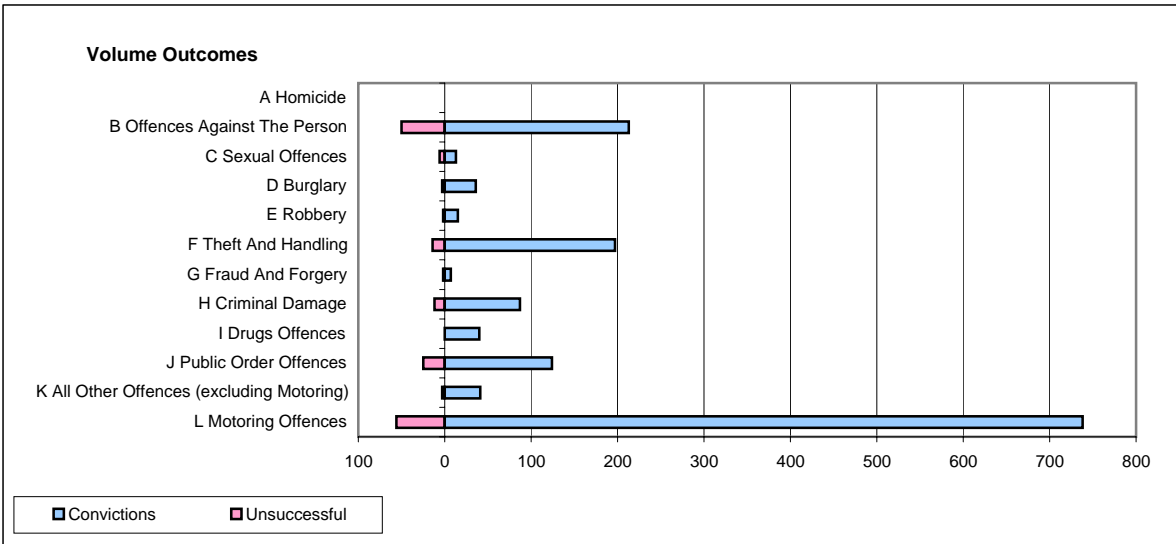
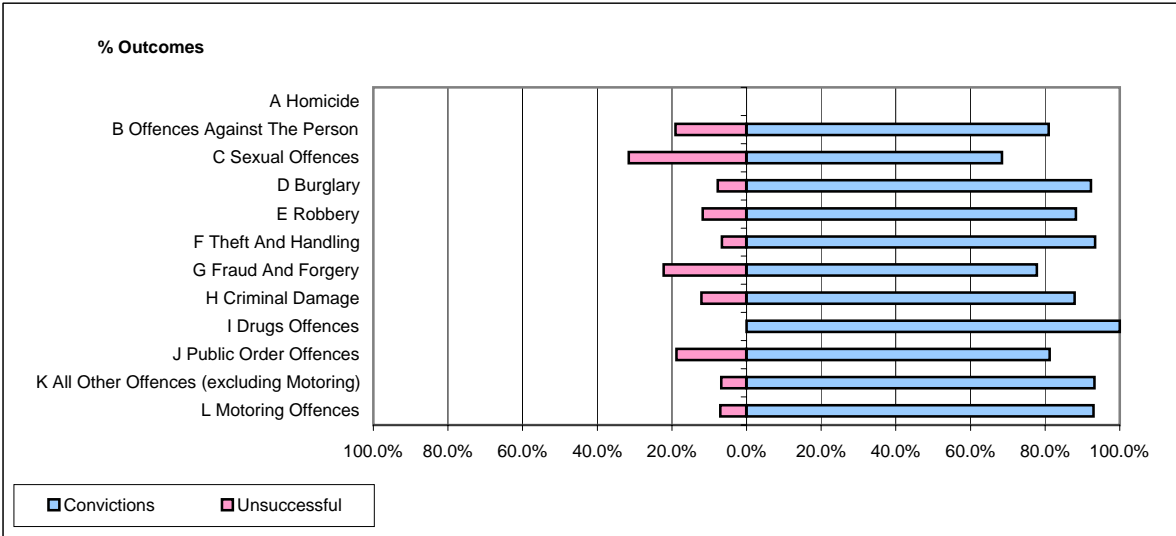


CPS OUTCOMES BY PRINCIPAL OFFENCE CATEGORY

June 2007

P04-Cheshire



	Convictions		Unsuccessful	
	Number of Defendants	%	Number of Defendants	%
A Homicide	0	#DIV/0!	0	#DIV/0!
B Offences Against The Person	213	81.0%	50	19.0%
C Sexual Offences	13	68.4%	6	31.6%
D Burglary	36	92.3%	3	7.7%
E Robbery	15	88.2%	2	11.8%
F Theft And Handling	197	93.4%	14	6.6%
G Fraud And Forgery	7	77.8%	2	22.2%
H Criminal Damage	87	87.9%	12	12.1%
I Drugs Offences	40	100.0%	0	0.0%
J Public Order Offences	124	81.2%	25	18.8%
K All Other Offences (excluding Motoring)	41	93.2%	3	6.8%
L Motoring Offences	738	92.9%	56	7.1%
Admin Finalisations	0	0.0%	25	100.0%
TOTAL	1,511	88.4%	198	11.6%