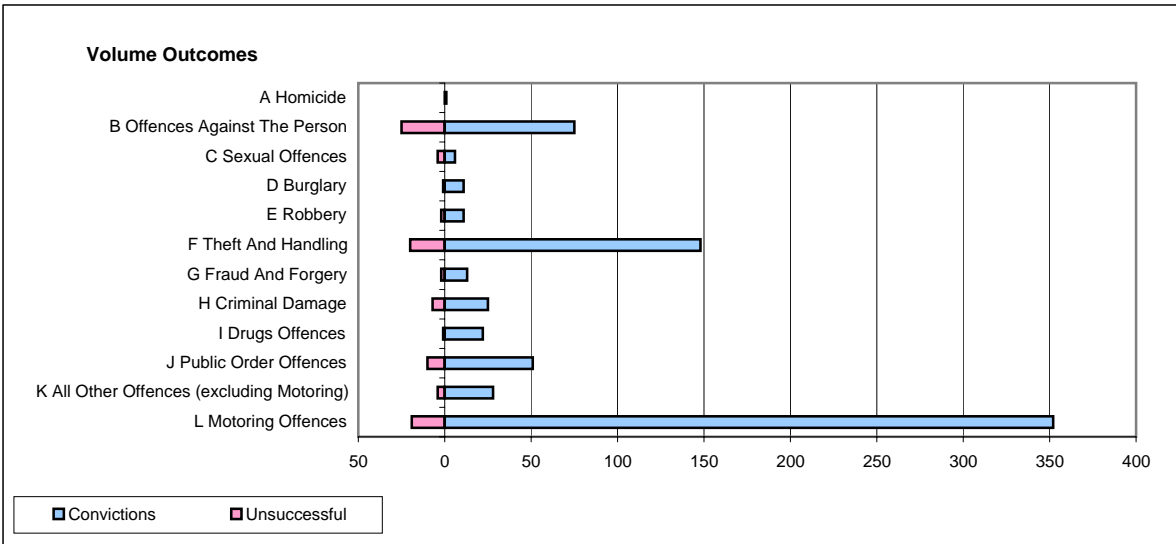
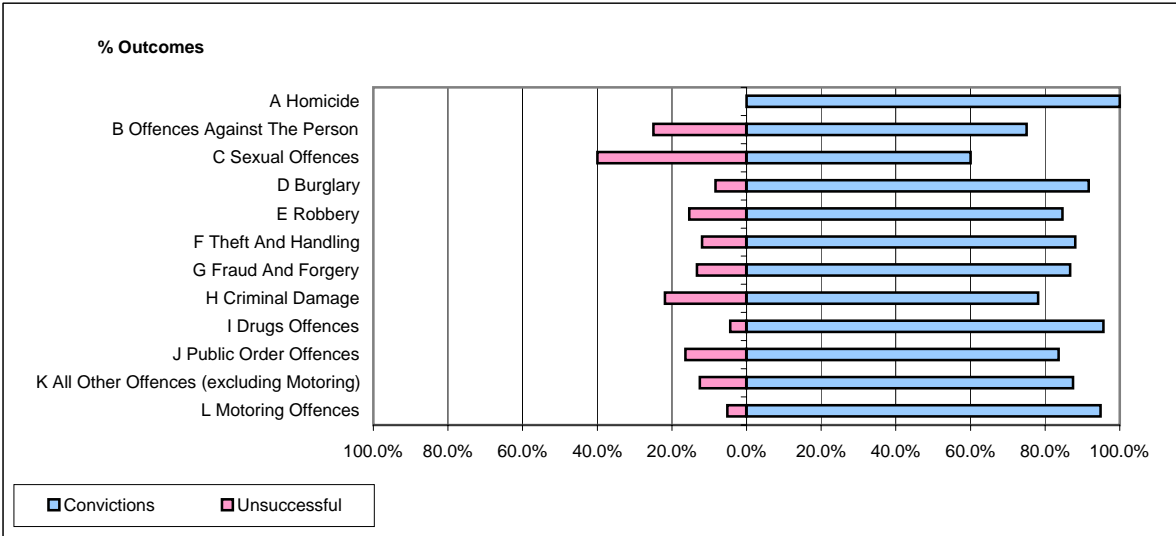


CPS OUTCOMES BY PRINCIPAL OFFENCE CATEGORY

June 2007

P02-Bedfordshire



	Convictions		Unsuccessful	
	Number of Defendants	%	Number of Defendants	%
A Homicide	1	100.0%	0	0.0%
B Offences Against The Person	75	75.0%	25	25.0%
C Sexual Offences	6	60.0%	4	40.0%
D Burglary	11	91.7%	1	8.3%
E Robbery	11	84.6%	2	15.4%
F Theft And Handling	148	88.1%	20	11.9%
G Fraud And Forgery	13	86.7%	2	13.3%
H Criminal Damage	25	78.1%	7	21.9%
I Drugs Offences	22	95.7%	1	4.3%
J Public Order Offences	51	83.6%	10	16.4%
K All Other Offences (excluding Motoring)	28	87.5%	4	12.5%
L Motoring Offences	352	94.9%	19	5.1%
Admin Finalisations	0	0.0%	15	100.0%
TOTAL	743	87.1%	110	12.9%