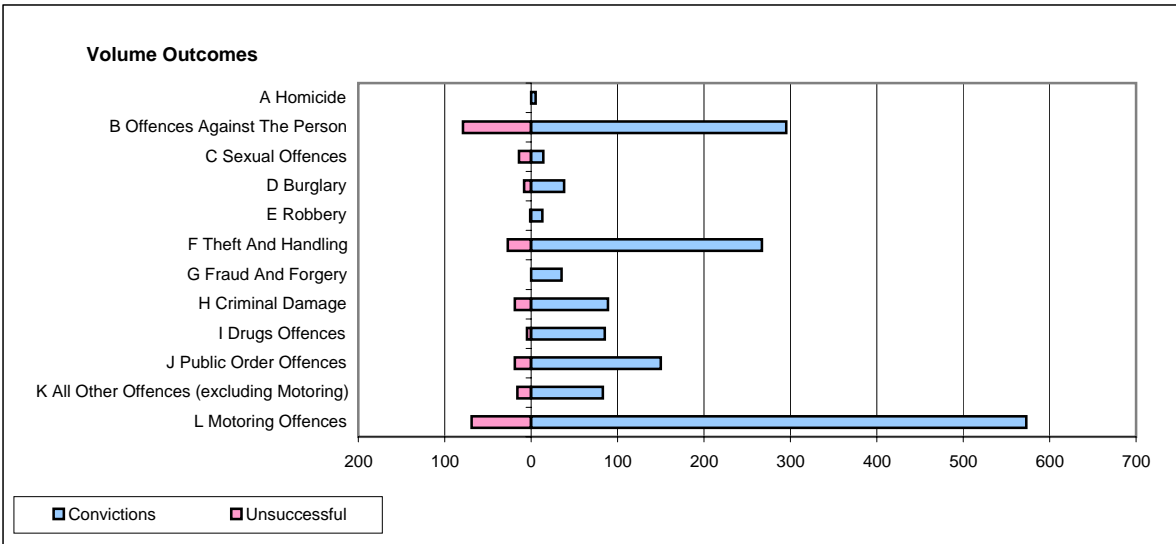
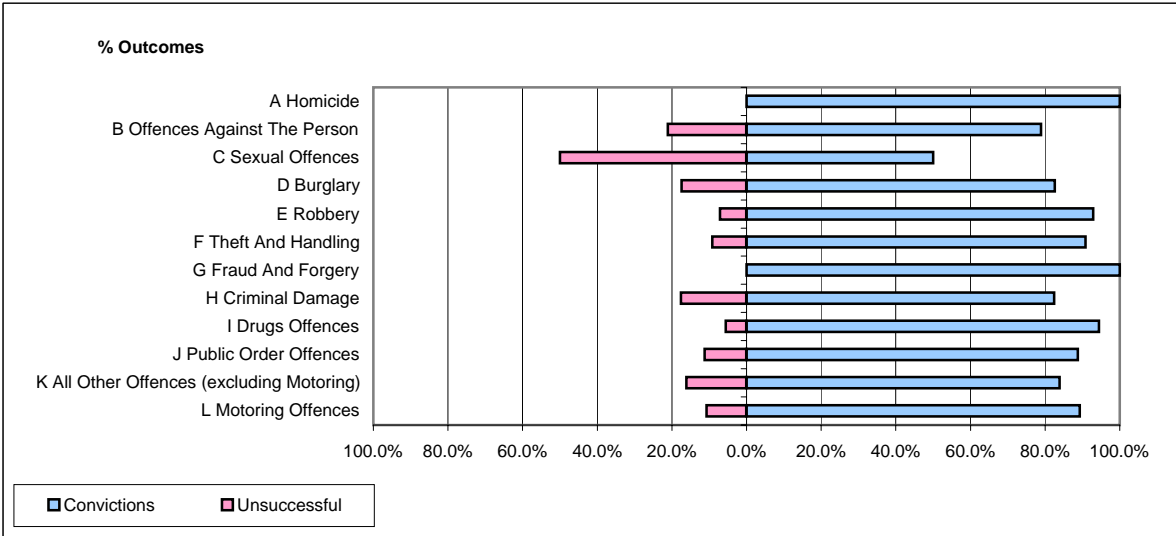


**CPS OUTCOMES BY PRINCIPAL OFFENCE CATEGORY**

**May 2007**

**P37-Sussex**



	Convictions		Unsuccessful	
	Number of Defendants	%	Number of Defendants	%
<b>A Homicide</b>	<b>5</b>	<b>100.0%</b>	<b>0</b>	<b>0.0%</b>
<b>B Offences Against The Person</b>	<b>295</b>	<b>78.9%</b>	<b>79</b>	<b>21.1%</b>
<b>C Sexual Offences</b>	<b>14</b>	<b>50.0%</b>	<b>14</b>	<b>50.0%</b>
<b>D Burglary</b>	<b>38</b>	<b>82.6%</b>	<b>8</b>	<b>17.4%</b>
<b>E Robbery</b>	<b>13</b>	<b>92.9%</b>	<b>1</b>	<b>7.1%</b>
<b>F Theft And Handling</b>	<b>267</b>	<b>90.8%</b>	<b>27</b>	<b>9.2%</b>
<b>G Fraud And Forgery</b>	<b>35</b>	<b>100.0%</b>	<b>0</b>	<b>0.0%</b>
<b>H Criminal Damage</b>	<b>89</b>	<b>82.4%</b>	<b>19</b>	<b>17.6%</b>
<b>I Drugs Offences</b>	<b>85</b>	<b>94.4%</b>	<b>5</b>	<b>5.6%</b>
<b>J Public Order Offences</b>	<b>150</b>	<b>88.8%</b>	<b>19</b>	<b>11.2%</b>
<b>K All Other Offences (excluding Motoring)</b>	<b>83</b>	<b>83.8%</b>	<b>16</b>	<b>16.2%</b>
<b>L Motoring Offences</b>	<b>573</b>	<b>89.3%</b>	<b>69</b>	<b>10.7%</b>
<b>Admin Finalisations</b>	<b>0</b>	<b>0.0%</b>	<b>35</b>	<b>100.0%</b>
<b>TOTAL</b>	<b>1,647</b>	<b>84.9%</b>	<b>292</b>	<b>15.1%</b>