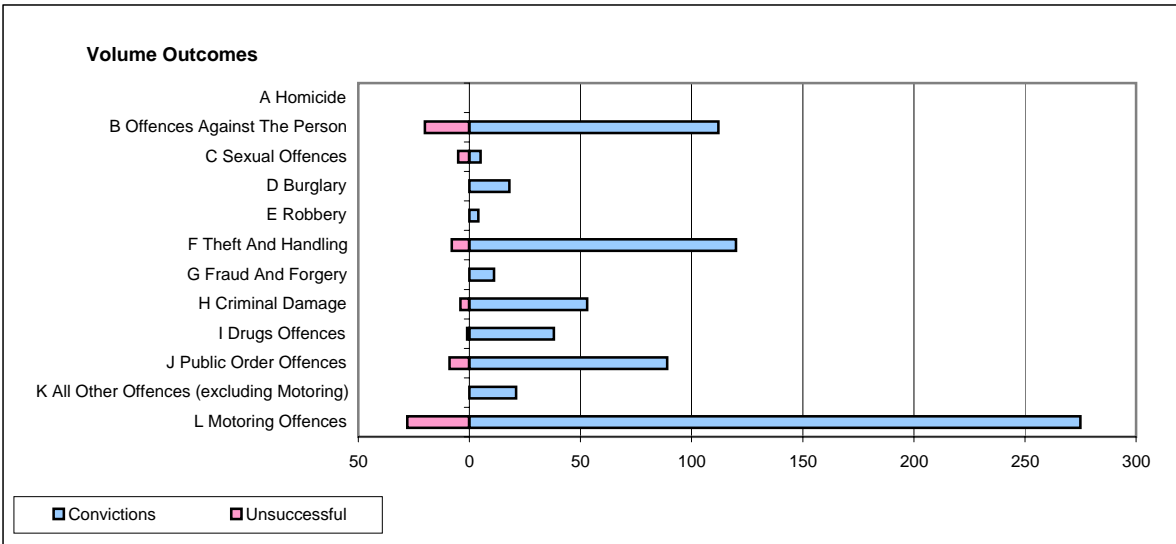
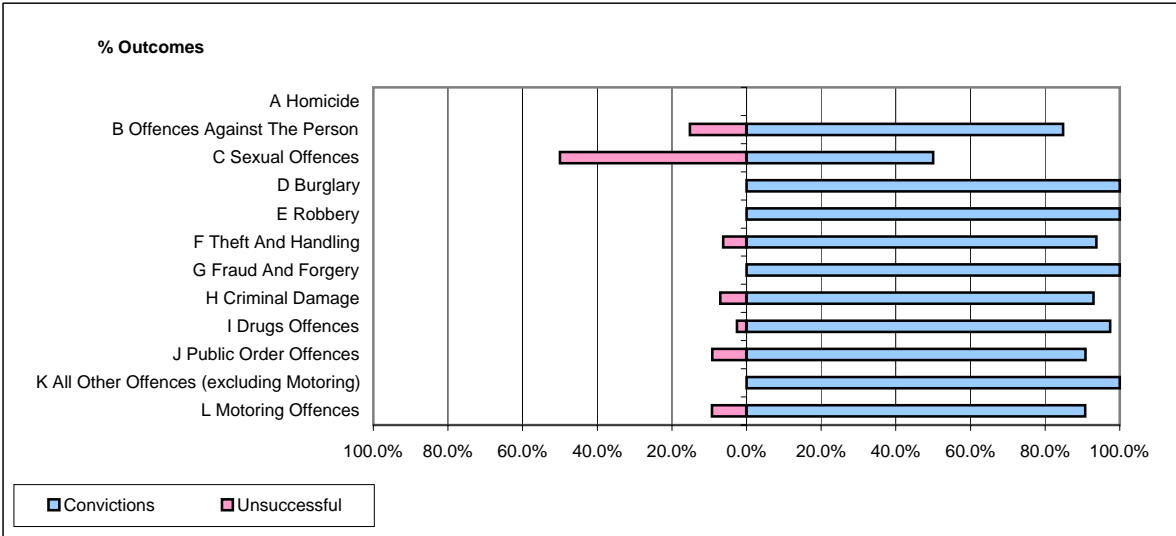


CPS OUTCOMES BY PRINCIPAL OFFENCE CATEGORY

May 2007

P35-Suffolk



	Convictions		Unsuccessful	
	Number of Defendants	%	Number of Defendants	%
A Homicide	0	#DIV/0!	0	#DIV/0!
B Offences Against The Person	112	84.8%	20	15.2%
C Sexual Offences	5	50.0%	5	50.0%
D Burglary	18	100.0%	0	0.0%
E Robbery	4	100.0%	0	0.0%
F Theft And Handling	120	93.8%	8	6.3%
G Fraud And Forgery	11	100.0%	0	0.0%
H Criminal Damage	53	93.0%	4	7.0%
I Drugs Offences	38	97.4%	1	2.6%
J Public Order Offences	89	90.8%	9	9.2%
K All Other Offences (excluding Motoring)	21	100.0%	0	0.0%
L Motoring Offences	275	90.8%	28	9.2%
Admin Finalisations	0	0.0%	17	100.0%
TOTAL	746	89.0%	92	11.0%