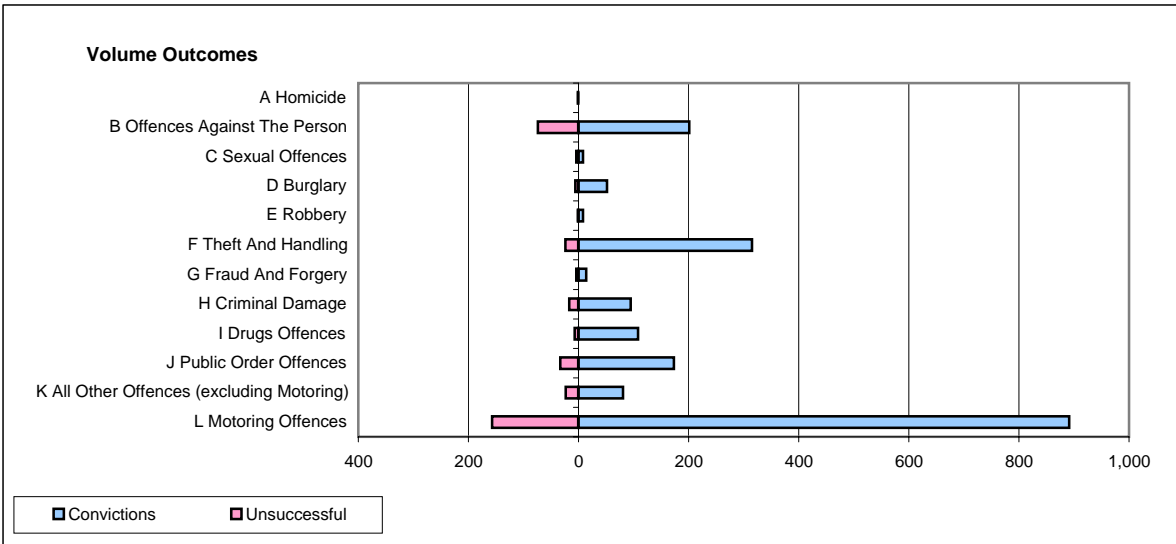
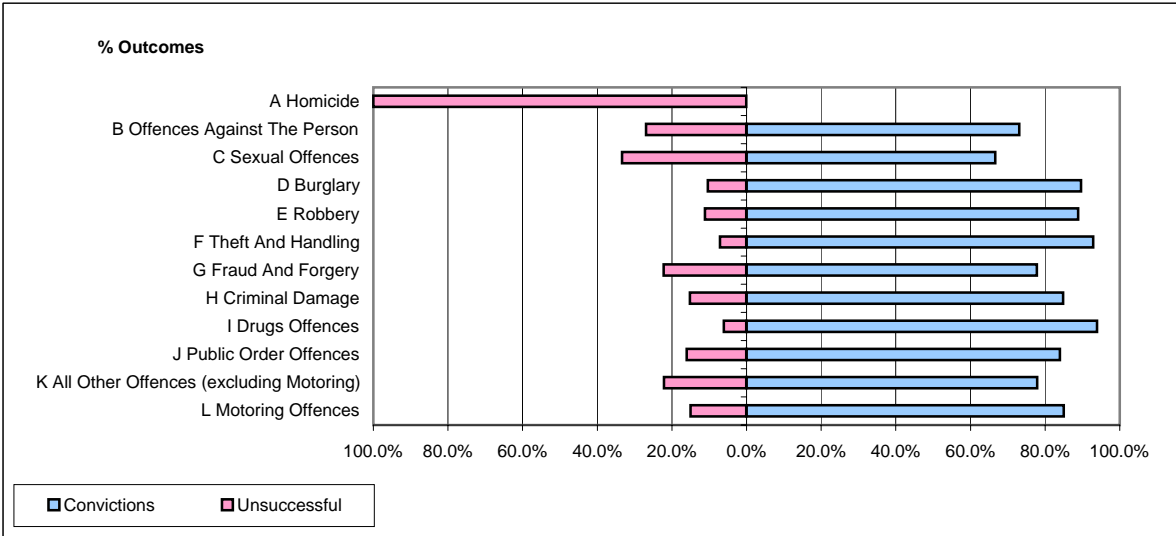


CPS OUTCOMES BY PRINCIPAL OFFENCE CATEGORY

May 2007

P32-SouthWales



	Convictions		Unsuccessful	
	Number of Defendants	%	Number of Defendants	%
A Homicide	0	0.0%	1	100.0%
B Offences Against The Person	201	73.1%	74	26.9%
C Sexual Offences	8	66.7%	4	33.3%
D Burglary	52	89.7%	6	10.3%
E Robbery	8	88.9%	1	11.1%
F Theft And Handling	315	92.9%	24	7.1%
G Fraud And Forgery	14	77.8%	4	22.2%
H Criminal Damage	95	84.8%	17	15.2%
I Drugs Offences	108	93.9%	7	6.1%
J Public Order Offences	173	84.0%	33	16.0%
K All Other Offences (excluding Motoring)	81	77.9%	23	22.1%
L Motoring Offences	891	85.0%	157	15.0%
Admin Finalisations	0	0.0%	93	100.0%
TOTAL	1,946	81.4%	444	18.6%