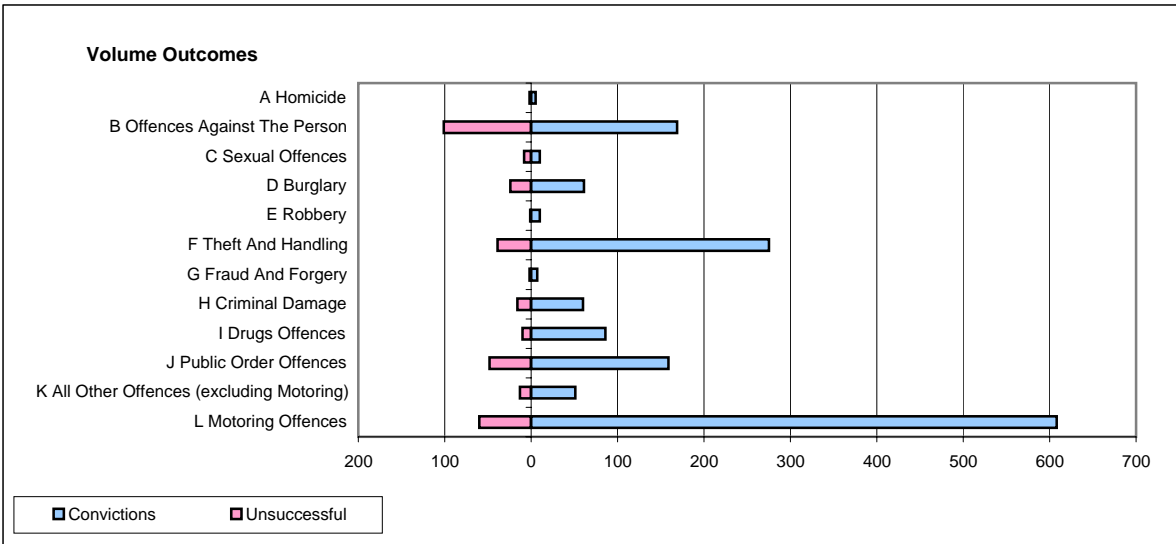
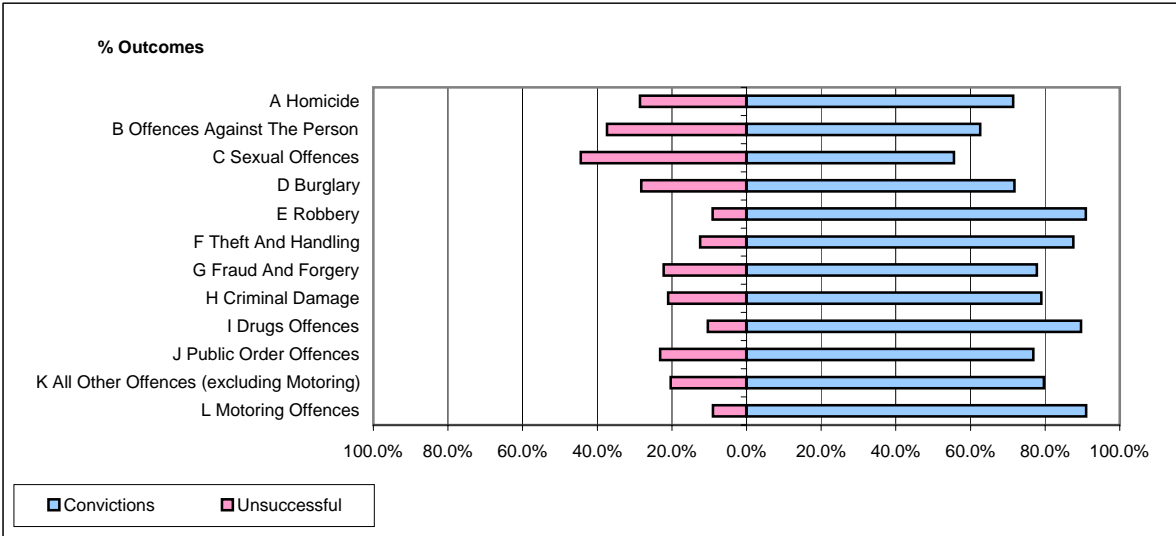


CPS OUTCOMES BY PRINCIPAL OFFENCE CATEGORY

May 2007

P31-Nottinghamshire



	Convictions		Unsuccessful	
	Number of Defendants	%	Number of Defendants	%
A Homicide	5	71.4%	2	28.6%
B Offences Against The Person	169	62.6%	101	37.4%
C Sexual Offences	10	55.6%	8	44.4%
D Burglary	61	71.8%	24	28.2%
E Robbery	10	90.9%	1	9.1%
F Theft And Handling	275	87.6%	39	12.4%
G Fraud And Forgery	7	77.8%	2	22.2%
H Criminal Damage	60	78.9%	16	21.1%
I Drugs Offences	86	89.6%	10	10.4%
J Public Order Offences	159	76.8%	48	23.2%
K All Other Offences (excluding Motoring)	51	79.7%	13	20.3%
L Motoring Offences	608	91.0%	60	9.0%
Admin Finalisations	0	0.0%	22	100.0%
TOTAL	1,501	81.3%	346	18.7%